



# ONE Control

# Live

# Cheat Sheet

## ZONE A - MAIN LCD

Name	Modifiers	Function	Notes
<b>DISPLAY</b>	-	Main Liquid Crystal Display (LCD)	The main LCD is divided into eight columns, each with two lines of text. Each column displays information for the channel strip controls directly below it. In general, the upper row of each column displays the abbreviated track (or channel) name, and the lower row displays the abbreviated parameter name and its value.

## ZONE B - CHANNEL STRIP (1-8)

Name	Modifiers	Function	Notes
<b>V-Pot</b>	-		The v-pot controls track volume by default but can be flipped to control track panning.
<b>VU-Meter</b>	-	Shows the level of the channel output (in dB)	
<b>REC</b>	-	Arms the track for recording in exclusion of all other tracks	
	CONTROL	To arm the track nonexclusively	Note that a Misc Preference setting in Live allows deactivating exclusive track arming. When this setting is deactivated, the behavior of this knob with respect to exclusive and nonexclusive arming is reversed.
<b>MUTE</b>	-	Mutes/unmutes the track nonexclusively.	
<b>SOLO</b>	-	Listen the channel strip in isolation	Activates/deactivates soloing for the track in exclusion of all other tracks.
	CONTROL	To solo the track nonexclusively	Note that a Misc Preference setting in Live allows deactivating exclusive track soloing. When this setting is deactivated, the behavior of this knob with respect to exclusive and nonexclusive soloing is reversed.
<b>SIGNAL</b>	-	Shows the signal activity of the channel output	
<b>SELECT</b>	-	Selects the track, both in Live and on the Mackie Control, for various functions.	
<b>FADER</b>	-	Adjusts the channel level	When flip mode is enabled, the functionality of the V-Pots and faders is switched. This is the case in all available assignment modes.

## ZONE C - MASTER

Name	Modifiers	Function	Notes
<b>DISPLAY</b>	-	Assignment display	The Assignment display (also referred to as the mode display), to the right of the main LCD, shows a two-digit abbreviation for the current assignment state.
<b>I/O</b>	-	Switches the V-Pot and main display to I/O mode	This allows Live's track inputs and outputs to be set with the V-Pots: <ul style="list-style-type: none"> <li>Click once to select the track's Input Type chooser.</li> <li>Click twice to select the track's Input Channel chooser.</li> <li>Click three times to select the Output Type chooser.</li> <li>Click four times to select the Output Channel chooser.</li> </ul>
<b>SEND</b>	-	Switches the V-Pot to control the levels of all available Send controls for the currently selected track.	If more than eight sends are available, you can navigate through them using the previous and next buttons. If more than eight sends are available, you can navigate through them using the previous and next buttons.
<b>PAN</b>	-	Assigns the V-Pot and main display to the track's Pan control.	
<b>DEVICES</b>	-	Shows all available devices	Pressed once, this will bring up all available devices for the currently selected track in the main display. Using the page buttons, you can then scroll through the available devices and choose a particular device to edit by pressing the V-Pot. When you are done editing device settings, you can change the selected track or press the device assignment switch again to return to scrolling and selecting devices. When device settings are being changed, the name and settings of the selected device are shown in the main display. You can use the V-Pot to change parameter values as described in the introduction to this section.
<b>◀ PAGE</b>	-	Page Left	If, in any of the above assignment modes (especially with devices), more than one page of parameters is available, these buttons will scroll through the pages.
<b>PAGE ▶</b>	-	Page Right	If, in any of the above assignment modes (especially with devices), more than one page of parameters is available, these buttons will scroll through the pages.
<b>METER</b>	-	Switches the meters in the main display on/off.	Note that these meters appear only when pan assignment mode is active.
<b>RETURNS</b>	-	Shows and control the return tracks	By default, the channel strips display only those tracks in Live that contain clips. When return mode is enabled, the channel strip will show and control the return tracks. All assignments and modes will function otherwise identically.
<b>FLIP</b>	-	Switch between Faders and V-Pots	When flip mode is enabled (as shown by the illuminated LED above the button), the functionality of the V-Pots and faders is switched. This is the case in all available assignment modes.
<b>FADER</b>	-	Adjust Master volume	

## ZONE D - TIMECODE

Name	Modifiers	Function	Notes
<b>SMPTE/BEATS</b>	-	Toggles between displaying beats/bars and SMPTE in the time display	
<b>DISPLAY</b>	-	Time display	<p>The Time display, to the right of the Assignment display, shows the current playhead position, either in musical time divisions (BEATS) or in SMPTE timecode format (SMPTE). A small LED to the left of the display indicates the current display format.</p> <ul style="list-style-type: none"> <li>When the format is set to Beats, the four segments of the Time display show the current playhead position as bars, beats, beat subdivisions, and ticks.</li> <li>When the format is set to SMPTE, the four segments of the Time display show the current playhead position as hours, minutes, seconds, and frames.</li> </ul>
<b>RUDE SOLO</b>	-	Solo Led	The Solo LED (Rude Solo on the Mackie Control) is lit when a channel strip is set to solo or when Solo mode is turned on. It is a helpful reminder in situations where you have soloed a channel strip, then switched the fader bank, resulting in the Solo LED of the soloed channel strip being hidden on the control surface

## ZONE E - FUNCTIONS

Name	Modifiers	Function	Notes
<b>F1</b>	-		F-Keys These keys can be mapped freely to controls in Live. F1-F8
<b>F2</b>	-		
<b>F3</b>	-		
<b>F4</b>	-		
<b>F5</b>	-		
<b>F6</b>	-		
<b>F7</b>	-		
<b>F8</b>	-		

## ZONE F - FUNCTIONS

Name	Modifiers	Function	Notes
<b>F9</b>	-		F-Keys These keys can be mapped freely to controls in Live. F9-F16
<b>F10</b>	-		
<b>F11</b>	-		
<b>F12</b>	-		
<b>F13</b>	-		
<b>F14</b>	-		
<b>F15</b>	-		
<b>F16</b>	-		

## ZONE G - MODIFIERS

Name	Modifiers	Function	Notes
<b>SHIFT</b>	-		
<b>OPTION</b>	-		
<b>CONTROL</b>	-		
<b>ALT</b>	-		

## ZONE H - VIEW

Name	Modifiers	Function	Notes
<b>SE/ARR</b>	-	Switches between Session and Arrangement view	
<b>FOCUS</b>	SHIFT		When the Mackie Control's Shift key is held down, this sets the program focus to the Arrangement View or Session View, whichever is currently on screen.
<b>CLIP/FX</b>	-	Switch between Clip and FX panel	
<b>FOCUS</b>	SHIFT		When the Mackie Control's Shift key is held down, this sets the program focus to the Clip View or FX panel, whichever is currently on screen.
<b>UNDO</b>	-	Undo the last action	
<b>BROWSER</b>	-	Show/Hide the Browser panel	
<b>FOCUS</b>	SHIFT		When the Mackie Control's Shift key is held down, this sets the program focus to the Browser.
<b>DETAIL</b>	-	Show/Hide the Detail panel	
<b>FOCUS</b>	SHIFT		When the Mackie Control's Shift key is held down, this sets the program focus to the Clip View or Track View, whichever is currently on screen.
<b>REDO</b>	-	Redo the last action	

## ZONE I - FUNCTIONS

Name	Modifiers	Function	Notes
<b>BTA</b>		Stops clips in the Session View and returns to playing the Arrangement	Stops clips in the Session View from playing differently than how they were recorded into the Arrangement, and returns to playing the Arrangement.
<b>DRAW</b>		Switch between Draw and Select mode on clips	Enables/disables Draw Mode, for drawing notes and envelopes.
<b>MARKER</b>		Create a Marker at the cursor position	Deletes a locator when a locator is currently selected and the song is stopped. Otherwise, it creates a new locator at the current play position.
<b>FOLLOW</b>		Follow the current cursor position	Toggles Follow Mode, which scrolls Live's display to follow playback.



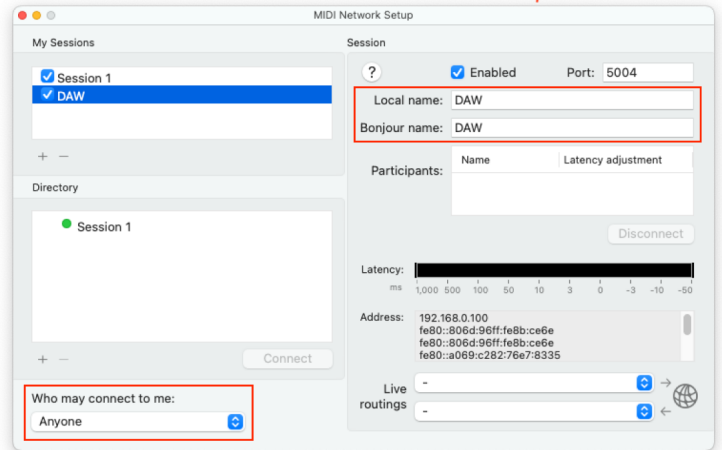
## ZONE J -TRANSPORT

Name	Modifiers	Function	Notes
◀ LOCATOR	-	Jump from the current project cursor position to the previous marker position in your project.	Using these buttons, you can skip forward or backward through the Arrangement from locator to locator. Note that the Arrangement start and end are also marked with invisible locators to which you can navigate using these buttons.
LOCATOR ▶	-	Jump from the current project cursor position to the next marker position in your project.	Using these buttons, you can skip forward or backward through the Arrangement from locator to locator. Note that the Arrangement start and end are also marked with invisible locators to which you can navigate using these buttons.
LOOP	-	Loop On/Off Toggles the Arrangement Loop switch on/off.	
PI	-	Punch-In	Toggles Live's Punch-In switch on/off.
PO	-	Punch-Out	Toggles Live's Punch-Out switch on/off.
HOME	-	Jumps to the Arrangement start	
END	-	Jumps to the Arrangement end	
REWIND	-	Shuttle rewind	When pressed once, this will move the play position one beat backward. When held down, the button move backward in increments of one bar during Arrangement playback, one beat if the Arrangement is stopped.
	ALT	One-beat increments backward	Holding down the Mackie Control's Alt button when the Arrangement is playing will also move in one-beat increments forward/backward.
FFWD	-	Shuttle forward	When pressed once, this will move the play position one beat forward. When held down, the button move forward in increments of one bar during Arrangement playback, one beat if the Arrangement is stopped.
	ALT	One-beat increments forward	Holding down the Mackie Control's Alt button when the Arrangement is playing will also move in one-beat increments forward/backward.
STOP	-	Stops Arrangement playback.	
PLAY	-	Plays the Arrangement from the song start or insert marker.	
RECORD	-	Toggles the Record button on/off.	
◀ BANK ▶	-	The BANK + and - buttons page the channel strips in increments of eight (or more, if a fader extension is installed) to the right or left, respectively.	If more than eight tracks are being used in Live, these buttons can be used to page through the additional tracks and set them to the Mackie Control's eight channel strips.
◀ PAGE ▶	SHIFT	Go to the first/last page	To go to the first/last page, hold down the Mackie Control's Shift button while pressing these.
◀ CHANNEL ▶	-	You can use the channel + and - buttons to scroll through the additional tracks singly, setting them to the Mackie Control's eight channel strips.	
◀ TRACK ▶	SHIFT	Go to the first/last track	To go to the first/last track, hold down the Mackie Control's Shift button while pressing these.
ARROWS	-		In the Session View: • the arrows navigate through the Session View grid. When zoom is not enabled, the arrow buttons can be used to select tracks.
	ZOOM		In the Arrangement View: • Use the arrow buttons for zooming and scrolling in the currently selected track.
	OPTION+ ZOOM+ ALT		To stop playing the selected clip, hold down the Mackie Control's Options button while pressing zoom, and use the Alt button to add/remove the selected slot's Clip Stop button.
ZOOM	-	Switch between default cursor button behavior and Zoom mode	Pressing the zoom button will fire the currently selected clip, or stop another playing clip in the same track if the currently selected slot is empty.
JOG WHEEL	-		In the Session View: • the jog wheel scrolls through the scenes. In the Arrangement View: • the jog wheel moves the play position.
	OPTION	Change global quantization	
	ALT	Smaller increments	You can also use the Mackie Control's Alt button in the Arrangement View to move the play position in smaller increments.
SCRUB	-	Activates the currently scene	This fires the currently selected scene in the Session View and has no effect in the Arrangement View.
STOP ALL	OPTION		To stop all running clips, hold down the Mackie Control's Options button while pressing this.

# Setup

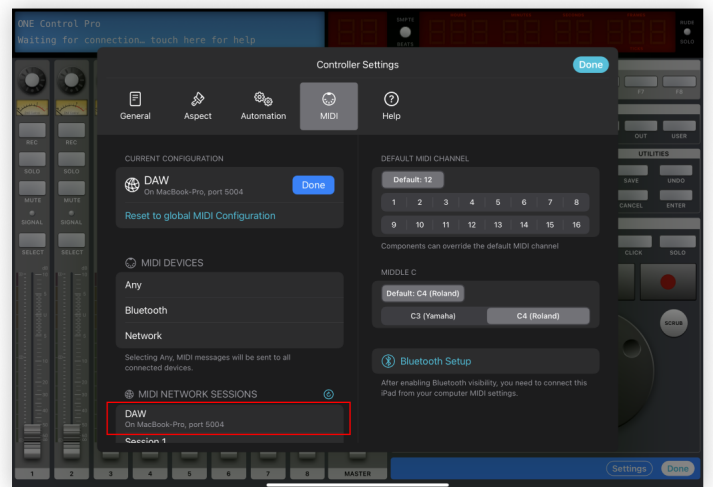
## Create a dedicated MIDI Network Session

1. On your Mac open Audio MIDI Setup app
2. Open MIDI Network Setup window from MIDI Studio Menu
3. Create a new Session and call it "DAW"  
(Fill in both the Local Name and Bonjour Name)
4. Double check that the newly created session is Enabled (Checkbox ticked)
5. Double check that "Who may connect to me" is set to Anyone



## Configure your controller

1. On ONE Control add a new Live controller
2. Inside the controller tap Edit
3. Tap Settings
4. Select the MIDI Setup panel
5. Tap Edit to configure your MIDI connection
6. In the MIDI Network Sessions list, select DAW
7. Close the controller's settings dialog
8. Tap Done to exit controller's editing Mode



## Configure Ableton Live

1. Open Ableton Live
2. Open Preferences, MIDI
3. Add a MackieControl Control Surface and select DAW (Network session) as Input and Output
4. Under the MIDI Port Section, Select 'Track' and 'Remote' for In
5. Select 'Sync' and 'Remote' for Out
6. Exit preferences

