



ONE Control



Adobe Audition

Cheat Sheet

ONE Control+
Version 1.5.0

A

1

2

3

4

5

6

7

8

REC

SOLO

MUTE

SIGNAL

SELECT

dB

10

5

0

-5

-10

-15

-20

-25

-30

-35

-40

-45

-50

-55

-60

-65

-70

-75

-80

-85

-90

-95

-100

ASSIGN

TRACK

PAN

EQ

NAME/VAL

GLOBAL

C

MASTER

SMPT

HOURS

MINUTES

SECONDS

FRAMES

BEATS

BAR

BEATS

SUB DIVISION

TICKS

RUDE

SOLO

D

FUNCTIONS

F1

F2

F3

F4

F5

F6

F7

F8

GLOBAL VIEW

MIDI

INPUTS

AUDIO

INSTR

AUX

BUS

OUT

USER

MODIFIERS

SHIFT

OPTION

CONTROL

CMD/ALT

G

AUTOMATION

READ/OFF

WRITE

TOUCH

LATCH

REDO

H

UTILITIES

SAVE

CANCEL

UNDO

MIXER

I

TRANSPORT

ADD MARKER

NUDGE

LOOP

MARK IN

MARK OUT

GOTO IN

GOTO OUT

←

→

□

▶

●

BANK

CHANNEL

↑

↓

←

→

Q

⌂

Au

J

Audition

i

⌘

?

!

Edit

×

ZONE A - MAIN LCD

Name	Modifiers	Function	Notes
DISPLAY	-	Main Liquid Crystal Display (LCD)	The main LCD is divided into eight columns, each with two lines of text. Each column displays information for the channel strip controls directly below it. In general, the upper row of each column displays the abbreviated track (or channel) name, and the lower row displays the abbreviated parameter name and its value.

ZONE B - CHANNEL STRIP (1-8)

Name	Modifiers	Function	Notes
V-Pot	-	Use the Pan and Balance knob to control pan and balance for each track in your sequence.	
VU-Meter	-	Track meters for mono, stereo, 5.1 tracks.	
REC	-	The Rec/Ready button on Mackie devices or the Auto Rec button on EUCON enables recording for the corresponding track in your sequence.	
MUTE	-	Mutes the corresponding track in your sequence.	
SOLO	-	Solo the corresponding track in your sequence.	
SIGNAL	-	Shows the signal activity of the corresponding channel.	
SELECT	-	Select the corresponding channel	
FADER	-	Adjust channel volume	

ZONE C - MASTER

Name	Modifiers	Function	Notes
DISPLAY	-	Assignment Display	
TRACK	-	Show Track names in the display	
PAN	-	Show Track balances in the display	
EQ	-	Show EQ Mode	Once active, use the V-Pots to select and adjust Eq Bands. (On/Off, width, frequency, and gain). <ul style="list-style-type: none"> • Press to cycle through all frequency bands and their corresponding settings. • Rotate to adjust current selected setting.
SEND	-	Currently unassigned	
PLUG-IN	-	Currently unassigned	
INSTR.	-	Currently unassigned	
NAME/VAL	-	Switch through track names and values in the Display	
GLOBAL	-	Activate audio clip mixer	
FLIP	-	Currently unassigned	
FADER	-	Adjust Master Volume	

ZONE D - TIMECODE

Name	Modifiers	Function	Notes
SMPTE/BEATS	-	Currently unassigned	
DISPLAY	-	Time display	
RUDE SOLO	-	Currently unassigned	

ZONE E - FUNCTIONS

Name	Modifiers	Function	Notes
F1	-	Currently unassigned	
F2	-	Currently unassigned	
F3	-	Currently unassigned	
F4	-	Currently unassigned	
F5	-	Currently unassigned	
F6	-	Currently unassigned	
F7	-	Currently unassigned	
F8	-	Currently unassigned	

ZONE F - GLOBAL VIEW

Name	Modifiers	Function	Notes
MIDI	-	Currently unassigned	
INPUTS	-	Currently unassigned	
AUDIO	-	Currently unassigned	
INSTR.	-	Currently unassigned	
AUX	-	Currently unassigned	
BUS	-	Currently unassigned	
OUT	-	Currently unassigned	
USER	-	Currently unassigned	

ZONE G - MODIFIERS

Name	Modifiers	Function	Notes
SHIFT	-	Currently unassigned	
OPTION	-	Currently unassigned	
CONTROL	-	Currently unassigned	
CMD/ALT	-	Currently unassigned	

ZONE H - AUTOMATION

Name	Modifiers	Function	Notes
READ/OFF	-	Toggle between Off , Read , Latch , Touch , and Write states for each track in your sequence.	
WRITE	-	Toggle between Off , Read , Latch , Touch , and Write states for each track in your sequence.	
UNDO	-	Undo the last action	
TOUCH	-	Toggle between Off , Read , Latch , Touch , and Write states for each track in your sequence.	
LATCH	-	Toggle between Off , Read , Latch , Touch , and Write states for each track in your sequence.	
REDO	-	Redo the last action	

ZONE I - UTILITIES

Name	Modifiers	Function	Notes
SAVE	-	Currently unassigned	
UNDO	-	Currently unassigned	
CANCEL	-	Currently unassigned	
MIXER	-	Show Audio Track Mixer	

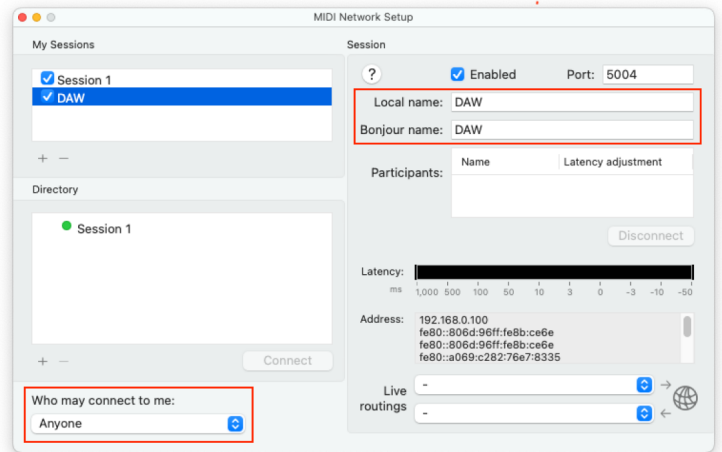
ZONE J -TRANSPORT

Name	Modifiers	Function	Notes
MARKER	-	Currently unassigned	
NUDGE	-	Currently unassigned	
LOOP	-	Activate/deactivate Cycle mode	
MARK IN	-	Set Mark in location	
MARK OUT	-	Set Mark out location	
GOTO IN	-	Go to Mark in location	
GOTO OUT	-	Go to Mark out location	
REWIND	-	Shuttle rewind	Tap more than once to gradually increase speed
F.FWD	-	Shuttle forward	Tap more than once to gradually increase speed
STOP	-	Stop playback	
PLAY	-	Play/Pause Timeline	
RECORD	-	Set Global Record On/Off	
◀ BANK ▶	-	Shift fader bank LEFT/RIGHT by number of channel strips	
LEFT/RIGHT	OPTION	To jump to the first set of channel strips in the project.	
◀ CHANNEL ▶	-	Shift fader bank LEFT/RIGHT by one channel	
LEFT/RIGHT	OPTION	To jump to the first set of channel strips in the project.	
CURSOR ← →	-	Cursor Keys navigate the arrangement (depending on current window focus).	
CURSOR ↑ ↓	-	Cursor Keys navigate the arrangement (depending on current window focus).	
ZOOM	-	Enable/disable Zoom mode	
JOG WHEEL	-	Jumps to the nearest bar in the Arrangement	
SCRUB	-	Enable Scrub mode	Use the Jog wheel to move forward or backward at various speeds during media playback.

Setup

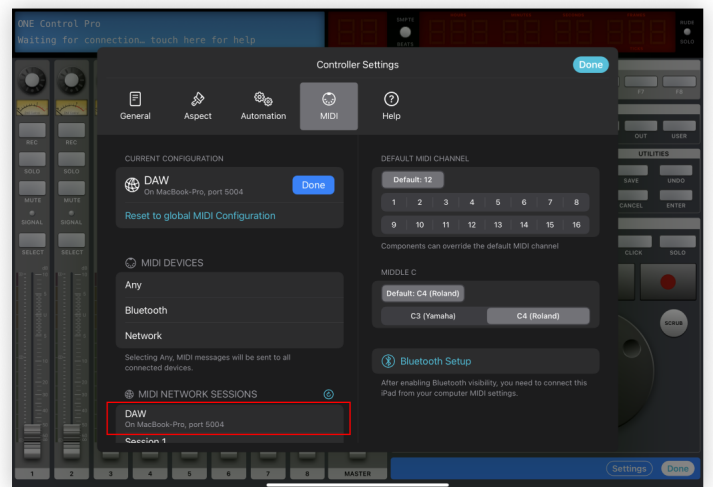
Create a dedicated MIDI Network Session

1. On your Mac open Audio MIDI Setup app
2. Open MIDI Network Setup window from MIDI Studio Menu
3. Create a new Session and call it "DAW"
(Fill in both the Local Name and Bonjour Name)
4. Double check that the newly created session is Enabled (Checkbox ticked)
5. Double check that "Who may connect to me" is set to Anyone



Configure your controller

1. On ONE Control add a new Adobe Audition controller
2. Inside the controller tap Edit
3. Tap Settings
4. Select the MIDI Setup panel
5. Tap Edit to configure your MIDI connection
6. In the MIDI Network Sessions list, select DAW
7. Close the controller's settings dialog
8. Tap Done to exit controller's editing Mode



Configure Adobe Audition

1. Open Adobe Audition
2. Go to Preferences > Control Surface...
3. 'Add' a new Control Surface
4. Choose 'Mackie' as your Device Class
5. Press 'Settings' in 'Configure Mackie Control' and choose both MIDI Input and Output Device, as 'Session 1 or DAW'.
6. Press 'Ok' for both 'Configure Mackie Control' windows.
7. In the 'Add Control Surface' you can edit 'Button assignments...'
8. Press 'Ok'
9. You will find 'Mackie' under 'Device Class'
10. Press 'Ok' to exit settings

