



ONE Control



Bitwig Studio

Cheat Sheet

ONE Control+
Version 1.3.3

REC

SOLO

MUTE

SIGNAL

SELECT

dB

1

REC

SOLO

MUTE

SIGNAL

SELECT

dB

2

REC

SOLO

MUTE

SIGNAL

SELECT

dB

3

REC

SOLO

MUTE

SIGNAL

SELECT

dB

4

REC

SOLO

MUTE

SIGNAL

SELECT

dB

5

REC

SOLO

MUTE

SIGNAL

SELECT

dB

6

REC

SOLO

MUTE

SIGNAL

SELECT

dB

7

REC

SOLO

MUTE

SIGNAL

SELECT

dB

8

ASSIGN

TRACK

PAN

PREV

SEND

PLUG-IN

NEXT

NAME/VAL

GLOBAL

FLIP

C

MASTER

SMPT

BEATS

HOURS

MINUTES

SECONDS

FRAMES

RUDE

SOLO

E

F

G

H

I

J

TRANSPORT

MARKER

NUDGE

CYCLE

DROP

REPLACE

CLICK

SOLO

BANK

CHANNEL

SCRUB

Bitwig | Edit

ZONE A - MAIN LCD

Name	Modifiers	Function	Notes
DISPLAY	-		

ZONE B - CHANNEL STRIP (1-8)

Name	Modifiers	Function	Notes
V-Pot	-		
VU-Meter	-		
REC	-		
MUTE	-		
SOLO	-		
SIGNAL	-		
SELECT	-	Select Track. [State 1: Track Exists]	Select Track. [State 2: No track on column of SELECT button.]
	SHIFT	Fold/Unfold Track (only Group Tacks).	State 2: Create Audio Track.
	ALT	Stop Clips on Track.	State 2: Create Effect Track.
	OPTION	Navigate Into Group track (only Group Tracks) revert with F3.*	
	CONTROL	Delete Track.	
FADER	-		

ZONE C - MASTER

Name	Modifiers	Function	Notes
DISPLAY	-	Shows the track number of the channel #1	
TRACK	-		
PAN	-	Control Bitwig Studio's panning	
EQ	-	Navigates to Bitwig Studio's EQ+. When no EQ+ is in the device chain, pressing the button again will add a new EQ+ at the end of the device chain.	Press and hold Plugin to get additional options: <ul style="list-style-type: none"> • Active: Activate or bypass device. • Pin: Pins the device. • Move: Move the device left or right. • Remove: Remove a device. • Add: Add a device left or right from the currently selected device and open the browser. • Browse: Replace the currently selected device or load a preset.
PRVIEW	SHIFT	Enable Preview in the browser.	While browsing is active, press and hold shift to: PRVIEW
Cont.T	SHIFT	Switch the Content Type between devices or presets.	While browsing is active, press and hold shift to: Cont.T
SEND	-	Control Bitwig Studio's send levels. By default 1 send for multiple tracks is Controlled by the V-Pots. The up and down buttons are switching the to the previous or next send. Pressing the Name/ Value button temporarily shows the send name. Pressing the Track button controls all the sends of the selected track.	
PLUG-IN	-	Control Bitwig Studio's effects Plug-Ins	Press and hold Plugin to get additional options: <ul style="list-style-type: none"> • Active: Activate or bypass device. • Pin: Pins the device. • Move: Move the device left or right. • Remove: Remove a device. • Add: Add a device left or right from the currently selected device and open the browser. • Browse: Replace the currently selected device or load a preset.
PRVIEW	SHIFT	Enable Preview in the browser.	While browsing is active, press and hold shift to: PRVIEW
Cont.T	SHIFT	Switch the Content Type between devices or presets.	While browsing is active, press and hold shift to: Cont.T
INSTR.	-	Navigates to the Instrument of an Instrument Track	Press and hold Plugin to get additional options: <ul style="list-style-type: none"> • Active: Activate or bypass device. • Pin: Pins the device. • Move: Move the device left or right. • Remove: Remove a device. • Add: Add a device left or right from the currently selected device and open the browser. • Browse: Replace the currently selected device or load a preset.
PRVIEW	SHIFT	Enable Preview in the browser.	While browsing is active, press and hold shift to: PRVIEW
Cont.T	SHIFT	Switch the Content Type between devices or presets.	While browsing is active, press and hold shift to: Cont.T
NAME/VAL	-		
	SHIFT	Activate level meters.	1x: Vertical 2x: Horizontal 3x: Off
GLOBAL	-		
	ShowSends	Defines whether the Effect Tracks (Send returns) are accessible from the controller	
	Channel Mute	The Mute buttons indicate whether a Drum Machine device is in one of the selected tracks. If present pressing the Mute button enters Drum Machine mix mode. In this mode the Rec buttons trigger the respective sounds. Press Global View again to return to the normal mode.	
	Channel Select	The Select buttons indicate group tracks. Pressing it will fold or unfold a group. While in normal mode a ">" sign in front of the track name will indicate a folded group and "*" an unfolded group.	
FLIP	-	Flips the function of the V-Pots and the faders	
FADER	-		

ZONE D - TIMECODE

Name	Modifiers	Function	Notes
SMPTE/BEATS	-	Switches between SMPTE and Beats mode.	
DISPLAY	-		
RUDE SOLO	-		

ZONE E - FUNCTIONS

Name	Modifiers	Function	Notes
F1	-	Transport return to Arrangement.	While Cue Marker mode is active: Trigger a Cue Marker.
F2	-	Toggle between Clip Launcher and Arrangement View.	While Cue Marker mode is active: Trigger a Cue Marker.
F3	-	Navigate out of Group track.*	While Cue Marker mode is active: Trigger a Cue Marker.
F4	-		While Cue Marker mode is active: Trigger a Cue Marker.
F5	-		While Cue Marker mode is active: Trigger a Cue Marker.
F6	-		While Cue Marker mode is active: Trigger a Cue Marker.
F7	-		While Cue Marker mode is active: Trigger a Cue Marker.
F8	-		While Cue Marker mode is active: Trigger a Cue Marker.

ZONE F - GLOBAL VIEW

Name	Modifiers	Function	Notes
MIDI	-	INSTRUMENT filtered by MIDI FX device.	
INPUTS	-		
AUDIO	-		
INSTR.	-		
AUX	-		
BUS	-		
OUT	-		
USER	-		

ZONE G - MODIFIERS

Name	Modifiers	Function	Notes
SHIFT	-		
OPTION	-		
CONTROL	-		
CMD/ALT	-		

ZONE H - AUTOMATION

Name	Modifiers	Function	Notes
READ/OFF	-		
WRITE	-		
TRIM	-		
TOUCH	-		
LATCH	-		
GROUP	-	Enter Clip Launching mode.	In this mode the track buttons allows to launch clips in a 8x4 matrix. Press and hold Shift to see additional options.
	SHIFT	+Opt+Track button: Delete a clip.	
	SHIFT	+Alt+Track button: Double the contents of a clip.	
	OPTION	+Track button: Duplicate a clip.	
	ALT	+Track button: Stop a clip.	

ZONE I - UTILITIES

Name	Modifiers	Function	Notes
SAVE	-		
UNDO	-	Undo. LED indicates Undo availability.	
CANCEL	-	Redo.	
ENTER	-		

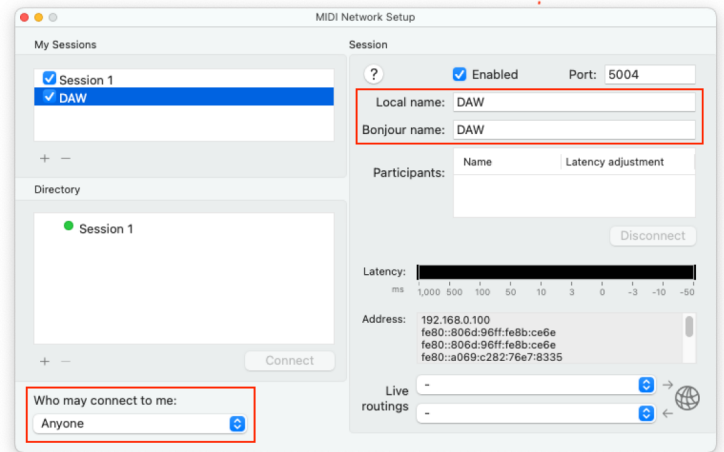
ZONE J -TRANSPORT

Name	Modifiers	Function	Notes
MARKER	-	Press Marker to activate the Cue Marker mode.	Press and hold the Marker button and press a V-Pot to create a new Cue Marker. • Turn the V-Pot to adjust the position of an existing Cue Marker. • While Cue Marker mode is active the F1-F8 buttons can be used to trigger a Cue Marker. • You may rename Cue Markers in the software.
	SHIFT	+Pressing a V-Pot deletes the marker.	
NUDGE	-		
CYCLE	-	Press cycle to enable Bitwig Studio's Transport Loop.	Press and hold to see additional options.
		Cycle:	Transport loop on/off
		Start:	Start point of the transport loop.
		Len:	Length of the transport loop.
		P.In/P.Out:	Punch in or out at the loop region borders.
DROP	-		
REPLACE	-		
CLICK	-	Press Click to enable the metronome.	Press and hold to see additional options.
		Metro:	Activate the Metronome.
		P.Roll:	Activate Preroll.
		M.Tick:	Activate the "Play Ticks" option.
		M.Vol:	Adjust the Metronome volume.
		T.Click:	Activate clicks for the transport section buttons.
SOLO	-		
REWIND	-		
F.FWD	-		
STOP	-		
PLAY	-		
RECORD	-		
◀ BANK ▶	-	Navigates Bitwig Studio's channels in groups of 8	
◀ CHANNEL ▶	-	Navigates Bitwig Studio's channels by 1	
CURSOR ← →	-	Navigates to the previous/next parameter page.	
CURSOR ↑ ↓	-	Navigates to the previous/next device.	
	Shift+Up	Navigate to parent device if device is nested.	
	Shift+Down	Navigate to the nested device.	
ZOOM	-	While active, up/down will change the track size. Left/right affects the zoom level of the arranger.	
JOG WHEEL	-		
SCRUB	-		

Setup

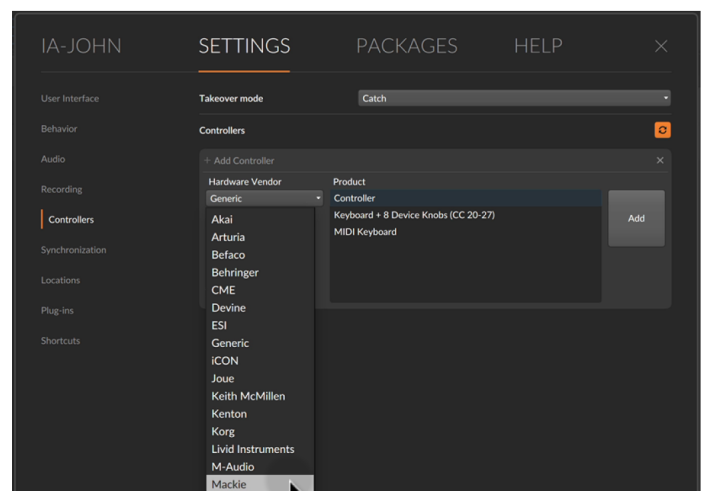
Create a dedicated MIDI Network Session

1. On your Mac open Audio MIDI Setup app
2. Open MIDI Network Setup window from MIDI Studio Menu
3. Create a new Session and call it "DAW"
(Fill in both the Local Name and Bonjour Name)
4. Double check that the newly created session is Enabled (Checkbox ticked)
5. Double check that "Who may connect to me" is set to Anyone



Configure your controller

1. On ONE Control add a new Bitwig controller
2. Inside the controller tap Edit
3. Tap Settings
4. Select the MIDI Setup panel
5. Tap Edit to configure your MIDI connection
6. In the MIDI Network Sessions list, select DAW
7. Close the controller's settings dialog
8. Tap Done to exit controller's editing Mode



Configure Bitwig

1. Open Bitwig Studio
2. Go to Preferences, Settings, Controllers
3. Press 'Add Controller'
4. Choose 'Mackie' under Hardware Vendor
5. Choose 'Mackie Control', by Bitwig and tap on 'Add'
6. Choose 'Network DAW' as session input and output
7. Make sure the session is on and you are good to go

