



ONE Control



Bitwig Studio

# Cheat Sheet

ONE Control+  
Version 1.3.3

REC

SOLO

MUTE

SIGNAL

SELECT

dB

1

REC

SOLO

MUTE

SIGNAL

SELECT

dB

2

REC

SOLO

MUTE

SIGNAL

SELECT

dB

3

REC

SOLO

MUTE

SIGNAL

SELECT

dB

4

REC

SOLO

MUTE

SIGNAL

SELECT

dB

5

REC

SOLO

MUTE

SIGNAL

SELECT

dB

6

REC

SOLO

MUTE

SIGNAL

SELECT

dB

7

REC

SOLO

MUTE

SIGNAL

SELECT

dB

8

ASSIGN

TRACK SEND

PAN PLUG-IN

PREV NEXT

NAME/VAL

GLOBAL

FLIP

C

MASTER

SMPT

HOURS

MINUTES

SECONDS

FRAMES

BEATS

RUDE

SOLO

FUNCTIONS

F1 F2 F3 F4 F5 F6 F7 F8

GLOBAL VIEW

EDITOR AUTOMAT. DEVICE MIXER AUX BUS OUT BROWSER

MODIFIERS

SHIFT OPTION

CONTROL CMD/ALT

AUTOMATION

READ/OFF

TOUCH

LATCH

GROUP

UTILITIES

SAVE

CANCEL

UNDO

ENTER

TRANSPORT

MARKER NUDGE CYCLE DROP REPLACE CLICK SOLO

MARKER

CHUNK

CHANNEL

UP

DOWN

LEFT

RIGHT

SCRUB

J

Bitwig | ⓘ ? ! Edit ✕

## ZONE A - MAIN LCD Snapshot

Name	Modifier	Function	Notes
DISPLAY	-	Main Liquid Crystal Display (LCD)	Toggles the display of the track names in the 1st display.

## ZONE B - CHANNEL STRIP (1-8) Snapshot

Name	Modifier	Function	Notes
V-Pot	-	<p>Press knob: Resets the current parameter to its default value. It can be combined with modifier keys: SHIFT - set parameter to centre value, CONTROL - set parameter to minimum, ALT - set parameter to maximum.</p> <p>In <b>Track</b> edit mode: Press Track to enter; Change the volume, panorama, crossfader and Send 1-5 of the selected track. Hold <b>Shift</b> for fine adjustments.</p> <p>In <b>Volume</b> edit mode: Press Track twice to enter; Change the volume of that channel. Hold shift for fine adjustments.</p> <p>In <b>Panorama</b> edit mode: Press Pan to enter. Change the panorama of that channel. Hold shift for fine adjustments.</p> <p>In <b>Send</b> edit mode: Press Send to enter. Press multiple times to select the Send channels 1 to 8. Use in combination with the <b>Track select</b> buttons to select the respective Send channel 1-8.</p> <p><b>8 knobs</b> - Change the volume of send of that channel. Hold <b>Shift</b> for fine adjustments.</p> <p>In <b>User Parameter</b> edit mode: Change the currently selected 8 user parameters.</p> <p>In <b>Device</b> edit mode (dC): Change the currently selected 8 device parameters</p>	You can configure in the preferences that the crossfader option is hidden and you get 6 sends instead.
	OPTION	Set parameter to minimum, default, or maximum value	
	CMD/ALT	Modify parameter at high resolution	
	SHIFT	Set parameter to centre value	Combined with pressing the V-Pot
	CONTROL	Set parameter to minimum	Combined with pressing the V-Pot
	ALT	Set parameter to maximum	Combined with pressing the V-Pot
VU-Meter	-	Shows the level of the channel output (in dB)	
REC	-	Press to arm/disarm the specific track for recording.	
MUTE	-	Activate/deactivate Mute button of track/layer's channel strip.	
	SHIFT	Toggle monitor	
ALL	OPTION	Deactivate all mutes	
SOLO	-	Activate/deactivate Solo button of track/layer's channel strip.	
	SHIFT	Toggle auto monitor	
ALL	OPTION	Deactivate all solos	
SIGNAL	-	Shows the signal activity of the channel output	
SELECT	-	Select the specific track.	If <i>hierarchical</i> is selected as track navigation in the settings, press the select button of the track again to enter a group/folder. Long press the select button of any track to leave the group/folder. If track navigation is set to <i>flat</i> , selecting an already selected group track toggles its' expanded state. Press the select button of the track again to enter layers mode, if the track contains an instrument with layers or drum pads.
	SHIFT	Multi-select tracks (if supported by DAW).	In Display mode: Select the length for new clips: 16 bars, 8 bars, 4 bars, 2 bars, 1 bar, 2 beats, 1 beat, 32 bars.
	OPTION	Stop the playing clip on the specific track.	
	CONTROL	Open/close the group folder if the track is a group.	
	ALT	Set the length of a new clip.	
	SEND	Select the send channel 1-8.	
		Layers and drum pads can be edited (Volume, Pan, Sends, Mute, Solo). Press Select on the already selected track containing the instrument with the layers/drum pads on the top level to enter. Use Mode buttons to select the different layer modes. Long press any of the Select buttons to leave layers mode.	
FADER	-	Change volume of selected 8 tracks.	Touching a fader automatically selects the track.

## ZONE C - MASTER Snapshot

Name	Modifier	Function	Notes
<b>DISPLAY</b>	-	Toggles the display of the track names in the 1st display.	
	TEMPO/TICKS	Toggle content of segment display. The last 3 digits toggle between ticks or the song tempo.	
	GLOBAL VIEW	Toggle VU meters On/Off	
<b>TRACK</b>	-	Select the Track edit mode. Press again to select the Volume edit mode.	
	MCU select 1-8	Select the specific track. If <i>hierarchical</i> is selected as track navigation in the settings, press the select button of the track again to enter a group/folder. Long press the select button of any track to leave the group/folder. If track navigation is set to <i>flat</i> , selecting an already selected group track toggles its' expanded state. Press the select button of the track again to enter layers mode, if the track contains an instrument with layers or drum pads.	
	OPTION	Pin Cursor Track	
MCU select 1-8	SHIFT	Multi-select tracks (if supported by DAW).	
MCU select 1-8	OPTION	Stop the playing clip on the specific track.	
MCU select 1-8	CONTROL	Open/close the group folder if the track is a group.	
MCU select 1-8	ALT	Set the length of a new clip.	
<b>PAN</b>	-	Select the Panorama edit mode.	See the section <b>Edit Modes</b> below.
<b>EQ</b>	-	Select the equalizer device edit mode.	Eq edit mode: Works like the Device edit mode but for the equalizer device on the track (Bitwig: EQ+, Reaper: ReaEQ). When the EQ mode is active and a track is selected which does not yet have an equalizer device, one is automatically added.
<b>SEND</b>	-	Select the Send edit mode.	Press multiple times to select the Send channels 1 to 8. See the section <b>Edit Modes</b> below. Use in combination with the <b>Track select</b> buttons to select the respective Send channel 1-8. Use <b>Shift+Send</b> to move backwards.
	SHIFT	Move backwards	
<b>PLUG-IN</b>	-	Plug-in selection or Plug-in Edit mode	Press again to select User mode. See the section <b>Edit Modes</b> below.
	OPTION	Pin cursor to device	
<b>INSTR.</b>	-	Select the instrument device edit mode.	
<b>NAME/VAL</b>	-		
<b>GLOBAL</b>	-	Toggle VU meters On/Off	
<b>FLIP</b>	-	Toggles Use faders like knobs option.	
	SHIFT	Toggles between Instrument/Audio/Hybrid tracks and the Effect tracks.	
<b>FADER</b>		Change volume of master fader.	Touching the fader selects the master track.
	SHIFT	Changes metronome volume	
	1st Knob	In Master edit mode: Touch master fader to enter; Change the master volume. Press to reset.	
	2nd Knob	In Master edit mode: Touch master fader to enter; Change the master panorama. Press to reset	
	Knob 3-5	In Master edit mode: Touch master fader to enter; Press to toggle the audio engine on/off for this project.	
	7th Knob	In Master edit mode: Touch master fader to enter; Press to switch to the previous project.	
	8th Knob	In Master edit mode: Touch master fader to enter; Press to switch to the next project.	

## ZONE D - TIMECODE Snapshot

Name	Modifiers	Function	Notes
<b>SMPTE/BEATS</b>	-	Switch between SMPTE and beat format in clock display	You can also set the default format with the Clock Display parameter in the Control Surfaces Setup window. See the Logic Pro User Guide.
<b>DISPLAY</b>	-	Time display	<p>The Time display, to the right of the Assignment display, shows the current playhead position, either in musical time divisions (BEATS) or in SMPTE timecode format (SMPTE). A small LED to the left of the display indicates the current display format.</p> <ul style="list-style-type: none"> <li>When the format is set to Beats, the four segments of the Time display show the current playhead position as bars, beats, beat subdivisions, and ticks.</li> <li>When the format is set to SMPTE, the four segments of the Time display show the current playhead position as hours, minutes, seconds, and frames.</li> </ul>
<b>RUDE SOLO</b>	-	Solo Led	The Solo LED (Rude Solo on the Mackie Control) is lit when a channel strip is set to solo or when Solo mode is turned on. It is a helpful reminder in situations where you have soloed a channel strip, then switched the fader bank, resulting in the Solo LED of the soloed channel strip being hidden on the control surface

## ZONE E - FUNCTIONS Snapshot

Name	Modifier	Function	Notes
<b>F1</b>	-	Select a function to execute when the respective function key is pressed	Functions for these buttons can be assigned in the settings dialog.
<b>F2</b>	-	Select a function to execute when the respective function key is pressed	Functions for these buttons can be assigned in the settings dialog.
<b>F3</b>	-	Select a function to execute when the respective function key is pressed	Functions for these buttons can be assigned in the settings dialog.
<b>F4</b>	-	Select a function to execute when the respective function key is pressed	Functions for these buttons can be assigned in the settings dialog.
<b>F5</b>	-	Select a function to execute when the respective function key is pressed	Functions for these buttons can be assigned in the settings dialog.
<b>F6</b>	-		
<b>F7</b>	-		
<b>F8</b>	-	Device On/Off	Toggle device on/off



## ZONE F - GLOBAL VIEW

Name	Modifier	Function	Notes
EDITOR	-	Toggles the display of the note editor pane	
AUTOMAT.	-	Toggles the display of the automation editor pane	
DEVICE	-	Toggles the display of a plugin window	
	SHIFT	Toggles the different layouts	
	OPTION	Toggles the devices' expanded state	
MIXER	-	Toggles the display of the mixer pane	
AUX	-	Switch to All view and show aux channel strips	Switches to Arrange Layout
BUS	-	Switch to All view and show bus channel strips	Switches to mix layout
OUT	-	Switch to All view and show output and master channel strips	Switches to Edit layout
BROWSER	-	Starts the browser to browse for presets	Browser mode: • Press the <i>Browser</i> button (MCU USER) to start. • Navigate columns with the <i>Track Control knobs</i> . • Click the knobs to enter a filter or the results. Click again to confirm. • To confirm a patch or device selection and close the Browser press the <i>Browser</i> or <i>Enter</i> button. • To discard the patch selection press the <i>Cancel</i> button or <i>Shift+Browser</i> . • <b>Arrow up:</b> Switches to the previous browser tab (if any). • <b>Arrow down:</b> Switches to the next browser tab (if any). • <b>Arrow left:</b> Switch to insert a device before the currently selected device (if any). • <b>Arrow right:</b> Switch to insert a device after the currently selected device (if any). • <b>Zoom:</b> Switch to replace the currently selected device (if any). • <b>Jog Wheel</b> - Scroll the results.
	SHIFT	Starts the browser to insert a new device before the current one	
	OPTION	Starts the browser to insert a new device after the current one	

## ZONE G - MODIFIERS Snapshot

Name	Modifier	Function	Notes
SHIFT	-	Use in combination with other buttons for additional functions.	
OPTION	-	Use in combination with other buttons for additional functions.	
CONTROL	-	Disable Group functions while held down	
CMD/ALT	-	Enable Fine mode; shift parameter page by one parameter instead of page	

## ZONE H - AUTOMATION Snapshot

Name	Modifier	Function	Notes
READ/OFF	-	Disables arranger automation recording.	
	OPTION	Resets any automation overrides.	
WRITE	-	Enables arranger automation recording and sets it to Write mode.	
TRIM	-	Enables arranger automation recording and sets it to Trim mode. Since Bitwig has not Trim mode, it enables the Read mode.	
TOUCH	-	Enables arranger automation recording and sets it to Touch mode.	
LATCH	-	Enables arranger automation recording and sets it to Latch mode.	
GROUP	-	Enables arranger automation recording and sets it to Write mode.	

## ZONE I - UTILITIES Snapshot

Name	Modifier	Function	Notes
<b>SAVE</b>	-	Save button saves the current project	
<b>UNDO</b>		Undos the last action	
	SHIFT	Redos the last action	
<b>CANCEL</b>	-	Cancels browsing when the Browser is active, otherwise like pressing the Escape key on the computer keyboard.	
<b>ENTER</b>	-	Confirms browsing when the Browser is active, otherwise like pressing the Enter key on the computer keyboard.	

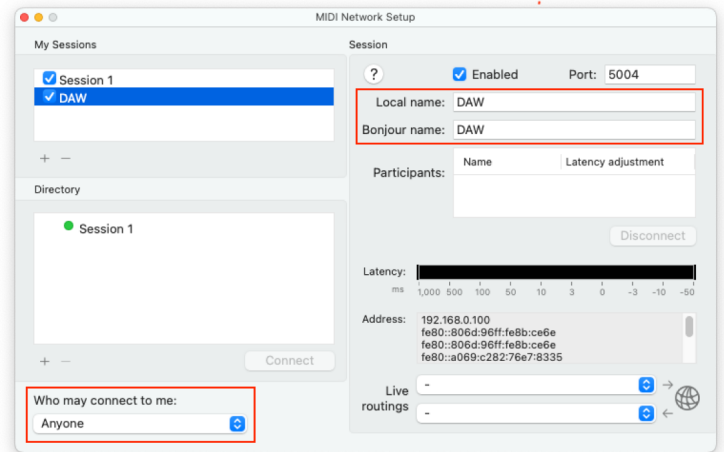
## ZONE J -TRANSPORT Snapshot

Name	Modifiers	Function	Notes
<b>MARKER</b>	-	Activates marker mode	<ul style="list-style-type: none"> <li>• Press the <i>Marker</i> button to start. If you do not have a marker button you can assign this command to a function button.</li> <li>• Click the knobs to start the playback from a marker position.</li> </ul>
	SHIFT	Toggles the display of markers in the arranger	
	OPTION	Inserts a anew marker at the current play position	
<b>NUDGE</b>	-	Executes Tap Tempo	
<b>CYCLE/REPEAT</b>	-	Activate/deactivate Cycle mode	Toggle Repeat
<b>DROP</b>	-	Duplicate the selected track	
<b>REPLACE</b>	-	Toggle arranger overdub	
	SHIFT	Toggle launcher overdub	
<b>CLICK</b>	-	Toggle metronome	Change to metronome?
	SHIFT	Toggle metronome ticks	
<b>SOLO</b>	-	Deactivates all solos	
	SHIFT	Deactivates all mutes	
<b>REWIND</b>	-	Move the play cursor to the left.	
	OPTION	Move the play cursor to the closest marker before the current play position.	
<b>DEVICE</b>		• « 8 (MCU TRACK LEFT) - If Device mode is active, the previous device is selected.	
<b>F.FWD</b>	-	Move the play cursor to the right.	
	OPTION	Move the play cursor to the closest marker after the current play position.	
<b>DEVICE</b>		• 8 » (MCU TRACK RIGHT) - If Device mode is active, the next device is selected.	
<b>STOP</b>	-	Stop playback	Press again to move play cursor to start of song. Double click to move play cursor to the end of the song.
<b>PLAY</b>	-	Start/Stop playback. Double click to move play cursor to start of song.	
	SHIFT	Toggle repeat	
	OPTION	Toggle Punch In	
	OPTION+SHIFT	Toggle Punch Out	
<b>RECORD</b>	-	Start/Stop recording	
	SHIFT	Toggle launcher overdub	
	OPTION	Creates a new clip on the selected track and slot, starts play and enables overdub.	
◀ <b>BANK</b> ▶	-	Move track bank focus 8 track up/down. If Device mode is active, the previous device parameter bank is selected.	<ul style="list-style-type: none"> <li>•  &lt; (MCU BANK LEFT) - If Device mode is active, the previous device parameter bank is selected.</li> <li>• &gt;  (MCU BANK RIGHT) - If Device mode is active, the next device parameter bank is selected.</li> </ul>
	OPTION	Moves the selected device to the left/right.	
◀ <b>CHANNEL</b> ▶	-	Move track bank focus 1 tracks up/down. If Device mode is active, the previous/next device is selected.	<ul style="list-style-type: none"> <li>• « 8 (MCU TRACK LEFT) - If Device mode is active, the previous device is selected.</li> <li>• 8 » (MCU TRACK RIGHT) - If Device mode is active, the next device is selected.</li> </ul>
	OPTION	Moves the selected track to the left/right.	
<b>CURSOR ← →</b>		Like pressing the arrow keys on the computer keyboard	
<b>CURSOR ↑ ↓</b>		Like pressing the arrow keys on the computer keyboard	
<b>ZOOM</b>		If active, the arrow buttons left/right zoom the arranger horizontally. The up/down arrows both toggle the height of the track.	
<b>JOG WHEEL</b>	-	Move the playhead forward or back	Press <b>Shift</b> for fine adjustment
	OPTION	Change Tempo	Press <b>Shift</b> for fine adjustment
	CONTROL	Change loop start	Press <b>Shift</b> for fine adjustment
	ALT	Change loop length	Press <b>Shift</b> for fine adjustment
<b>SCRUB</b>	-	Toggles between all editing mode	

# Setup

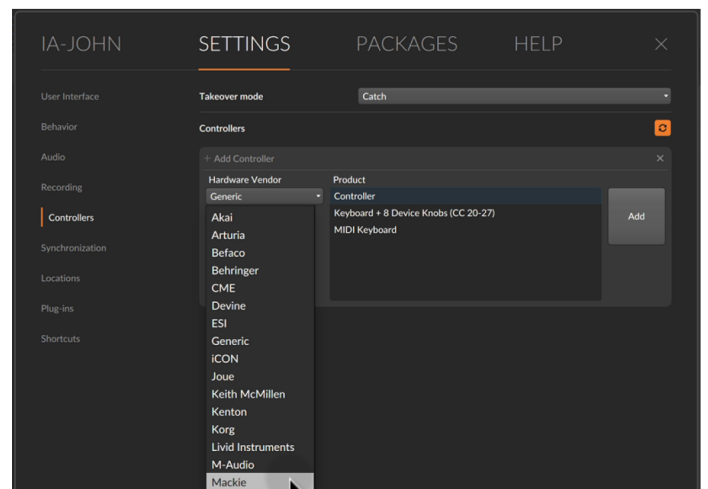
## Create a dedicated MIDI Network Session

1. On your Mac open Audio MIDI Setup app
2. Open MIDI Network Setup window from MIDI Studio Menu
3. Create a new Session and call it "DAW"  
(Fill in both the Local Name and Bonjour Name)
4. Double check that the newly created session is Enabled (Checkbox ticked)
5. Double check that "Who may connect to me" is set to Anyone



## Configure your controller

1. On ONE Control add a new Bitwig controller
2. Inside the controller tap Edit
3. Tap Settings
4. Select the MIDI Setup panel
5. Tap Edit to configure your MIDI connection
6. In the MIDI Network Sessions list, select DAW
7. Close the controller's settings dialog
8. Tap Done to exit controller's editing Mode



## Configure Bitwig

1. Open Bitwig Studio
2. Go to Preferences, Settings, Controllers
3. Press 'Add Controller'
4. Choose 'Mackie' under Hardware Vendor
5. Choose 'MCU - Control Universal', by Jürgen Moßgraber and tap on 'Add'
6. Choose 'Network DAW' as session input and output
7. Finally, Select the 'Mackie MCU Pro' Profile

