



Cakewalk

Cheat Sheet



ZONE A - MAIN LCD

Name	Modifiers	Function	Notes
DISPLAY	-	Main Liquid Crystal Display (LCD)	The main LCD is divided into eight columns, each with two lines of text. Each column displays information for the channel strip controls directly below it. In general, the upper row of each column displays the abbreviated track (or channel) name, and the lower row displays the abbreviated parameter name and its value.

ZONE B - CHANNEL STRIP (1-8)

Name	Modifiers	Function	Notes
V-Pot	-	Changes the assigned parameter	
	M1	Fine adjustment	Push: • sets parameter to default value or toggles an on/off switch
	M2	Shortcut to control certain effect parameters	Push: • arms or disarms displayed parameter for automation
	M3	Shortcut to control certain effect parameters	
	M4	shortcut to control certain effect parameters	
	M1+M2	fine adjustments to the displayed parameter.	Push: • push arms the displayed parameter.
	M1+M3	fine adjustments to the displayed parameter.	Push: • push arms the displayed parameter.
	M1+M4	fine adjustments to the displayed parameter.	Push: • push arms the displayed parameter.
VU-Meter	-	Currently not implemented	Metering messages are not sent from the current Cakewalk-MCU plug-in
REC	-	Arms or disarms the track that the strip is currently controlling	
AUTO	M1	Arm track or bus for automation	
ALL	M4	To disarm all tracks at once	
MUTE	-	Mutes the channel (with Momentary mode).	
AUTO	M1	Arm mute for automation	
ARCHIVE	M2	To archive or unarchive a track	
ALL	M4	To unmute all tracks at once	
SOLO	-	Solos the channel (with Momentary mode).	
ALL	M4	Clear all solos	
SIGNAL		Currently not implemented	Metering messages are not sent from the current Cakewalk-MCU plug-in
SELECT	-	Sets the channel to the select state.	
FADER	-	Controls the volume level of the track	Metering messages are not sent from the current Cakewalk-MCU plug-in

ZONE C - MASTER

Name	Modifiers	Function	Notes
DISPLAY	-	Assignment display	The Assignment display (also referred to as the mode display), to the right of the main LCD, shows a two-digit abbreviation for the current assignment state.
TRACKS	-	Assigns V-pots to one parameter on each track or bus, depending on which Control Group button is depressed.	To display different parameters, press the Edit button so that its light is on, and then use the Channel and Bank buttons. Pushed twice: • Displays a period after the letters in the Assignment window, and assigns V- pots to parameters on a single selected track or bus. If there are more than 8 parameters, press the Edit button so that its light is on, and then use the Channel and Bank buttons to display the other parameters.
SEND	-	Assigns V-pots to one bus send parameter on each track.	To display different parameters, press the Edit button so that its light is on, and then use the Channel and Bank buttons. Pushed twice: • Displays a period after the letters in the Assignment window, and assigns V- pots to bus send parameters on a single selected track.
PAN	-	Assigns V-pots to pan or balance parameter on each displayed track or bus.	Pushed twice: • Displays a period after the letters in the Assignment window, and assigns V- pots to pan or bal parameter on a single selected track or bus.

PLUG-INS	-	Assigns V-pots to one plug-in parameter on each track or bus, depending on which Control Group button is depressed.	To display different parameters, press the Edit button so that its light is on, and then use the Channel and Bank buttons. To select different plug-ins on the same track, hold down M1 and press the Channel buttons. Pushed twice: • Displays a period after the letters in the Assignment window, and assigns V- pots to parameters of a single plug-in on a selected track or bus. If there are more than 8 parameters, press the Edit button so that its light is on, and then use the Channel and Bank buttons to display the other parameters.
EQ	-	Same as Plug-ins, but only displays parameters of supported EQs	Pushed twice: • Same as Plug-ins, but only displays parameters of supported EQs; when pushed three times, displays F1 with a period, and assigns V-pots to band frequency and faders 1-8 to band gain. Holding down M1, M2, M3, or M4 assigns knobs to fine resolution, Q, gain, and band on/off, respectively.
DYN	-	Same as Plug-ins, but only displays parameters of supported Compressors	Pushed twice: • Same as Plug-ins, but only displays parameters of supported Compressors
NAME/VAL	-	Switches display between parameter name and value	
NAME/NUM	M1	Toggle between track names and track numbers	
LCD	M3	Toggle the disabling of LCD updates	
UPDATE	M4	Forces an update of the current unit (the master)	
EDIT	-	Allows Bank and Channel buttons to be used to assign parameters to V-pots	
NUM	M1	Enables Numeric Input mode for Function keys	
FLIP	-	Push once to cause faders to duplicate the V-pot functions (red light blinks)	Pushed twice: • to cause faders and knobs to exchange functions (red light stays on without blinking).
UP LINE	M1	Changes LCD so that lower line becomes upper	
FADER	-	Current main output volume	

ZONE D - TIMECODE

Name	Modifiers	Function	Notes
SMPTE/BEATS	-	View Big Time	
BIGTIME/VIEW	M1	Opens BigTime view	
UPDATE/UNITS	M4	Forces an update of all units	
DISPLAY	-		
RUDE SOLO	-		

ZONE E - FUNCTIONS

Name	Modifiers	Function	Notes
F1	-	Key binding assignment 1	
CUT	M1	Cut	
1	M1+EDIT	Enters number 1 into text box	
F2	-	Key binding assignment 2	
COPY	M1	Copy	
2	M1+EDIT	Enters number 2 into text box	
F3	-	Key binding assignment 3	
PASTE	M1	Paste	
3	M1+EDIT	Enters number 3 into text box	
F4	-	Key binding assignment 4	
DELETE	M1	Delete	
4	M1+EDIT	Enters number 4 into text box	
F5	-	Key binding assignment 5	
SPACE	M1	Space	
5	M1+EDIT	Enters number 5 into text box	

F6	-	Key binding assignment 6	
ALT	M1	Alt	
6	M1+EDIT	Enters number 6 into text box	
F7	-	Key binding assignment 7	
TAB	M1	Tab	
7	M1+EDIT	Enters number 7 into text box	
F8	-	Key binding assignment 8	
BACKSPACE	M1	Backspace	
8	M1+EDIT	Enters number 8 into text box	

ZONE F - COMMANDS

Name	Modifiers	Function	Notes
NEW AUDIO	-	Insert audio track	
CLONE	M1	Track-Clone	
DELETE	M2	Track/Delete	
WIPE	M3	Track/Wipe	
NEW MIDI	-	Insert MIDI track	
CLONE	M1	Track-Clone	
DELETE	M2	Track/Delete	
WIPE	M3	Track/Wipe	
FIT TRACKS	-	Fit tracks to window	
ALL	M1	Show all tracks	
SELECTED	M2	Show only selected tracks	
SHOW FIT	M3	Show and fit selection	
HIDE	M4	Hide selected tracks	
FIT PROJECT	-	Fit project to window	
OK/ENTER	-	Enter	
ENTER	M1+EDIT	Enter	
CANCEL	-	Cancel	
CANCEL	M1+EDIT	Cancel	
WINDOW ►	-	Next window	
◄ WINDOW	M1	Previous window	
INFO	M2	File-Info	
TAB	M1+EDIT	Tab	
SHIFT TAB	M1	While in numeric input mode: • Shift+Tab	
CLOSE WIN	-	Close window	
BACKSPACE	M1	Backspace	
SPACEBAR	M2	Spacebar	
BACKSPACE	M1+EDIT	Backspace	
SPACEBAR	M1	While in numeric input mode: • Spacebar	

ZONE G - MODIFIERS

Name	Modifiers	Function	Notes
M1	-	Modifies other button functions	
M2	-	Modifies other button functions	
M3	-	Modifies other button functions	
M4	-	Modifies other button functions	

ZONE H - AUTOMATION

Name	Modifiers	Function	Notes
READ/OFF	-	Enable/disable playback of automation	
FADERS	M1	Toggle faders on and off	
SNAPSHOT	-	Automation snapshot	
CTRL TRACK	-	Assigns Mackie's faders and controls to tracks	
DISARM	-	Disarm all automation controls	
ALL	M1	Disarm all tracks	
OFFSET	-	Toggle between Offset and Envelope modes	
DEF FADERS	M3	Set all faders to defaults	
DEF V-POTS	M4	Set all V-pots to defaults	
SAVE	-	Save	
SAVE AS	M1	Save AS	

ZONE I - UTILITIES

Name	Modifiers	Function	Notes
CTRL AUX	-	Assigns Mackie's faders and controls to buses	
CTRL MAIN	-	Assigns Mackie's faders and controls to buses	
UNDO	-	Undo	
HISTORY	M1	Edit-Undo History	
UNDO ZOOM	M2	Undo Zoom	
REJ LOOP	M3	Reject loop take	
REDO	-	Redo	
REDO ZOOM	M2	Redo Zoom	

ZONE J -TRANSPORT

Name	Modifiers	Function	Notes
◀ MARKER ▶	-	Mutually exclusive	
	M1	Insert-Marker	
	M2	View-Markers	
↑ LOOP ↓	-	Mutually exclusive	
	M1	Transport-Loop/Auto Shuttle	
SET LOOP	M2	Set Loop to Selection	
↑ SELECT ↓	-	Mutually exclusive	
	M1	Select current track	
	M2	Select (extend) current track	
EDIT/S.ALL	M3	Edit-Select All	
EDIT/S.NONE	M4	Edit-Select None	
↑ PUNCH ↓	-	Mutually exclusive	
	M1	Transport-Record Options	
SET PUNCH	M2	Set Punch to Selection	
JOG PARAM.	-	Allows Jog Wheel to be used for numeric input	
MEASURES	M1	Sets jog resolution to measures	
BEATS	M2	Sets jog resolution to beats	
TICKS	M3	Sets jog resolution to ticks	
LOOP	-	Toggle loop mode	
	M1	Transport-Loop/Auto Shuttle	
HOME	-	Go to beginning	
END	M1	Go to end	

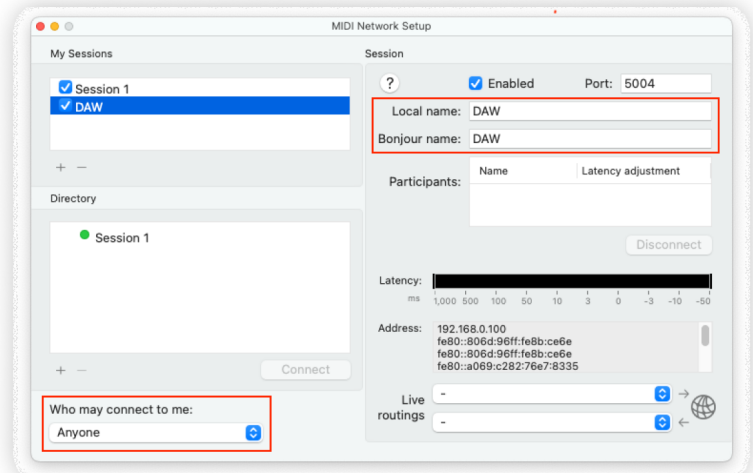
HOME	-	Go to beginning	
END	M1	Go to end	
REWIND	-	Rewind	
BEGIN	M1	Go to beginning	
LEFT	MARKER	Previous marker	When Marker button is depressed
BEGIN	LOOP	Go to loop start	When Loop button is depressed
BEGIN	PUNCH	Go to punch in	When Punch button is depressed
LEFT	SELECT	Go to From	When Select button is depressed
NEW	M1+MARKER	Insert Marker	
LEFT	M1+LOOP	Set Loop start marker to the Now time	
LEFT	M1+SELECT	Go to From	
LEFT	M1+PUNCH	Go to Punch In marker	
FFWD	-		
END	M1	Go to end	
RIGHT	MARKER	Next marker	When Marker button is depressed
END	LOOP	Go to loop end	When Loop button is depressed
END	PUNCH	Go to punch out	When Punch button is depressed
RIGHT	SELECT	Go to Thru	When Select button is depressed
NEW	M1+MARKER	Insert Marker	
RIGHT	M1+LOOP	Set Loop end marker to the Now time	
RIGHT	M1+SELECT	Go to Thru	
RIGHT	M1+PUNCH	Go to Punch Out marker	
STOP	-	Stop	
	M1	Reject Loop Take	
PLAY	-	Play	
	M1	Transport-Run Audio	
RECORD	-	Record	
	M1	Transport-Record Automation	
	M2	Transport-Record Options	
◀ BANK ▶	-	Go to previous or next 8 tracks or buses	
◀ TRK/BUS ▶	M1	Go to first or last track or bus	
◀ PARAMETERS ▶	EDIT	Go to previous or next 8 parameters	
◀ PARAMETER ▶	M1+EDIT	Go to first or last parameter	
◀ CHANNEL ▶	-	Go left or right by one channel	
◀ OUTPUT ▶	M1	Assign master fader to previous or next main output	
◀ PARAMETER ▶	EDIT	Go to previous or next parameter	
◀ PLUG-IN ▶	M1+EDIT	Go to previous or next plug-in	

CURSOR ← →	-	mimics computer Arrow key	
	M1	Left: • Shift + Tab	Right: • Tab
	M2	Left: • Backspace	Right: • Spacebar
	ZOOM	Left: • Zoom out horizontally	Right: • Zoom in horizontally
	M4+ZOOM		Right: • Fit project to window
CURSOR ↑ ↓	-	mimics computer Arrow keys	
	M1	Up: • Page Up	Down: • Page Down
	M2	Up: • Home	Down: • End
	ZOOM	Up: • Zoom out vertically	Down: • Zoom in vertically
	M1+ZOOM	Scale waveforms in all tracks	
	M2+ZOOM	Scale waveforms in current track	
	M3+ZOOM	Up: • Zoom current track out vertically	Down: • Zoom current track in vertically
	M4+ZOOM	Up: • Fit tracks to window	Down: • Fit project to window
ZOOM	-	When depressed, changes Arrow buttons into zoom buttons	
JOG WHEEL	-	Moves the Now time; configurable in property page to measures, beats, or ticks	
	M1	Jog in measures (minutes in SMPTE mode)	
	M2	Jog in beats (seconds in SMPTE mode)	
	M3	Jog in ticks (frames in SMPTE mode)	
	M4	Set Balance of current main	
	SCRUB	Scrubs audio or MIDI in current view (Track, Piano Roll, or Staff)	
	JOG PARAM	Change value of current active control (as highlighted in Track view)	
SCRUB	-		

Setup

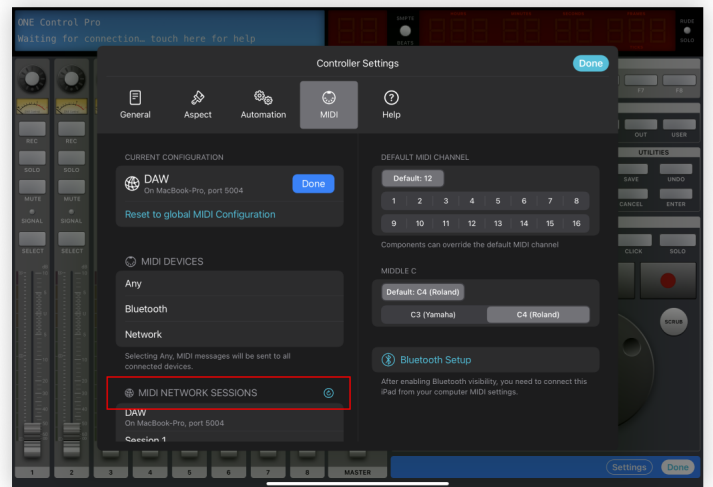
Create a dedicated MIDI Network Session

1. On your Mac open Audio MIDI Setup app
2. Open MIDI Network Setup window from MIDI Studio Menu
3. Create a new Session and call it "DAW"
(Fill in both the Local Name and Bonjour Name)
4. Double check that the newly created session is Enabled (Checkbox ticked)
5. Double check that "Who may connect to me" is set to Anyone



Configure your controller

1. On ONE Control add a new Cakewalk BandLab controller
2. Inside the controller tap Edit
3. Tap Settings
4. Select the MIDI Setup panel
5. Tap Edit to configure your MIDI connection
6. In the MIDI Network Sessions list, select DAW
7. Close the controller's settings dialog
8. Tap Done to exit controller's editing Mode



Configure Cakewalk by Bandlab

1. Open Cakewalk by Bandlab
2. Go to Preferences, Edit > Preferences
3. Under MIDI > Devices, Select your Input and Output MIDI device.
4. Under MIDI > Control Surfaces, click the Add Surface button to open the Controller/Surface Settings dialog box.
5. In the Controller/Surface field of the Controller/Surface Settings dialog box, Select Mackie Control.
6. Set In and Out Port to DAW (Session name)
7. Click Apply and OK to save your changes

