



ONE Control

Reaper

# Cheat Sheet

ONE Control+  
Version 1.3.3

REC

SOLO

MUTE

SIGNAL

SELECT

REC

SOLO

MUTE

SIGNAL

SELECT

REC

SOLO

MUTE

SIGNAL

SELECT

REC

SOLO

MUTE

SIGNAL

SELECT

REC

SOLO

MUTE

SIGNAL

SELECT

REC

SOLO

MUTE

SIGNAL

SELECT

REC

SOLO

MUTE

SIGNAL

SELECT

REC

SOLO

MUTE

SIGNAL

SELECT

1

2

3

4

5

6

7

8

1

2

3

4

5

6

7

8

VPOT ASSIGN

TRACK

PAN

EQ

SEND

PLUG-IN

INSTR.

NAME/VAL

GLOBAL

FLIP

MASTER

SMPT

BEATS

HOURS

MINUTES

SECONDS

FRAMES

RUDE

SOLO

MARKERS

F1

F2

F3

F4

F5

F6

F7

F8

EDIT COMMANDS

TRACK

ITEMS

TAKES

CREATE

PROJ.

MIXER

TR.FX

MASTER

MODIFIERS

SHIFT

OPTION

CTRL

ALT

AUTOMATION

READ/OFF

WRITE

TOUCH

LATCH

GROUP

PROJECT

SAVE

UNDO

CANCEL

ENTER

TRANSPORT

MARKER

NUDGE

LOOP

RECORD

METRON.

SOLO

←

→

□

▶

●

◀

BANK

▶

◀

CHANNEL

▶

↑

↓

↶

↷

SCRUB

Reaper

?

!

Edit

×

### ZONE A - MAIN LCD

Name	Modifiers	Function	Notes
DISPLAY	-	Main Liquid Crystal Display (LCD)	

### ZONE B - CHANNEL STRIP (1-8)

Name	Modifiers	Function	Notes
V-Pot	-	The v-pot controls track volume by default but can be flipped to control track panning.	
VU-Meter	-	Shows the level of the channel output (in dB)	
REC	-	Rec track	
MUTE	-	Mutes/unmutes the track nonexclusively.	
SOLO	-	Listen the channel strip in isolation	
SIGNAL	-	Shows the signal activity of the channel output	
SELECT	-	Select track	
FADER	-	Adjusts the channel level	

### ZONE C - MASTER

Name	Modifiers	Function	Notes
DISPLAY	-	Assignment display	
TRACK	-	Currently unassigned	
SEND	-	Currently unassigned	
PAN	-	Currently unassigned	
PLUG-IN	-	Currently unassigned	
EQ	-	Currently unassigned	
INSTR.	-	Currently unassigned	
NAME/VAL	-	Currently unassigned	
GLOBAL	-	Currently unassigned	
FLIP	-		
FADER	-	Adjust Master volume	

### ZONE D - TIMECODE

Name	Modifiers	Function	Notes
SMPTE/BEATS	-		When you press the SMPTE/Beats button in the Display section, the time display of Mackie Control will switch between "bars and beats" and the timecode format as selected in the project setup of Cubase.
DISPLAY	-	Time display	
RUDE SOLO	-	Solo Led	

## ZONE E - MARKERS

Name	Modifiers	Function	Notes
F1	-	Go to marker 1	When enabled "Map F1-F8 to go to markers" on Control Surface Settings
F2	-	Go to marker 2	
F3	-	Go to marker 3	
F4	-	Go to marker 4	
F5	-	Go to marker 5	
F6	-	Go to marker 6	
F7	-	Go to marker 7	
F8	-	Go to marker 8	

## ZONE F - VIEW

Name	Modifiers	Function	Notes
ED.TRACK	-	Currently unassigned	
ED.ITEMS	-	Currently unassigned	
ED.TAKES	-	Currently unassigned	
CREATE	-	Currently unassigned	
PROJECT	-	Currently unassigned	
MIXER	-	Currently unassigned	
TRK.FX	-	Currently unassigned	
MASTER	-	Currently unassigned	

## ZONE G - MODIFIERS

Name	Modifiers	Function	Notes
SHIFT	-		
OPTION	-		
CONTROL	-		
ALT	-		

## ZONE H - VIEWS

Name	Modifiers	Function	Notes
READ/OFF	-	Currently unassigned	
SEL.ALL	CONTROL	Select All	
WRITE	-	Currently unassigned	
SEL.ALL	CONTROL	Select All	
TRIM	-	Currently unassigned	
SEL.ALL	CONTROL	Select All	
TOUCH	-	Currently unassigned	
SEL.ALL	CONTROL		
LATCH	-	Currently unassigned	
SEL.ALL	CONTROL	Select All	
GROUP	-	Currently unassigned	

## ZONE I - FUNCTIONS

Name	Modifiers	Function	Notes
<b>SAVE</b>	-	Save	
SAVE AS	SHIFT	Save as	
<b>UNDO</b>		Undo	
REDO	SHIFT	Redo	
CANCEL		Currently unassigned	
ENTER		Currently unassigned	

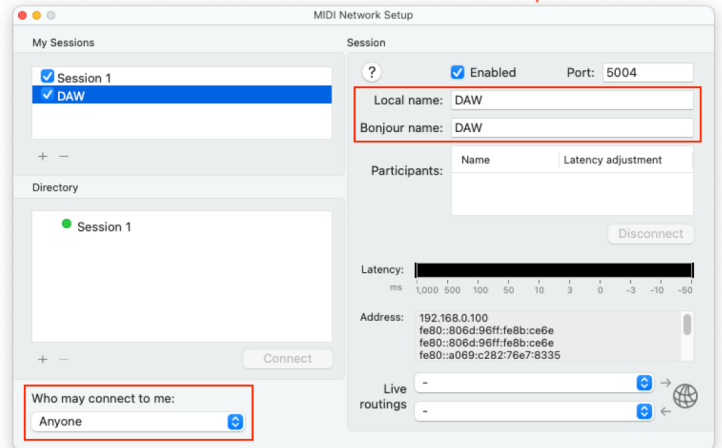
## ZONE J -TRANSPORT

Name	Modifiers	Function	Notes
<b>MARKER</b>	-	Create marker	
<b>NUDGE</b>	-		
<b>LOOP</b>	-	Loop On/Off	
REGORD	-	Currently unassigned	
REPLAGE		Currently unassigned	
<b>METRON.</b>	-	Metronome On/Off	
<b>SOLO ALL</b>	-	Solo Off All Tracks	
<b>REWIND</b>	-	Shuttle rewind	
LEFT	MARKER	Prev marker	
<b>F.FWD</b>	-	Shuttle forward	
RIGHT	MARKER	Next marker	
<b>STOP</b>	-	Stop	
<b>PLAY</b>	-	Play	
<b>RECORD</b>	-	Record	
◀ <b>BANK</b> ▶	-	Shift fader bank LEFT/RIGHT by number of channel strips	
◀ <b>CHANNEL</b> ▶	-	Shift fader bank LEFT/RIGHT by one channel	
<b>ARROWS</b>	-	Cursor Keys navigate the arrangement (depending on current window focus).	
<b>ZOOM</b>	-	Enable/disable Zoom mode	
<b>JOG WHEEL</b>	-	Move cursor	
<b>SCRUB</b>	-		

# Setup

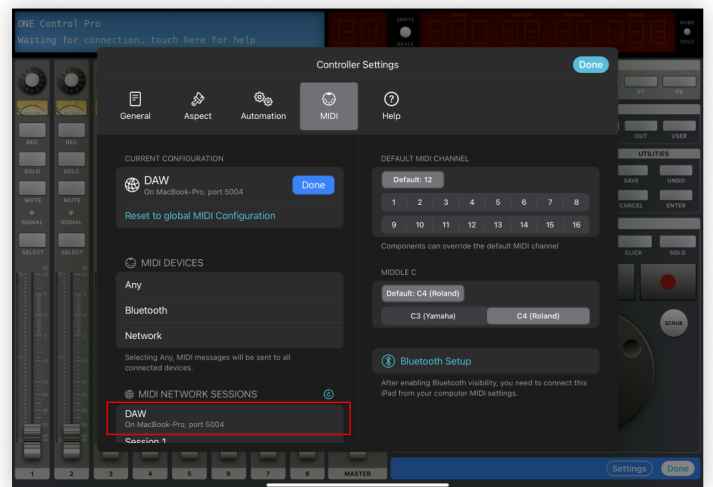
## Create a dedicated MIDI Network Session

1. On your Mac open Audio MIDI Setup app
2. Open MIDI Network Setup window from MIDI Studio Menu
3. Create a new Session and call it "DAW"  
(Fill in both the Local Name and Bonjour Name)
4. Double check that the newly created session is Enabled (Checkbox ticked)
5. Double check that "Who may connect to me" is set to Anyone



## Configure your controller

1. On ONE Control add a new Reaper controller
2. Inside the controller tap Edit
3. Tap Settings
4. Select the MIDI Setup panel
5. Tap Edit to configure your MIDI connection
6. In the MIDI Network Sessions list, select DAW
7. Close the controller's settings dialog
8. Tap Done to exit controller's editing Mode



## Configure Reaper

1. Open Reaper
2. Open Preferences
3. Select Control/OSC/web option under Plug-ins
4. Press Add button
5. Select Mackie Control Universal as Control surface mode, then use your DAW session as MIDI input and output
6. Apply and close preferences

