



# Cheat Sheet



#### ZONE A - MAIN LCD

| Name    | Modifiers | Function                     | Notes |
|---------|-----------|------------------------------|-------|
| DISPLAY | -         | AlphanumericTrackNamedisplay |       |

#### ZONE B - CHANNEL STRIP (1-8)

| Name     | Modifiers | Function                                                                | Notes                                                    |
|----------|-----------|-------------------------------------------------------------------------|----------------------------------------------------------|
| V-Pot    | -         | Rotary controls for panning, with Rotary Value display and Rotary touch |                                                          |
| VU-Meter |           | Currently unassigned                                                    |                                                          |
| REC      | -         | Record button to record-enable tracks                                   | Only works if an input is patched to a track input       |
| MUTE     | -         | Mute                                                                    |                                                          |
| SOLO     | -         | Solo                                                                    | With a double-press selecting or de-selecting that track |
| SIGNAL   |           | Currently unassigned                                                    |                                                          |
| SELECT   | -         | Select to select the track corresponding to that channel strip          |                                                          |
| FADER    | -         | Fader control and optional Level display                                |                                                          |

#### ZONE C - MASTER

| Name     | Modifiers | Function             | Notes |
|----------|-----------|----------------------|-------|
| DISPLAY  |           | Currently unassigned |       |
| TRACK    |           | Currently unassigned |       |
| PAN      |           | Currently unassigned |       |
| EQ       |           | Currently unassigned |       |
| SEND     |           | Currently unassigned |       |
| PLUG-IN  |           | Currently unassigned |       |
| INSTR.   |           | Currently unassigned |       |
| NAME/VAL |           | Currently unassigned |       |
| GLOBAL   |           | Currently unassigned |       |
| FLIP     |           | Currently unassigned |       |
| FADER    |           | Currently unassigned |       |

#### ZONE D - TIMECODE

| Name        | Modifiers | Function             | Notes                                                                                                                                                                                                                                                                                                                           |
|-------------|-----------|----------------------|---------------------------------------------------------------------------------------------------------------------------------------------------------------------------------------------------------------------------------------------------------------------------------------------------------------------------------|
| SMPTE/BEATS |           | Currently unassigned |                                                                                                                                                                                                                                                                                                                                 |
| DISPLAY     |           | Currently unassigned |                                                                                                                                                                                                                                                                                                                                 |
| RUDE SOLO   | -         | Solo Led             | The Solo LED (Rude Solo on the Mackie Control) is lit when a channel strip is set to solo or when Solo mode is turned on. It is a helpful reminder in situations where you have soloed a channel strip, then switched the fader bank, resulting in the Solo LED of the soloed channel strip being hidden on the control surface |

#### ZONE E - FUNCTIONS

| Name | Modifiers | Function             | Notes |
|------|-----------|----------------------|-------|
| F1   |           | Currently unassigned |       |
| F2   |           | Currently unassigned |       |
| F3   |           | Currently unassigned |       |
| F4   |           | Currently unassigned |       |
| F5   |           | Currently unassigned |       |
| F6   |           | Currently unassigned |       |
| F7   |           | Currently unassigned |       |
| F8   |           | Currently unassigned |       |

#### ZONE F - GLOBAL VIEW

| Name   | Modifiers | Function | Notes |
|--------|-----------|----------|-------|
| MIDI   | -         |          |       |
| INPUTS | -         |          |       |
| AUDIO  | -         |          |       |
| INSTR. | -         |          |       |
| AUX    | -         |          |       |
| BUS    | -         |          |       |
| OUT    | -         |          |       |
| USER   | -         |          |       |

#### ZONE G - MODIFIERS

| Name    | Modifiers | Function | Notes |
|---------|-----------|----------|-------|
| SHIFT   | -         |          |       |
| OPTION  | -         |          |       |
| CONTROL | -         |          |       |
| CMD/ALT | -         |          |       |

#### ZONE H - AUTOMATION

| Name     | Modifiers | Function                  | Notes |
|----------|-----------|---------------------------|-------|
| READ/OFF | -         | Toggle Automation         |       |
| WRITE    | -         | Activate Write automation |       |
| TRIM     | -         | Activate Trim automaion   |       |
| TOUCH    | -         | Activate Touch automation |       |
| LATCH    | -         | Activate Latch automation |       |
| GROUP    | -         | Currently unassigned      |       |

#### ZONE I - UTILITIES

| Name   | Modifiers | Function             | Notes                                        |
|--------|-----------|----------------------|----------------------------------------------|
| SAVE   | -         |                      |                                              |
| UNDO   | -         | Undo                 |                                              |
| REDO   | OPTION    |                      | Pressing the UNDO + OPTION buttons does Redo |
| CANCEL |           | Currently unassigned |                                              |
| ENTER  |           | Currently unassigned |                                              |

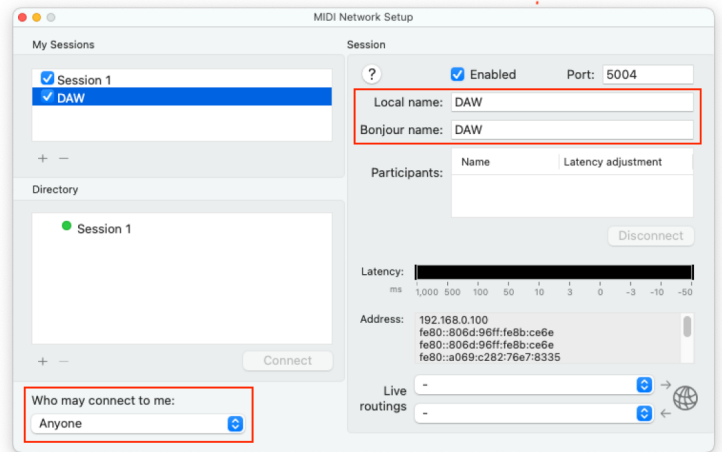
## ZONE J -TRANSPORT

| Name              | Modifiers | Function                | Notes                                                                                                                        |
|-------------------|-----------|-------------------------|------------------------------------------------------------------------------------------------------------------------------|
| <b>MARKER</b>     | -         | Add a marker            | Pressing the MARKER + STOP buttons sets Home<br>Pressing the MARKER + FF/REW buttons jumps the play head forward or backward |
| <b>NUDGE</b>      | -         |                         |                                                                                                                              |
| <b>CYCLE</b>      | -         |                         |                                                                                                                              |
| <b>DROP</b>       | -         |                         |                                                                                                                              |
| <b>REPLACE</b>    | -         |                         |                                                                                                                              |
| <b>CLICK</b>      | -         |                         |                                                                                                                              |
| <b>SOLO</b>       | -         | MasterSoloclear/restore |                                                                                                                              |
| <b>REWIND</b>     | -         | Rewind                  |                                                                                                                              |
| BEGIN             | MARKER    |                         |                                                                                                                              |
| <b>F.FWD</b>      | -         | Fast Forward            |                                                                                                                              |
| END               | MARKER    |                         |                                                                                                                              |
| <b>STOP</b>       | -         | Stop                    | Double-press the STOP button for Home in the Timeline                                                                        |
| HOME              | MARKER    |                         |                                                                                                                              |
| <b>PLAY</b>       | -         | Play                    | Double-press the PLAY button to “play again”                                                                                 |
| <b>RECORD</b>     | -         | Record                  | Press RECORD + PLAY to begin recording if one or more tracks is record-enabled)                                              |
| ◀ BANK ▶          |           | Currently unassigned    |                                                                                                                              |
| ◀ CHANNEL ▶       | -         |                         |                                                                                                                              |
| <b>CURSOR</b> ← → | -         |                         |                                                                                                                              |
| <b>CURSOR</b> ↑ ↓ | -         |                         |                                                                                                                              |
| <b>ZOOM</b>       | -         |                         |                                                                                                                              |
| <b>JOG WHEEL</b>  | -         | Jog control             | Press SCRUB and rotate the jog wheel                                                                                         |
| <b>SCRUB</b>      | -         |                         |                                                                                                                              |

# Setup

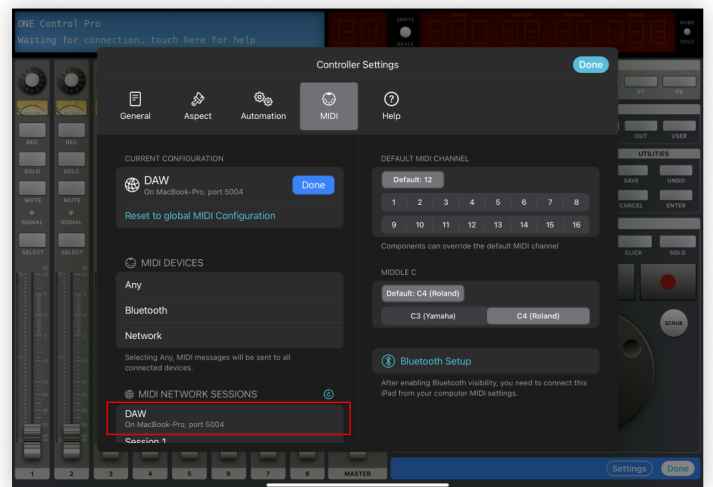
## Create a dedicated MIDI Network Session

1. On your Mac open Audio MIDI Setup app
2. Open MIDI Network Setup window from MIDI Studio Menu
3. Create a new Session and call it "DAW"  
(Fill in both the Local Name and Bonjour Name)
4. Double check that the newly created session is Enabled (Checkbox ticked)
5. Double check that "Who may connect to me" is set to Anyone



## Configure your controller

1. On ONE Control add a new DaVinci controller
2. Inside the controller tap Edit
3. Tap Settings
4. Select the MIDI Setup panel
5. Tap Edit to configure your MIDI connection
6. In the MIDI Network Sessions list, select DAW
7. Close the controller's settings dialog
8. Tap Done to exit controller's editing Mode



## Configure DaVinci Resolve

1. Open DaVinci Resolve
2. Select Control Panels from Preferences menu, select "MCU compatible" on MIDI Protocol
3. Select the MIDI session Network DAW (Session name) for MIDI Input/Output
4. Save
5. In ONE Control, open your DaVinci controller
6. DaVinci Resolve should automatically find and configure a DaVinci control surface for you

