



ONE Control

Harrison Mixbus

Cheat Sheet

ONE Control+
Version 1.4.2

REC

SOLO

MUTE

SIGNAL

SELECT

dB

1

REC

SOLO

MUTE

SIGNAL

SELECT

dB

2

REC

SOLO

MUTE

SIGNAL

SELECT

dB

3

REC

SOLO

MUTE

SIGNAL

SELECT

dB

4

REC

SOLO

MUTE

SIGNAL

SELECT

dB

5

REC

SOLO

MUTE

SIGNAL

SELECT

dB

6

REC

SOLO

MUTE

SIGNAL

SELECT

dB

7

REC

SOLO

MUTE

SIGNAL

SELECT

dB

8

ASSIGN

TRACK

PAN

EQ

SEND

PLUG-IN

INSTR.

NAME/VAL

GLOBAL

FLIP

C

MASTER

SMPT

BEATS

HOURS

MINUTES

SECONDS

FRAMES

RUDE

SOLO

F1

F2

F3

F4

F5

F6

F7

F8

MIDI

INPUTS

AUDIO

INSTR.

AUX

BUS

OUT

USER

MODIFIERS

SHIFT

CONTROL

OPTION

CMD/ALT

AUTOMATION

READ/OFF

TOUCH

TRIM

LATCH

GROUP

UTILITIES

SAVE

CANCEL

UNDO

ENTER

TRANSPORT

MARKER

NUDGE

CYCLE

DROP

REPLACE

CLICK

SOLO

BANK

CHANNEL

SCRUB

J

Mixbus |

i

o

?

!

Edit

x

ZONE A - MAIN LCD

Name	Modifiers	Function	Notes
DISPLAY	-	Main Liquid Crystal Display (LCD)	The main LCD is divided into eight columns, each with two lines of text. Each column displays information for the channel strip controls directly below it. The information displayed changes when you edit different parameters and when Mixer view or Channel view is active. In general, the upper row of each column displays the abbreviated track (or channel) name, and the lower row displays the abbreviated parameter name and its value.

ZONE B - CHANNEL STRIP (1-8)

Name	Modifiers	Function	Notes
V-Pot	-	Modify parameter displayed in LCD	
VU-Meter	-	Shows the level of the channel output (in dB)	
REC	-	Activate/deactivate Record Enable button of track	
MUTE	-	Activate/deactivate Mute button of track's channel strip.	
SOLO	-	Activate/deactivate Solo button of track's channel strip.	
SIGNAL	-	Shows the signal activity of the channel output	
SELECT	-	Select channel strip	
FADER	-	Adjust channel volume	

ZONE C - MASTER

Name	Modifiers	Function	Notes
DISPLAY	-	Assignment display.	The Assignment display (also referred to as the mode display), to the right of the main LCD, shows a two-digit abbreviation for the current assignment state. A period (.) appears at the bottom-right corner of the display when Channel view is active.
TRACK	-	To use the Track controls, you must first "select" a channel using a channel select button.	The 8 knobs will switch to show the channel's Input trim, solo isolate, solo lock, and polarity switches.
PAN	-	This is the default setting. When this is selected, each channel's knob will control its pan.	Clicking the knob will toggle the master bus assign on/off.
EQ	-	To use the EQ controls, you must first "select" a channel using a channel Select button. The 8 knobs will switch to show the selected channel's EQ settings	This varies for channels vs mixbuses vs master bus.
SEND	-	To use the Send controls, you must first "select" a channel using a channel Select button. The 8 knobs will switch to show the channel's mixbus send levels. You can adjust the send level with a knob, or click the send to enable/disable it.	You may also click the "Flip" button to control the mixbus send levels from the fader.
PLUG-IN	-	This feature is currently unimplemented.	
COMP.	-	For Mixbus, "Inst" is used to control the channel compressor. To use the Compressor controls, you must first "select" a channel using a channel Select button.	The 8 knobs will switch to show the selected channel's compressor settings.
NAME/VAL	-	Switches display between parameter name and value.	
GLOBAL	-	This resets the view to showing channels in sequential order, with the first available mixer channel on the far left of the surface.	
FLIP	-	Flips the V-Pots with their corresponding faders.	
FADER	-	Adjust Master volume.	

ZONE D - TIMECODE

Name	Modifiers	Function	Notes
SMPTE/BEATS	-	When you press the SMPTE/Beats button in the Display section, the time display of Mackie Control will switch between "bars and beats".	
DISPLAY	-	Time display.	
RUDE SOLO	-	Solo Led.	

ZONE E - FUNCTIONS

Name	Modifiers	Function	Notes
MIX	-	Show Mixer View	The 8 Function buttons can be assigned any "action" (keyboard shortcut) in the Mackie setup dialog.
EDIT	-	Show Edit View	The 8 Function buttons can be assigned any "action" (keyboard shortcut) in the Mackie setup dialog.
METER	-	Show Meterbridge	The 8 Function buttons can be assigned any "action" (keyboard shortcut) in the Mackie setup dialog.
CLOCK	-	Show Clock	The 8 Function buttons can be assigned any "action" (keyboard shortcut) in the Mackie setup dialog.
SNAPSHOTS	-	Show Snapshots	The 8 Function buttons can be assigned any "action" (keyboard shortcut) in the Mackie setup dialog.
MIXER	-	Show Mixer List	The 8 Function buttons can be assigned any "action" (keyboard shortcut) in the Mackie setup dialog.
EDITOR	-	Show Editor Mixer	The 8 Function buttons can be assigned any "action" (keyboard shortcut) in the Mackie setup dialog.
F8	-	The 8 Function buttons can be assigned any "action" (keyboard shortcut) in the Mackie setup dialog.	

ZONE F - GLOBAL VIEW

Name	Modifiers	Function	Notes
MIDI	-	This shows only the MIDI (Instrument) tracks on the surface.	Audio tracks and buses will be skipped over, if you adjust the Channel or Bank buttons.
INPUTS	-	This shows "buses" that were created with the New Track dialog. Buses are often used as live inputs to the mixer.	MIDI tracks, audio tracks, and mixbuses will be skipped over, if you adjust the Channel or Bank buttons.
AUDIO	-	This shows only the Audio tracks on the control surfaces.	Midi tracks and buses will be skipped over, if you adjust the Channel or Bank buttons.
INSTR.	-	This operates the same as MIDI Tracks button.	
AUX	-	This operates the same as the Inputs button.	
BUS	-	This shows the mix buses.	
OUT	-	Currently unimplemented; this will show the Click (metronome), Auditioner (solo bus), and Monitor buses in the future.	
USER	-	This shows the first 8 channels that are "selected" in the mixer GUI. This allows you to select a discontinuous collection of channels, and control them side-by-side on the control surface.	

ZONE G - MODIFIERS

Name	Modifiers	Function	Notes
SHIFT	-	The "Shift" key is largely used for default functions.	
OPTION	-	The Modify buttons are used, similar to modifiers on your keyboard, to add additional features to the Mackie protocols.	Note that the Mackie modifier keys do NOT affect what you are doing with the keyboard/mouse.
CONTROL	-	The "Control, Command, and Alt" buttons are reserved for users to assign their own actions.	
CMD/ALT	-	The "Control, Command, and Alt" buttons are reserved for users to assign their own actions.	

ZONE H - AUTOMATION

Name	Modifiers	Function	Notes
READ/OFF	-	The Automation buttons apply to the selected track's fader.	
WRITE	-	The Automation buttons apply to the selected track's fader.	
TRIM	-	"Latch", and "Trim" are currently disabled, but these features will be added in the future.	
TOUCH	-	The Automation buttons apply to the selected track's fader.	
LATCH	-	"Latch", and "Trim" are currently disabled, but these features will be added in the future.	
GROUP	-	The "Group" button currently turns automation OFF.	

ZONE I - UTILITIES

Name	Modifiers	Function	Notes
SAVE	-	Saves the currently-opened session snapshot.	
UNDO	-	Un-does the most recent editor operation (such as a recording).	-Shift+Undo to "redo".
CANCEL	-	Deselects all tracks and objects.	
ENTER	-	Selects all tracks.	

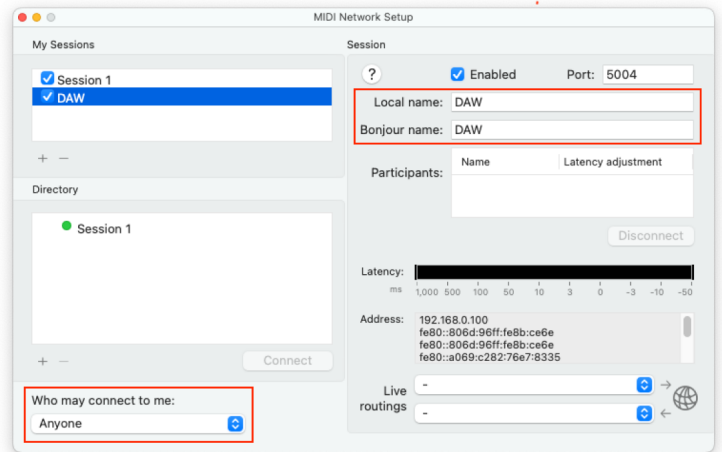
ZONE J -TRANSPORT

Name	Modifiers	Function	Notes
MARKER	-	Creates a new marker.	
	SHIFT	Shift+Marker deletes the marker (if one is currently under the playhead).	Marker+ffwd = next marker; Marker+rewd = last marker.
NUDGE	-	Combined with the ffwd/rewind buttons, this will nudge the playhead forward or back.	
CYCLE	-	This initiates a "loop" playback between the Loop markers, if you are currently playing.	
	SHIFT	Shift+cycle = use currently selected range as the Loop range.	
PUNCH IN	-	Sometimes called "Mark In": This uses the current playhead location to set the selection start time.	
	SHIFT	Shift+Drop = Toggle Punch IN.	
PUNCH OUT	-	Sometimes called "Mark Out": This uses the current playhead location to set the selection end time.	
	SHIFT	Shift+Replace = Toggle Punch OUT.	
CLICK	-	Toggles the Click (metronome) on and off.	
	SHIFT	Shift+Click = Set Punch range to current range selection.	
SOLO	-	Clears any track solo's that are currently engaged.	
REWIND	-	Shuttle rewind.	
FFWD	-	Shuttle forward.	
STOP	-	Stop.	
PLAY	-	Play.	
RECORD	-	Record.	
◀ BANK ▶	-	This advances the faders by 8.	
◀ CHANNEL ▶	-	This advances the channels by 1.	
CURSOR ← →	-	The directional arrows move the editor view.	If the Zoom button is engaged, they zoom the x and y axes.
CURSOR ↑ ↓	-	The directional arrows move the editor view.	If the Zoom button is engaged, they zoom the x and y axes.
ZOOM	-	This modifies the directional arrows and Jog Wheel to "zoom" rather than move the view.	
JOG WHEEL	-	Adjusting the wheel will move the playhead.	If the "Zoom" button is engaged, then the wheel zooms in and out on the timeline.
SCRUB	-	Currently no function is assigned to this button.	

Setup

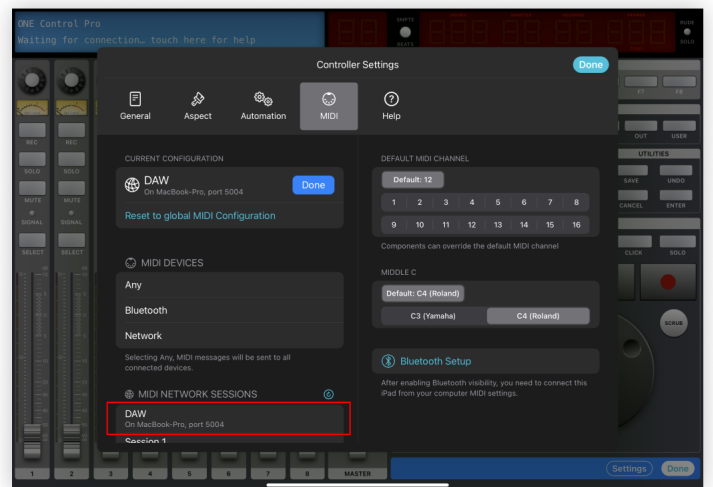
Create a dedicated MIDI Network Session

1. On your Mac open Audio MIDI Setup app
2. Open MIDI Network Setup window from MIDI Studio Menu
3. Create a new Session and call it "DAW"
(Fill in both the Local Name and Bonjour Name)
4. Double check that the newly created session is Enabled (Checkbox ticked)
5. Double check that "Who may connect to me" is set to Anyone



Configure your controller

1. On ONE Control add a new Harrison Mixbus controller
2. Inside the controller tap Edit
3. Tap Settings
4. Select the MIDI Setup panel
5. Tap Edit to configure your MIDI connection
6. In the MIDI Network Sessions list, select DAW
7. Close the controller's settings dialog
8. Tap Done to exit controller's editing Mode



Configure Harrison Mixbus

1. Open the Harrison Mixbus Preferences
2. Go to the MIDI Tab
3. Enable Your Input & Output MIDI network sessions
4. Go to the Control Surfaces Tab
5. Enable the Mackie Control Surface Protocol
6. Double click to configure Mackie Protocol
7. Select Device Type
8. And choose Send & Receive network sessions

