



ONE Control



FL Studio

Cheat Sheet

ONE Control+
Version 1.4.2

REC

SOLO

MUTE

SIGNAL

SELECT

REC

SOLO

MUTE

SIGNAL

SELECT

REC

SOLO

MUTE

SIGNAL

SELECT

REC

SOLO

MUTE

SIGNAL

SELECT

REC

SOLO

MUTE

SIGNAL

SELECT

REC

SOLO

MUTE

SIGNAL

SELECT

REC

SOLO

MUTE

SIGNAL

SELECT

REC

SOLO

MUTE

SIGNAL

SELECT

dB

10

5

0

-5

-10

-15

-20

-25

-30

-35

-40

-45

-50

-55

-60

-65

-70

-75

-80

-85

-90

-95

-100

dB

10

5

0

-5

-10

-15

-20

-25

-30

-35

-40

-45

-50

-55

-60

-65

-70

-75

-80

-85

-90

-95

-100

dB

10

5

0

-5

-10

-15

-20

-25

-30

-35

-40

-45

-50

-55

-60

-65

-70

-75

-80

-85

-90

-95

-100

dB

10

5

0

-5

-10

-15

-20

-25

-30

-35

-40

-45

-50

-55

-60

-65

-70

-75

-80

-85

-90

-95

-100

dB

10

5

0

-5

-10

-15

-20

-25

-30

-35

-40

-45

-50

-55

-60

-65

-70

-75

-80

-85

-90

-95

-100

dB

10

5

0

-5

-10

-15

-20

-25

-30

-35

-40

-45

-50

-55

-60

-65

-70

-75

-80

-85

-90

-95

-100

dB

10

5

0

-5

-10

-15

-20

-25

-30

-35

-40

-45

-50

-55

-60

-65

-70

-75

-80

-85

-90

-95

-100

dB

10

5

0

-5

-10

-15

-20

-25

-30

-35

-40

-45

-50

-55

-60

-65

-70

-75

-80

-85

-90

-95

-100

1

2

3

4

5

6

7

8

VPOT ASSIGN

PAN

STEREO

SENDS

EFFECTS

EQ

FREE

NAME/VAL

SMOOTH

FLIP

MASTER

SMPT

BEATS

HOURS

MINUTES

SECONDS

FRAMES

RUDE

SOLO

FUNCTION SELECT

CUT

COPY

PASTE

INSERT

DELETE

TOOLS

UNDO H.

UNDO/REDO

ITEM SELECTION

PATTR.

MIXER

CH.

TEMPO

FREE1

FREE2

FREE3

FREE4

TRK/MARK

MOVE

LINK CH.

MARK

+MARK

WINDOW/TIME SEL.

BROWSER

WINDOW

IN

OUT

SELECT

UTILITIES

SAVE

MENU

ESCAPE

ENTER

TRANSPORT

SHIFT

EDISON

SNAP

METRONOM.

3..2..1

MODE

PTRN SNG

◀

▶

◻

▶

●

BANK

CHANNEL

↑

↓

←

→

↻

SCRUB

FL Studio

?

!

Edit

×

ZONE A - MAIN LCD

Name	Modifiers	Function	Notes
DISPLAY	-	Main Liquid Crystal Display (LCD)	

ZONE B - CHANNEL STRIP (1-8)

Name	Modifiers	Function	Notes
V-Pot	-	The v-pot controls track volume by default but can be flipped to control track panning.	
VU-Meter	-	Shows the level of the channel output (in dB)	
REC	-	By default, this arms the track for recording in exclusion of all other tracks.	
MUTE	-	Mutes/unmutes the track nonexclusively.	
SOLO	-	Listen the channel strip in isolation	
SIGNAL	-	Shows the signal activity of the channel output	
SELECT	-	Selects the track, both in the DAW and on the Mackie Control, for various functions.	
FADER	-	Adjusts the channel level	

ZONE C - MASTER

Name	Modifiers	Function	Notes
DISPLAY	-	Assignment display	
PAN	-	Assigns V-Pots to Channel Panning	
STEREO	-	Assigns V-Pots to Stereo Separation	
SENDS	-	Assigns V-Pots to Channel Sends	
EFFECTS	-	Assigns V-Pots to Effects Sends	
EQ	-	Assigns V-Pots to EQ Settings	
FREE	-	Set Controller into free mapping mode	
NAME/VAL	-	Change Meters Mode	Swap between vertical, horizontal or disable meters mode
SMOOTH	-	Enable/Disable Control Smoothing	
FLIP	-	Flips V-Pots functions with their corresponding faders and vice versa	
FADER	-		

ZONE D - TIMECODE

Name	Modifiers	Function	Notes
SMPTE/BEATS	-	When you press the SMPTE/Beats button in the Display section, the time display of Mackie Control will switch between "bars and beats" and the timecode format as selected in the project setup of Cubase.	
DISPLAY	-	Time display	
RUDE SOLO	-	Solo Led	

ZONE E - FUNCTIONS

Name	Modifiers	Function	Notes
CUT		Cut	
	SHIFT	Launch Online Manual for current operation	
COPY		Copy	
	SHIFT	Launch Rename Window	
PASTE		Paste	
	SHIFT	Launch Options menu	
INSERT		Insert	
	SHIFT	Edit Channel Labels	
DELETE		Delete	
	SHIFT	View Playlist	
TOOLS		Open nearest Tools menu	
	SHIFT	View Channel Rack	
UNDO HISTORY		Undo History	
	SHIFT	View Piano Roll	
UNDO / REDO		Undo/Redo	
	SHIFT	Open Plug-in / Project Picker	

ZONE F - VIEW

Name	Modifiers	Function	Notes
PATTERN		Choose Pattern	Hold and Navigate using the Jog Wheel
MIXER		Choose Mixer Track	Hold and Navigate using the Jog Wheel
CHANNEL		Choose Channel	Hold and Navigate using the Jog Wheel
TEMPO		Choose Tempo	Hold and Navigate using the Jog Wheel
FREE 1		Currently unassigned	Create your own button assignment
FREE 2		Currently unassigned	Create your own button assignment
FREE 3		Currently unassigned	Create your own button assignment
FREE 4		Currently unassigned	Create your own button assignment

ZONE G - MODIFIERS

Name	Modifiers	Function	Notes
MOVE	-	Move selection using Jog Wheel	
LINK CHANNEL	-	Link Rack Instrument to chosen Channel	
MARK	-	Jump Markers	
	SHIFT + Jog W.	Jump markers and loop section	
+MARK	-	Add Marker	Press again to delete
	SHIFT	Add Alt Marker	

ZONE H - VIEWS

Name	Modifiers	Function	Notes
BROWSER	-	Go to Browser	
MAIN	-	Launch Channel Rack Window	
WINDOW	-	Select Current Window	Hold and Rotate Jog Wheel to Navigate through Windows
IN	-	Punch In	
OUT	-	Punch Out	
SELECT	-	Hold to select loop region	

ZONE I - FUNCTIONS

Name	Modifiers	Function	Notes
SAVE	-	Save / Save as	
MENU	-	Launch Menu	
ESCAPE	-	Escape	
ENTER	-	Enter	

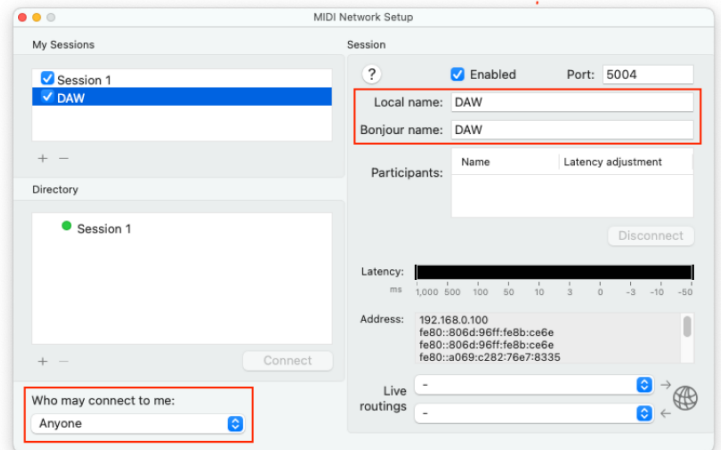
ZONE J -TRANSPORT

Name	Modifiers	Function	Notes
SHIFT	-	Shift Modifier Key	
EDISON	-	Launch Edison for current track	
SNAP	-	Activate/deactivate Snap mode	
	SHIFT	Adjust Snap timing	Browse between 1/2,1/4,1/8 steps, beats or bar
METRONOME	-	Activate/deactivate Metronome	
3..2..1..	-	Activate/deactivate Count-in	
MODE	-	Activate/deactivate Record	
PATTERN SONG	-	Switch between Pattern and Song mode	
REWIND	-	Shuttle rewind	
	SHIFT	Shuttle fine rewind	
F.FWD	-	Shuttle forward	
	SHIFT	Shuttle fine forward	
STOP	-	Stop	
PLAY	-	Play / Pause	
RECORD	-	Record	
◀ BANK ▶	-	Shift fader bank LEFT/RIGHT by number of channel strips	
◀ CHANNEL ▶	-	Shift fader bank LEFT/RIGHT by one channel	
CURSOR ← →	-	Cursor Keys navigate components according to window in focus	
CURSOR ↑ ↓		Cursor Keys navigate components according to window in focus	
ZOOM	-	Zoom session	Hold the Zoom button and use the arrows to zoom session horizontally
JOG WHEEL	-	Jumps to the nearest bar in the Arrangement (<i>no scrub support</i>).	
	SHIFT	Zoom Playlist Vertically	
SCRUB	-	Not supported	

Setup

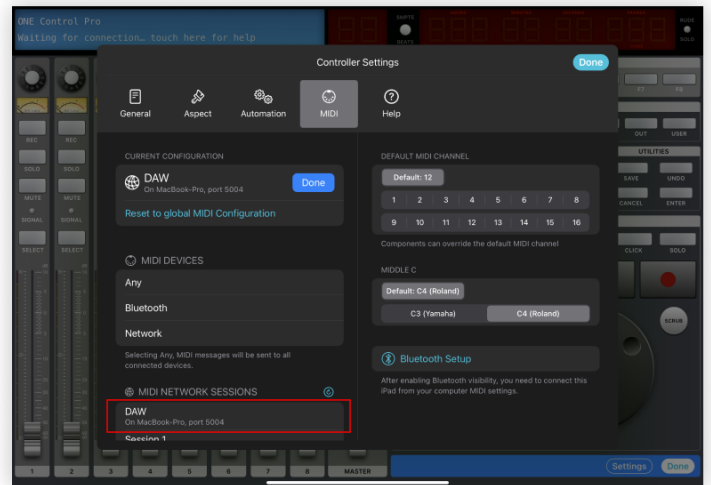
Create a dedicated MIDI Network Session

1. On your Mac open Audio MIDI Setup app
2. Open MIDI Network Setup window from MIDI Studio Menu
3. Create a new Session and call it "DAW"
(Fill in both the Local Name and Bonjour Name)
4. Double check that the newly created session is Enabled (Checkbox ticked)
5. Double check that "Who may connect to me" is set to Anyone



Configure your controller

1. On ONE Control add a new Logic Pro controller
2. Inside the controller tap Edit
3. Tap Settings
4. Select the MIDI Setup panel
5. Tap Edit to configure your MIDI connection
6. In the MIDI Network Sessions list, select DAW
7. Close the controller's settings dialog
8. Tap Done to exit controller's editing Mode



Configure FL Studio

1. Open FL Studio
2. Go to Options > MIDI Settings (F10)
3. Here you should find your Audio MIDI Network sessions (Session 1, DAW, or both)
4. Go ahead and highlight the 'Enable' and 'Send master sync' options
5. Go to 'Controller type' > Legacy > 'Mackie Control Universal'
6. Set MIDI Input and Output ports to the same number (ex.1 and 1)
7. You are now setup.
8. You might need to restart your app or DAW for it to work the first time. Then it will connect automatically.

