



ZONE A - MAIN LCD

Name	Modifiers	Function	Notes
DISPLAY	-		Displays track names, plug-in parameters and other information, depending on what mode the channel strip section is currently operating in.

ZONE B - CHANNEL STRIP (1-8)

Name	Modifiers	Function	Notes
V-Pot	-		The V-POT rotary potentiometer in each channel strip is used for several purposes, including track panning, input/ output assignments and send assignments. For panning, make sure that the ASSIGNMENT LED reads "Pn". If not, press the PAN button in the ASSIGNMENT section. To set the pan V-POT to pan center, press the V-pot. Send mode: • Mutes or unmutes the send.
VU-Meter	-		
REC	-	Arms the track for recording, just like the record-enable buttons for each track in Digital Performer.	If the track does not currently have an input assignment, the REC/RDY button (or the corresponding record-enable buttons in Digital Performer) will not be able to arm the track. If nothing happens when you press any of these buttons, make sure the track has an input assignment. You can not record enable Aux or Master Fader tracks.
SINGLE	CONTROL	Sets the track you press and clears all others.	
ALL	OPTION	Only on record-enable: • To select all tracks	
MONITOR	OPTION	To access the input monitor setting for a track	
INVERT	COMMAND	To deselect the track and select all others	
ALL SEL.	OPTION+SHIFT	Applies the operation to all <i>selected</i> tracks.	
MUTE	-	Toggles muting for the track.	
SINGLE	CONTROL	Sets the track you press and clears all others.	
ALL	OPTION	Applies the operation to all tracks.	
INVERT	COMMAND	To deselect the track and select all others	
ALL SEL.	OPTION+SHIFT	Applies the operation to all <i>selected</i> tracks.	
SOLO	-	Toggles solo mode for the track.	
SINGLE	CONTROL	Sets the track you press and clears all others.	
ALL	OPTION	Applies the operation to all tracks.	
INVERT	COMMAND	To deselect the track and select all others	
ALL SEL.	OPTION+SHIFT	Applies the operation to all <i>selected</i> tracks.	
SIGNAL	-	Acts as a signal present LED	
SELECT	-	Press this button to select the track.	
ADD	SHIFT	To add the track to the current selection	
SINGLE	CONTROL	Sets the track you press and clears all others.	
ALL	OPTION	Applies the operation to all tracks.	
INVERT	COMMAND	Clears the track you press and sets all others.	
DEFAULT	DYN	Only on PAN or SEND value mode: • Pressing a button sets that fader or V- Pot to its default value	
ALL SEL.	OPTION+SHIFT	Applies the operation to all <i>selected</i> tracks.	
FADER	-		If the track is currently set up to record automation, Mackie Control's fader begins to write new automation data into the track as soon as you touch it. When you release the fader, the result depends on the track's current automation mode. If it's in Touch mode, the Mackie Control fader will time-out after a brief moment and return to tracking existing automation in the track. In Overwrite or Latch modes, recording continues until you stop Digital Performer's transport.

ZONE C - MASTER

Name	Modifiers	Function	Notes
DISPLAY	-		Provides a two-character indication of the current channel strip mode (such as "Pn" for Pan mode).
I/O	-	To switch between modes	This clears the track name display, and then shows the following: Pan, SndVal, SndOut, SndPan, Input, Output, Effect, Prefs. To cancel the menu, press the I/O button again.
SENDS	-	Shortcut for Send Value mode	This mode is very similar to Pan mode. You will see "S1" in the two character LED display above the assignment section to indicate that you are working on Send 1. Use the up and down arrow buttons (next to the scrub wheel) to scroll to Send 2 ("S2"), Send 3 ("S3"), etc.
PAN	-	Shortcut for Pan mode	In PAN mode, the V-Pots control stereo panning for each audio and MIDI track. For surround audio tracks (audio tracks that have a surround panner), the V-Pots control the X parameter. To edit the rest of the parameters for a surround track, press the V-Pot button to enter effect edit mode for the panner. To exit, press the EDIT button.
PLUG-INS	-	Shortcut for Effect mode	You will see "E1" in the two character LED display above the assignment section to indicate that you are working on Effect Insert 1. Use the up and down arrow buttons (next to the scrub wheel) to scroll to Effect Insert 2 ("E2"), Effect Insert 3 ("E3"), etc.
EFFECTS	SHIFT	Open Effects window	
EQ	-	EFFECT mode: • To insert a ParaEQ effect in that slot.	EFFECT mode: • Hold down the EQ button, then press the V- Pot associated with a track to insert a ParaEQ effect in that slot.
DYN	-	PAN or SEND Value mode: • Puts the track SELECT buttons and V-Pot buttons into "Default Value Mode". EFFECT mode: • Allows you to pick presets for the effects.	PAN or SEND value mode: • When you hold this button down, those buttons will flash. Pressing a flashing button sets that fader or V-Pot to its default value (i.e. zero dB for a fader, pan center for a pan pot.) EFFECT mode: • Hold down the DYN button, then turn the V-Pot corresponding to the track you want to assign a preset to.
LVL/MTRS	-	To toggle the display of vertical level meters in the channel strip LCD.	Repeatedly press the Time Format button to cycle among Digital Performer's four time formats.
AUDIO/MONITOR	SHIFT	To open the Audio Monitor window	
MIDI/MONITOR	CONTROL	To open the MIDI Monitor window	
EDIT	-	Allows you to pop edit a soundbite. EFFECT mode: • Enters Effect Editing Mode. Pressing again exits effect editing mode.	Allows you to pop edit a soundbite. Position the wiper over a soundbite, press the EDIT button, then press the SELECT button for the track containing the soundbite you wish to edit. EFFECT mode: • Enters Effect Editing Mode. Hold down the EDIT button, then press a V-Pot button to select that effect for editing.
WAVEFORM	SHIFT	Open a Waveform Editor window to do destructive edits on the soundbite.	
MIDI ED.	OPTION	To open a MIDI Edit window (if a MIDI track is selected)	
EVENT LIST	CONTROL	To open an even list window for the selected track	
FLIP	-	PAN mode: • Puts the volume control on the V-Pots and the Pan control on the Faders. SEND value mode: • Puts the volume control on the V-Pots and the send control on the Faders.	Swaps the V-Pots with the faders, so that whatever was being controlled by the V-pots is now controlled by the faders, and vice versa. This can be convenient for automating plug-in parameters, as you may find it easier to move a fader in real time than the V-pot.
FADER	-		Provides control of the master fader in your project, independently of the other 8 faders, which are subject to the fader bank and channel scrolling buttons.

ZONE D - TIMECODE

Name	Modifiers	Function	Notes
TIME/FRMT	-	Time/Format	Press the TIME FORMAT button in the DISPLAY section to cycle among the available time formats.
BIG/COUNT	SHIFT	To open the big counter	
MIDI/VIEW	CONTROL	To open the MIDI Machine Control window	
DISPLAY	-		Mirrors Digital Performer's main counter. Repeatedly press the Time Format button below it to cycle among Digital Performer's four time formats.
RUDE SOLO	-		Flashes when solo mode is engaged. This is especially helpful when the track(s) currently being soloed are not currently being displayed by Mackie Control (they are scrolled to the left or right of the tracks currently being shown).

ZONE E - FUNCTIONS

Name	Modifiers	Function	Notes
ENTER	-		
F1	SHIFT	Send the F keyboard shortcut listed.	You can assign these F Keys to any command in DP's Commands window.
ESCAPE	-		
F2	SHIFT	Send the F keyboard shortcut listed.	You can assign these F Keys to any command in DP's Commands window.
GROUP	-	To create a track group	Select some tracks with SELECT buttons, then press the GROUP button.
UNGROUP	-	To ungroup tracks	Hold down the UNGROUP button then press the SELECT BUTTON of any track in the group you wish to ungroup.
SUSPEND	-	To temporarily suspend a track group (without removing it altogether)	Hold down the SUSPEND button then press the SELECT BUTTON of any track in a non-suspended group. The name will change to "----" and the grouped behaviour of that set of faders will be suspended.
SEQ. EDIT	-	Sequence Editor	The Track Overview, Sequence Editor and Mixing Board will all scroll and show and hide tracks as necessary to keep the on-screen view in sync with the tracks displayed in the Mackie Control track strips.
SNDBITES	SHIFT	Open Soundbites window	
MOVIE	CONTROL	Open Movie window	
SN.BACK	OPTION	Pushes the front-most window to the back.	
CLOSE W.	COMMAND	Closes the front-most window.	
OVERVIEW	-	Track Overview	The Track Overview, Sequence Editor and Mixing Board will all scroll and show and hide tracks as necessary to keep the on-screen view in sync with the tracks displayed in the Mackie Control track strips.
CHUNKS	SHIFT	Open Chunks window	
SN.BACK	OPTION	Pushes the front-most window to the back.	
CLOSE W.	COMMAND	Closes the front-most window.	
MIXBOARD	-	Mixing Board	The Track Overview, Sequence Editor and Mixing Board will all scroll and show and hide tracks as necessary to keep the on-screen view in sync with the tracks displayed in the Mackie Control track strips.
SN.BACK	OPTION	Pushes the front-most window to the back.	
CLOSE W.	COMMAND	Closes the front-most window.	

ZONE F - COMMANDS

Name	Modifiers	Function	Notes
CLICK	-	Click	
F3	SHIFT	Send the F keyboard shortcut listed.	You can assign these F Keys to any command in DP's Commands window.
COUNTOFF	-	Countoff	
F4	SHIFT	Send the F keyboard shortcut listed.	You can assign these F Keys to any command in DP's Commands window.
OVERDUB	-	Overdub	
F5	SHIFT	Send the F keyboard shortcut listed.	You can assign these F Keys to any command in DP's Commands window.
P.THRU	-	Patch Thru	
F6	SHIFT	Send the F keyboard shortcut listed.	You can assign these F Keys to any command in DP's Commands window.
CLR.CLIP	-	Clear clip	
F7	SHIFT	Send the F keyboard shortcut listed.	You can assign these F Keys to any command in DP's Commands window.
EXT SYNC	-	Slave to Ext Sync	
F8	SHIFT	Send the F keyboard shortcut listed.	You can assign these F Keys to any command in DP's Commands window.
MEM.LINK	-	To toggle both Memory Link modes together	
F9	SHIFT	Send the F keyboard shortcut listed.	You can assign these F Keys to any command in DP's Commands window.
L.M.SEL.	OPTION	To toggle just Link Memory to Selection	
L.P.MEM.	COMMAND	To toggle just Link Playback to Memory	
PRE/POST	-	To toggle both pre and post roll	The PRE/POST ROLL button toggles both pre and post roll (one of the above modes must be on).
F10	SHIFT	Send the F keyboard shortcut listed.	You can assign these F Keys to any command in DP's Commands window.
PRE-ROLL	OPTION	To toggle just pre-roll	
PST-ROLL	COMMAND	To toggle just post-roll	

ZONE G - MODIFIERS

Name	Modifiers	Function	Notes
SHIFT	-		
CONTROL	-		
OPTION	-		
COMMAND	-		

ZONE H - AUTOMATION

Name	Modifiers	Function	Notes
READ/OFF	-	Displays the READ/OFF automation mode for the tracks.	Pressing the track SELECT button sets the track to the selected mode.
TOUCH	-	Displays the TOUCH automation mode for the tracks.	Pressing the track SELECT button sets the track to the selected mode.
T.TOUCH	-	Displays the TRIM TOUCH automation mode for the tracks.	Pressing the track SELECT button sets the track to the selected mode.
OVER.WR	-	Displays the OVERWRITE automation mode for the tracks.	Pressing the track SELECT button sets the track to the selected mode.
LATCH	-	Displays the LATCH automation mode for the tracks.	Pressing the track SELECT button sets the track to the selected mode.
T.LATCH	-	Displays the TRIM LATCH automation mode for the tracks.	Pressing the track SELECT button sets the track to the selected mode.

ZONE I - UTILITIES

Name	Modifiers	Function	Notes
SAVE	-		
AUDIBLE	-		
UNDO	-		
F11	SHIFT	Send the F keyboard shortcut listed.	You can assign these F Keys to any command in DP's Commands window.
REDO	-		
F12	SHIFT	Send the F keyboard shortcut listed.	You can assign these F Keys to any command in DP's Commands window.

ZONE J - TRANSPORT

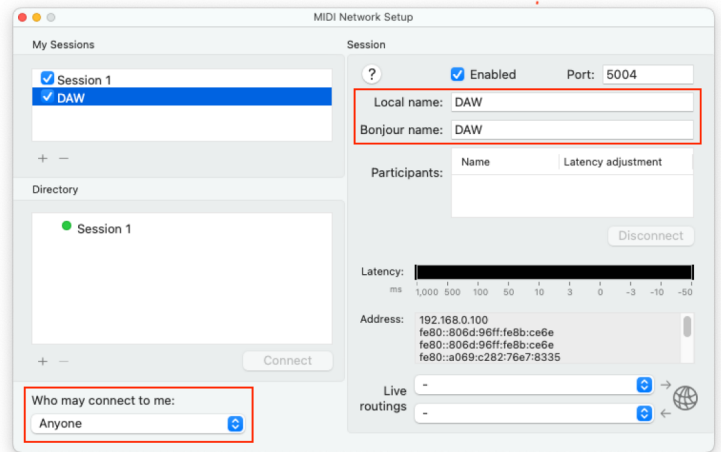
Name	Modifiers	Function	Notes
RTZ	-	The RTZ button rewinds to the beginning of the sequence.	
◀ MARKER ▶	-		When this button is pressed, the REWIND and FAST FWD buttons scroll to the previous and next marker, respectively.
MRK.WIN.	SHIFT	To open the Markers window	
PANEL	CONTROL	To bring the Control Panel to the front	
ED.GRID	-	Toggles the Edit Grid	
SNAP W.	SHIFT	Open the Snap Information window	You might find it helpful to open the Snap Information window because it allows you to see the current nudge amount.
↑ CYCLE ↓	-	To set the start point	
END	SHIFT	To set the end point	
TOGGLE	CONTROL	To toggle the mode	
↑ PUNCH ↓	-	To set the start point	
END	SHIFT	To set the end point	
TOGGLE	CONTROL	To toggle the mode	
↑ SELECT ↓	-		
SOLO	-		
REWIND	-	To engage Digital Performer's slow-rewind	Pressed twice: • to engage fast-forward and fast-rewind. Continue to press them to toggle between these two modes.
LEFT	MARKER	Go to the previous marker	
F.FWD	-	To engage Digital Performer's slow-forward	Pressed twice: • to engage fast-forward and fast-rewind. Continue to press them to toggle between these two modes.
RIGHT	MARKER	Go to the next marker	
STOP	-	Press the STOP button to stop.	
PLAY	-		
RECORD	-		

◀ BANK ▶	-	Scroll left and right eight tracks at a time.	
BEGIN/END	SHIFT	To immediately scroll all the way left or right	
◀ CHANNEL ▶	-	Scroll one track at a time.	
BEGIN/END	SHIFT	To immediately scroll all the way left or right	
CURSOR ← →	-	Scroll mode: • Scroll left or right Zoom mode: • Zoom out or in horizontally Nudge mode: • Nudge any currently selected data by the current nudge amount.	The ARROW buttons operate in three different modes shown in the table below. You can cycle through the three modes by repeatedly pressing the ZOOM button in the center of the four ARROW buttons: 1. Scroll mode 2. Zoom mode 3. Nudge mode
	SHIFT	Scroll and Zoom mode: • To scroll the window as far as it can go.	
	CONTROL	Left arrow: • Erase take Right arrow: • New take	Record-enable the track or tracks you wish to work with.
	OPTION	Scroll mode: • To “zoom back”. Nudge mode: • To nudge by the current nudge unit value (which may match the nudge amount).	
	SHIFT+OPTION	Scroll mode: • To “zoom normal”.	
CURSOR ↑ ↓	-	Scroll mode: • Scroll up or down Zoom mode: • Zoom in or out vertically Nudge mode: • Modify the nudge value.	
	SHIFT	Scroll and Zoom mode: • To scroll the window as far as it can go. Nudge Mode: • Modify the edit grid size	
	CONTROL	Up arrow: • Previous take Down arrow: • Next take	Record-enable the track or tracks you wish to work with.
	OPTION	Scroll mode: • To “zoom back”. Nudge mode: • Modify the nudge unit.	
	COMMAND	To change the currently selected track.	
	SHIFT+OPTION	Scroll mode: • To “zoom normal”.	
	COMMAND+SHIFT	To add the next track above or below the current set of selected tracks.	
	COMMAND+OPTION	To remove the top or bottom track from the current set of selected tracks.	
ZOOM	-		
JOG WHEEL	-		The Jog wheel can scrub in any editor window with a wiper, any pop-edited soundbite, and the Waveform Editor. Press the SCRUB button to engage the jog wheel. In scrub mode, the front-most window in Digital Performer determines what the jog wheel does.
	SCRUB	To engage the job wheel	
	SHIFT	To define the selection while scrubbing	Refine your selection by bouncing back and forth between the edges of your selection using the Left/Right ARROW keys and continue to scrub holding the SHIFT key.
	COMMAND	Hi-resolution scrubbing	If you hold down the COMMAND button while scrubbing, you get hi-resolution scrubbing, regardless of zoom level.
SCRUB	-		

Setup

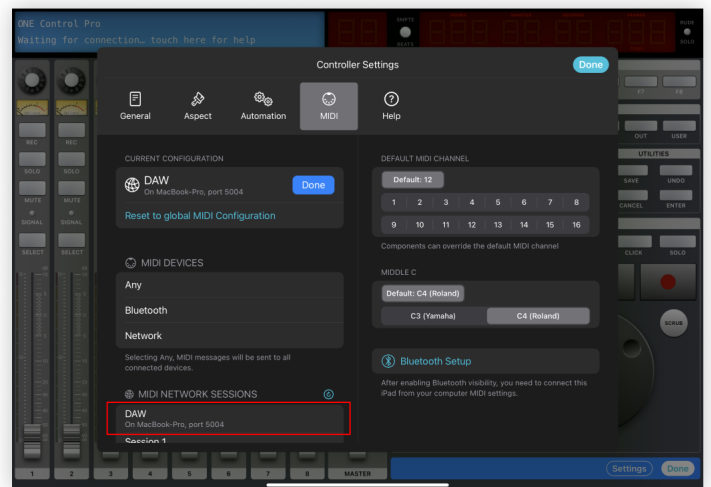
Create a dedicated MIDI Network Session

1. On your Mac open Audio MIDI Setup app
2. Open MIDI Network Setup window from MIDI Studio Menu
3. Create a new Session and call it "DAW"
(Fill in both the Local Name and Bonjour Name)
4. Double check that the newly created session is Enabled (Checkbox ticked)
5. Double check that "Who may connect to me" is set to Anyone



Configure your controller

1. On ONE Control add a new Digital Performer controller
2. Inside the controller tap Edit
3. Tap Settings
4. Select the MIDI Setup panel
5. Tap Edit to configure your MIDI connection
6. In the MIDI Network Sessions list, select DAW
7. Close the controller's settings dialog
8. Tap Done to exit controller's editing Mode



Configure Digital Performer

1. Go to Setup > Control Surface Setup...
2. Click the '+' Button to add a new controller
3. Choose Mackie Control as Driver
4. Set Unit as Mackie Control or Extender accordingly
5. Select Input Port and Output Port as DAW (Session name)
6. Add more extenders by pressing the '+' again if needed
7. Press Ok and exit preferences

