



ONE Control



Studio One

Cheat Sheet

ONE Control+
Version 1.3.3

REC

SOLO

MUTE

SIGNAL

SELECT

dB

1

REC

SOLO

MUTE

SIGNAL

SELECT

dB

2

REC

SOLO

MUTE

SIGNAL

SELECT

dB

3

REC

SOLO

MUTE

SIGNAL

SELECT

dB

4

REC

SOLO

MUTE

SIGNAL

SELECT

dB

5

REC

SOLO

MUTE

SIGNAL

SELECT

dB

6

REC

SOLO

MUTE

SIGNAL

SELECT

dB

7

REC

SOLO

MUTE

SIGNAL

SELECT

dB

8

ASSIGN

TRACK

PAN

EQ

SEND

PLUG-IN

INSTR.

NAME/VAL

GLOBAL

FLIP

C

MASTER

SMPT

BEATS

HOURS

MINUTES

SECONDS

FRAMES

RUDE

SOLO

FUNCTIONS

F1

F2

F3

F4

F5

F6

F7

F8

GLOBAL VIEW

MIDI

INPUTS

AUDIO

INSTR.

AUX

BUS

OUT

USER

MODIFIERS

SHIFT

OPTION

CONTROL

CMD/ALT

AUTOMATION

READ/OFF

TOUCH

LATCH

GROUP

TRIM

UTILITIES

SAVE

CANCEL

UNDO

ENTER

TRANSPORT

MARKER

NUDGE

CYCLE

DROP

REPLACE

CLICK

SOLO

←

→

□

▶

●

BANK

CHANNEL

↑

↓

←

→

Q

SCRUB

J

Studio One | ⓘ ? ! Edit ✕

ZONE A - MAIN LCD

Name	Modifiers	Function	Notes
DISPLAY	-	Main Liquid Crystal Display (LCD)	The main LCD is divided into eight columns, each with two lines of text. Each column displays information for the channel strip controls directly below it. In general, the upper row of each column displays the abbreviated track (or channel) name, and the lower row displays the abbreviated parameter name and its value.

ZONE B - CHANNEL STRIP (1-8)

Name	Modifiers	Function	Notes
V-Pot	-	Changes the assigned parameter (see "Assignment Buttons" section). Push to set the default value or toggle (On/Off) parameter.	
VU-Meter	-	Shows the level of the channel output (in dB)	
REC	-	Arms the assigned audio track of the channel.	
MUTE	-	Mutes the channel (with Momentary mode).	
SOLO	-	Solos the channel (with Momentary mode).	
SIGNAL	-	Shows the signal activity of the channel output	
SELECT	-	Sets the channel to the select state.	
FADER	-	Controls the volume level of the track	

ZONE C - MASTER

Name	Modifiers	Function	Notes
DISPLAY	-	Assignment display	The Assignment display (also referred to as the mode display), to the right of the main LCD, shows a two-digit abbreviation for the current assignment state.
TRACK	-	Modify track parameters of the selected channel	Bypass all plug-ins. Monitoring on/off. Select channel input. Select channel output. Bypass sends 1-4.
SEND	-	Assigns V-Pot to Sends	"SE" displays all Sends per selected channel. "S1-8" displays Send slot 1 to 8 on all channels. Press Send several times to step through the layers.
PAN	-	Shows the track names in the LCD strip and assigns V-Pots to Channel Pan	
PLUG-IN	-	Sets the V-Pots to Control Link mode	
EQ	-	Bypass for insert 1-8 of the selected channel	
INSTR.	-	Currently unassigned	
NAME/VAL	-		
GLOBAL	-	Shows all Studio One channels (inputs, mixer and outputs)	
FLIP	-	Flips the V-Pots with their corresponding faders	
FADER	-	Adjust Master volume	

ZONE D - TIMECODE

Name	Modifiers	Function	Notes
SMPTE/BEATS	-	Switch between SMPTE and beat format in clock display	
DISPLAY	-	Time display	The Time display, to the right of the Assignment display, shows the current playhead position, either in musical time divisions (BEATS) or in SMPTE timecode format (SMPTE). A small LED to the left of the display indicates the current display format. <ul style="list-style-type: none"> When the format is set to Beats, the four segments of the Time display show the current playhead position as bars, beats, beat subdivisions, and ticks. When the format is set to SMPTE, the four segments of the Time display show the current playhead position as hours, minutes, seconds, and frames.
RUDE SOLO	-	Solo Led	The Solo LED (Rude Solo on the Mackie Control) is lit when a channel strip is set to solo or when Solo mode is turned on. It is a helpful reminder in situations where you have soloed a channel strip, then switched the fader bank, resulting in the Solo LED of the soloed channel strip being hidden on the control surface

ZONE E - FUNCTIONS

Name	Modifiers	Function	Notes
F1	-	Show Inputs	Function keys can be modified using the device editor
F2	-	Show Track	
F3	-	Console	
F4	-	Open Channel	
F5	-	Add Insert	
F6	-	Add Send	
F7	-	Show Channel Editor	
F8	-	Toggle Floating Window	

ZONE F - GLOBAL VIEW

Name	Modifiers	Function	Notes
MIDI		Currently unassigned	
INPUTS		Currently unassigned	
AUDIO	-	Displays audio-track channels	
INSTR.	-	Displays Instrument output channels	
FX	-	Displays FX channels	
BUS	-	Displays Buses	
OUT	-	Displays Outputs	
REMOTE	-	Displays all remote bank channels	

ZONE G - MODIFIERS

Name	Modifiers	Function	Notes
SHIFT	-		
OPTION	-		
CONTROL	-		
CMD/ALT	-		

ZONE H - AUTOMATION

Name	Modifiers	Function	Notes
READ/OFF	-	Toggle Automation on or off for the selected channel	
WRITE	-	Set selected track's automation to Write	
TRIM		Currently unassigned	
TOUCH	-	Set selected track's automation to Touch	
LATCH	-	Set selected track's automation to Latch	
GROUP		Currently unassigned	

ZONE I - UTILITIES

Name	Modifiers	Function	Notes
SAVE	-	Press the Save button to save	Press SHIFT + SAVE button to open the Save As dialog.
SAVE AS	SHIFT	Open the Save As dialog	
UNDO	-	Press to undo last edit	Press SHIFT + UNDO to redo edit
REDO	SHIFT	Redo	
CANCEL	-		
ENTER	-		

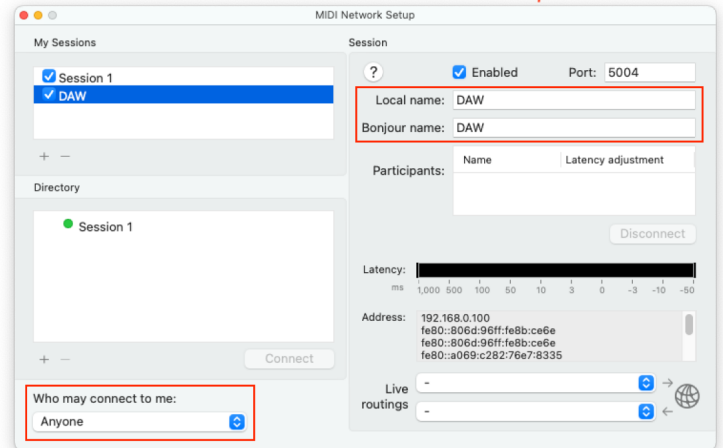
ZONE J -TRANSPORT

Name	Modifiers	Function	Notes
MARKER	-	Enable Marker mode	
NUDGE	-		
CYCLE	-	Activate/deactivate Cycle mode	
DROP	-	Activate/deactivate Autopunch mode	
REPLACE	-	Activate/deactivate Replace mode	
CLICK	-	Activate/deactivate metronome click	
SOLO	-	Activate/deactivate Solo Lock function	
REWIND	-	Shuttle rewind	
PREV	MARKER	Jumps to previous Marker	
F.FWD	-	Shuttle forward	
NEXT	MARKER	Jumps to next Marker	
STOP		Stop	
PLAY		Play	
RECORD		Record	
INSERT	MARKER	Inserts a marker at the cursor position	
◀ BANK ▶		Shift fader bank LEFT/RIGHT by number of channel strips	
◀ DEVICE ▶	OPTION	Selects previous and next device in an open plug-in editor	
◀ CHANNEL ▶		Shift fader bank LEFT/RIGHT by one channel	
◀ PRESET ▶	OPTION	Selects previous and next preset in an open plug-in editor	
ARROWS		Cursor Keys navigate the arrangement (depending on current window focus).	Horizontal and vertical zoom when zoom button is enabled. Can be used to navigate in the Insert/Send list and can be combined with Enter/Cancel to add plug-ins or sends.
ZOOM		Enable/disable Zoom mode	
JOG WHEEL		Jumps to the nearest bar in the Arrangement (no scrub support).	
SCRUB		Not supported	

Setup

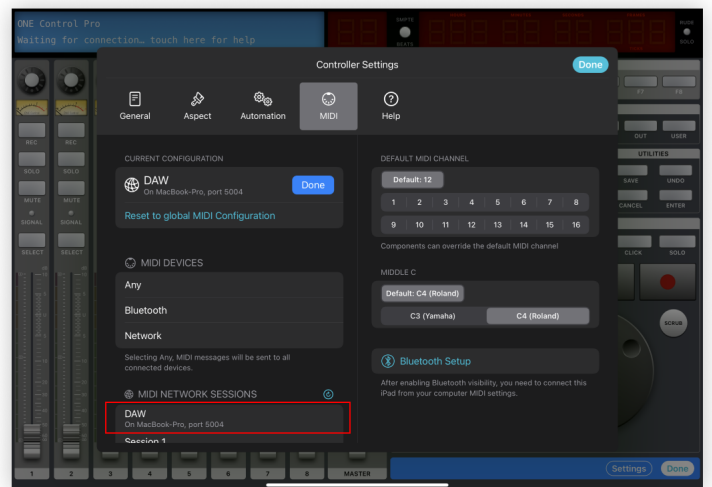
Create a dedicated MIDI Network Session

1. On your Mac open Audio MIDI Setup app
2. Open MIDI Network Setup window from MIDI Studio Menu
3. Create a new Session and call it "DAW"
(Fill in both the Local Name and Bonjour Name)
4. Double check that the newly created session is Enabled (Checkbox ticked)
5. Double check that "Who may connect to me" is set to Anyone



Configure your controller

1. On ONE Control add a new Studio One controller
2. Inside the controller tap Edit
3. Tap Settings
4. Select the MIDI Setup panel
5. Tap Edit to configure your MIDI connection
6. In the MIDI Network Sessions list, select DAW
7. Close the controller's settings dialog
8. Tap Done to exit controller's editing Mode



Configure Studio One

1. Open Studio One
2. Open Preferences, External Devices
3. Add a Mackie Control device
4. Press Edit
5. Select DAW (Network session name) in Receive From and Send To
6. Press Ok and Exit Preferences

