



Cheat Sheet



ZONE A - MAIN LCD

Name	Modifiers	Function	Notes
DISPLAY	-	Main Liquid Crystal Display (LCD)	The main LCD is divided into eight columns, each with two lines of text. Each column displays information for the channel strip controls directly below it. The information displayed changes when you edit different parameters and when Mixer view or Channel view is active. In general, the upper row of each column displays the abbreviated track (or channel) name, and the lower row displays the abbreviated parameter name and its

ZONE B - CHANNEL STRIP (1-8)

Name	Modifiers	Function	Notes
V-Pot	-	Modify parameter displayed in LCD	
VU-Meter	-	Shows the level of the channel output (in dB)	
REC	-	Activate/deactivate Record Enable button of track	
SOLO	-	Activate/deactivate Solo button of track's channel strip	
MUTE	-	Activate/deactivate Mute button of track's channel strip	
SIGNAL	-	Shows the signal activity of the channel output	
SELECT	-	Select channel strip	
FADER	-	Adjust volume	

ZONE C - VPOT ASSIGN

Name	Modifiers	Function	Notes
ASSIGN 1	-	If you press the Assign 1 button, the rotaries control the sends.	Thor: There are two variations: Filters and Osc & Mod - you select variation by pressing Assignment buttons. D Subtractor: Filter Redrum: Pitch
ASSIGN 2	-		D Subtractor: Amp & Osc" D Malström: Osc/Mod B Redrum: Length
PAN	-	If you press the Pan/Surround button they control pans.	D Malström: Filter
AUX	-	Aux Returns	Redrum: Send 1
TREBLE	-	Treble cut/boost	Redrum: Tone/Sample Start/Pitch Bend Amount
BASS	-	Bass cut/boost	Redrum: Velocity Sensitivity
NAME/VAL	-	Pressing the Name/Value button will make the display show the names of the Reason parameters controlled by the faders instead. Press the button again to show the device name.	
NORM	-	To return to the normal mapping, press Global View (next to the Flip button).	
FLIP	-	Pressing the Flip button swaps the functions of the faders and the rotaries.	Selecting another target device automatically resets Flip state and display mode to default settings.
FADER	-	Adjust Master volume	

ZONE D - TIMECODE

Name	Modifiers	Function	Notes
SMPTE/BEATS	-	Switch between SMPTE and beat format in clock display	
DISPLAY	-	Time display	The Time display, to the right of the Assignment display, shows the current playhead position, either in musical time divisions (BEATS) or in SMPTE timecode format (SMPTE). A small LED to the left of the display indicates the current display format. <ul style="list-style-type: none"> When the format is set to Beats, the four segments of the Time display show the current playhead position as bars, beats, beat subdivisions, and ticks. When the format is set to SMPTE, the four segments of the Time display show the current playhead position as hours, minutes, seconds, and frames.
RUDE SOLO	-	Solo Led	The Solo LED (Rude Solo on the Mackie Control) is lit when a channel strip is set to solo or when Solo mode is turned on. It is a helpful reminder in situations where you have soloed a channel strip, then switched the fader bank, resulting in the Solo LED of the soloed channel strip being hidden on the control surface

ZONE E - FUNCTIONS

Name	Modifiers	Function	Notes
P1	-	Pattern select buttons.	D Matrix: Buttons P1-P8 select pattern. The Select button for channel 1 controls the Pattern Enable switch.
P2	-	Pattern select buttons.	
P3	-	Pattern select buttons.	
P4	-	Pattern select buttons.	
P5	-	Pattern select buttons.	
P6	-	Pattern select buttons.	
P7	-	Pattern select buttons.	
P8	-	Pattern select buttons.	

ZONE F - GLOBAL VIEW

Name	Modifiers	Function	Notes
BANK A	-	Select Bank A.	
BANK B	-	Select Bank B.	
BANK C	-	Select Bank C.	
BANK D	-	Select Bank D.	
RUN	-		
BUS	-	Currently unassigned	
◀ PATCH	-	Scroll to patches on left.	
PATCH ▶	-	Scroll to patches on right.	

ZONE G - MODIFIERS

Name	Modifiers	Function	Notes
SHIFT	-		
OPTION	-		
CONTROL	-		
CMD/ALT	-		

ZONE H - AUTOMATION

Name	Modifiers	Function	Notes
RESET	-	Reset Automation Override	
WRITE	-	Set selected track's automation to Write	
UNDO	-	Undo last action	
TOUCH	-	Set selected track's automation to Touch	
LATCH	-	Set selected track's automation to Latch	
REDO	-	Redo last action	

ZONE I - UTILITIES

Name	Modifiers	Function	Notes
A.MUTE	-	Mute off for all tracks (lights up when any track is muted)	
A.SOLO	-	Solo off for all tracks (lights up when any track is soloed)	
T.MUTE	-	Mute on/off for the current target track	
T.SOLO	-	Solo on/off for the current target track	

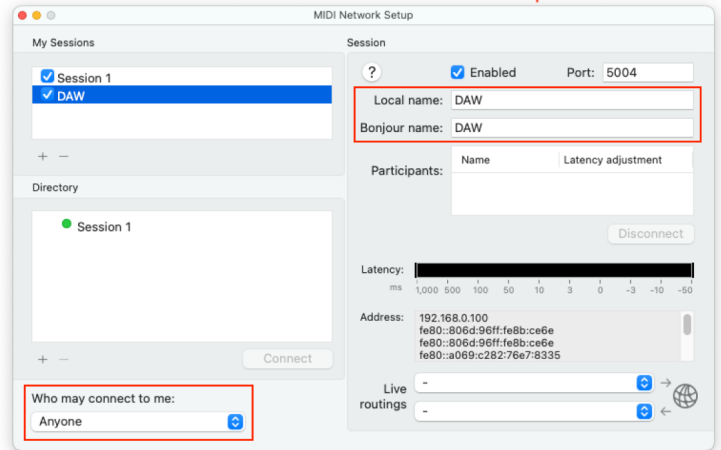
ZONE J -TRANSPORT

Name	Modifiers	Function	Notes
◀ LOCATOR	-	Go to left locator	
LOCATOR ▶	-	Go to right locator	
S. POS.	-	Jog wheel controls song position (default).	
◀ POS.	-	Jog wheel controls left locator position.	
POS. ▶	-	Jog wheel controls right locator position.	
LOOP	-	Loop On/Off	
CLICK	-	Click On/Off	
REWIND	-	Shuttle rewind	
F.FWD	-	Shuttle forward	
STOP	-	Stop	
PLAY	-	Play	
RECORD	-	Record	
◀ BANK ▶	-		
◀ CHANNEL ▶	-	The Channel Left/Right buttons determine which channels should be controlled (1-8 or 9-14).	Alternatively you can press the Select button for a channel - the rotaries will then control all sends, EQ and pan for the selected channel only. The assignment display shows the number of the selected channel. To return to normal mixer mode, press the Select button again. Redrum: Use the Channel Left/Right buttons to select which drum channels should be controlled (1-8 or 9-10). Use the Channel Left/Right buttons to select which drum channels should be controlled (1-8 or 9-10). You can audition the drum sounds with the Select buttons. BV-512 Vocoder: The faders control the band levels - use the Channel Left/Right buttons to select which vocoder bands to control.
CURSOR ← →	-	Go to previous/next bar	
CURSOR ↑ ↓	-	Target previous/next track (moves master keyboard input up or down in the track list).	
ZOOM	-	Jog wheel moves position in coarse steps (default).	
JOG WHEEL	-	Moves the song position, or the position of the left or right locator.	
SCRUB	-	Jog wheel moves position in fine steps.	

Setup

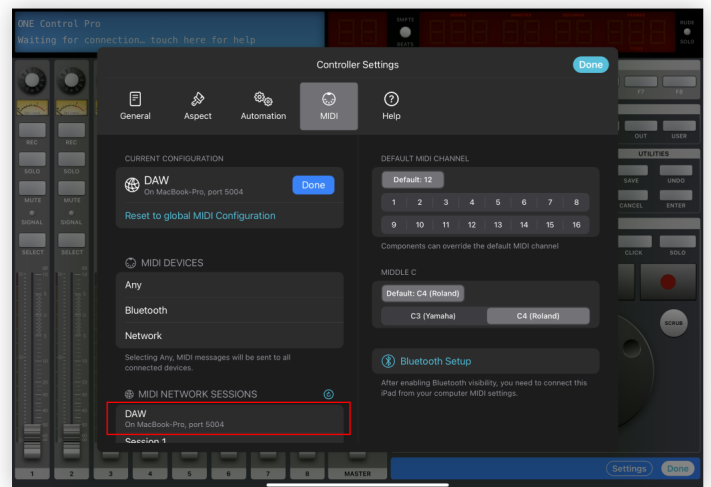
Create a dedicated MIDI Network Session

1. On your Mac open Audio MIDI Setup app
2. Open MIDI Network Setup window from MIDI Studio Menu
3. Create a new Session and call it "DAW"
(Fill in both the Local Name and Bonjour Name)
4. Double check that the newly created session is Enabled (Checkbox ticked)
5. Double check that "Who may connect to me" is set to Anyone



Configure your controller

1. On ONE Control add a new Reason controller
2. Inside the controller tap Edit
3. Tap Settings
4. Select the MIDI Setup panel
5. Tap Edit to configure your MIDI connection
6. In the MIDI Network Sessions list, select DAW
7. Close the controller's settings dialog
8. Tap Done to exit controller's editing Mode



Configure Reason

1. Open Reason
2. Open Preferences
3. Go to the Control Surfaces Tab
4. Enable Network Sessions: DAW and Session 1
5. Add a controller by pressing: Add manually
6. Choose Mackie for Manufacturer
7. Choose Control for Model
8. Select DAW (Session name) for Input and Output
9. Press Ok and exit preferences

