



ONE Control



Vegas

Cheat Sheet

ONE Control+
Version 1.5.0

A

1

2

3

4

5

6

7

8

REC

SOLO

MUTE

SIGNAL

SELECT

dB

10

5

0

-5

-10

-15

-20

-25

-30

-35

-40

-45

-50

-55

-60

-65

-70

-75

-80

-85

-90

-95

-100

ASSIGN

OUT/COMP

IN/BLUR

PAN/FADE

SENDS

INSERTS

SETTINGS

METERS

VIDEO

FLIP

C

MASTER

SMPT

BEATS

HOURS

MINUTES

SECONDS

FRAMES

RUDE

SOLO

D

FUNCTIONS

MRK 1/9

MRK 2/10

MRK 3/11

MRK 4/12

MRK 5/13

MRK 6/14

MRK 7/15

MRK 8/16

COMMANDS

ADD TRACK

ADD BUS

MIXER

V. PREVIEW

PLUG-IN

BUS TRACKS

DOCK AREA

TRACK LIST

MODIFIERS

SHIFT

CONTROL

OPTION

COMMAND

G

AUTOMATION

AUTO

BYPASS FX

METRON.

SURROUND

DOWNMIX

DIM

H

UTILITIES

SAVE

UNDO

CANCEL

ENTER

I

TRANSPORT

MARKER

REGION

LOOP

MARK IN

MARK OUT

EVENT TRIM

RTZ

Bank

Channel

Scrub

J

V

Vegas

?

!

Edit

X

ZONE A - MAIN LCD

Name	Modifiers	Function	Notes
DISPLAY	-	Main Liquid Crystal Display (LCD)	<p>The main LCD is divided into eight columns, each with two lines of text. Each column displays information for the channel strip controls directly below it. The information displayed changes when you edit different parameters and when Mixer view or Channel view is active. In general, the upper row of each column displays the abbreviated track (or channel) name, and the lower row displays the abbreviated parameter name and its value.</p> <p>In some modes, a long parameter name (or other text) appears briefly onscreen while you are moving the corresponding control. You can set the display and duration of long parameter names in Control Surfaces Pro User Guide.</p> <p>Note: On the LCD, 8-bit ASCII characters such as curly quotes and umlauts are replaced with the best-possible 7-bit ASCII equivalent.</p>

ZONE B - CHANNEL STRIP (1-8)

Name	Modifiers	Function	Notes
V-Pot	-	Adjusts values for panning, volume (when Flip button is selected), and effect parameter values.	<p>Pressing FLIP: control volume.</p> <p>Adjusts track volume when the PAN or SENDS button is selected and the FLIP button is selected.</p> <p>Adjusts audio track panning when the PAN button is selected.</p> <p>Adjusts bus send levels when the SENDS button is selected.</p> <p>Adjusts effect parameters when the INSERTS button is selected.</p> <p>When the PAN or SENDS button is selected, press the V-Pot to edit the track or bus effects chain.</p>
VU-Meter	-	Indicates whether an audio track or bus is outputting a signal.	
REC	-	Arms audio tracks for recording.	
MUTE	-	Press to mute or unmute a track.	
SOLO	-	Press to solo a track or remove it from the solo group.	
SIGNAL	-	Shows the signal activity of the channel output	
SELECT	-	Press to select a track.	
FADER	-	Adjusts the track or bus level (unless the Flip button is selected).	<p>When the Automation button is selected, the fader adjusts the automation envelope if the track is in Automation Write (Touch) or Automation Write (Latch) mode.</p> <p>The fader can also adjust settings for the following items when you select other buttons in the Channel section.</p>

ZONE C - MASTER

Name	Modifiers	Function	Notes
DISPLAY	-	Assignment display	
OUTPUT	-	Press the Output button to set the output device for each track or bus	Turn the V-Pot in the channel section to choose an output device and press the V-Pot to select it.
INPUT	-	Press to set the recording input device for each track	Turn the V-Pot in the channel section to choose an input device and press the V-Pot to select it.
PAN	-	Press to adjust track panning using the V-Pot in the channel section	In 5.1 surround projects, pressing the Pan button toggles left-to-right panning, front-to-rear panning, and center-channel level adjustment using the V-Pot.
SENDS	-	Press to adjust bus and assignable effects send levels	Press the Sends button to scroll through the available busses and assignable effects chains, and then turn the V-Pot to adjust the send level.

INSERTS	-	Press the button once to display PL in the Mackie Control Assignment display	<p>The Mackie Control LCD displays the effects that are assigned to each track or bus.</p> <p>Turn the V-Pot to scroll through the effects, and press the V-Pot to edit the current effect. In editing mode, PE is displayed in the Assignment display. The following example shows the settings for the Noise Gate plug-in on track one:</p> <p>PE mode uses the following controls: V-Pots 1 - 4: Turn to edit the effect's parameters. For switch parameters such as Bypass, press the V- Pot to change the setting.. V-Pot 5: Turn to scroll through an effect's property pages. V-Pot 6: Turn to choose from a plug-in's available presets. V-Pot 7: Press the V-Pot to choose a preset. V-Pot 8: Turn to edit the current effect for a different channel Turn to choose other effects for the current channel. Press the Inserts button again to view effects chains. PS is displayed in the Assignment display.</p> <p>V Pots 1, 3, 5: Turn to choose other effects for the current channel. Press to edit the selected effect and enter PE mode. 2, 4, and 6: After choosing an effect with V-Pot 1, 3, or 5, press V-Pot 2, 4, or 6 to add it to the channel. 7: If a channel has multiple pages of effects in the chain, turn to display additional effects. In the previous example, Aud 1 1/2 means that track one has two pages of effects. 8: Turn to choose effects chains for other channels.</p> <p>When <No Insert> is displayed above a V-Pot, you can turn the V-Pot to view effects that you can add to the chain. New effects are displayed with a *. Press the next V-Pot (to the right) to add the effect.</p>
SETTINGS	-	Press to adjust track or bus settings using the F1 through F6 buttons.	
METERS/VAL	-	When you're working with audio tracks or busses, press to display meters or numeric values.	<p>Even in Meters mode, numeric values are displayed when you edit a value. Hold the Shift button in the Modifiers section while pressing the Meters/Val button to toggle control of tracks, busses, or tracks and busses.</p> <p>Press once to show audio and MIDI tracks.</p> <p>Press again to show MIDI tracks.</p> <p>Press again to show busses</p> <p>Press again to show all tracks and busses</p>
TOGGLE	SHIFT		
GLOBAL	-	Currently unassigned	
FLIP	-	Press to exchange the behavior of the fader and V-Pot when allowed.	
FADER	-	Adjust Master volume	

ZONE D - TIMECODE

Name	Modifiers	Function	Notes
SMTPE/BEATS	-	Press and hold to display the current time format. Turn V-Pot 8 while holding the button to change the format.	
DISPLAY	-	Time display	
RUDE SOLO	-	Currently not implemented	

ZONE E - MARKERS

Name	Modifiers	Function	Notes
MARKER 1	-	Place to cursor to Marker 1 or 9	Press to place the cursor at marker 1, or hold Shift and press to place the cursor at marker 9.
MARKER 9	SHIFT		
AUTO	SETTINGS		When the Settings button is selected, hold the button and turn the V-Pot to change the automation recording mode for each track and bus track.
MARKER 2	-	Place to cursor to Marker 2 or 10	Press to place the cursor at marker 2, or hold Shift and press to place the cursor at marker 10.
MARKER 10	SHIFT		
PANNING	SETTINGS		When the Settings button is selected, hold the button and turn the V-Pot to change the current panning mode.
MARKER 3	-	Place to cursor to Marker 3 or 11	Press to place the cursor at marker 3, or hold Shift and press to place the cursor at marker 11.
MARKER 11	SHIFT		
TRK PHASE	SETTINGS		When the Settings button is selected, hold the button and press the V-Pot to change the track phase.
MARKER 4	-	Place to cursor to Marker 4 or 12	Press to place the cursor at marker 4, or hold Shift and press to place the cursor at marker 12.
MARKER 12	SHIFT		
INPUT M.	SETTINGS		When the Settings button is selected, hold the button and turn the V-Pot to change record input monitoring settings when you're using an ASIO audio device.

MARKER 5	-	Place to cursor to Marker 5 or 13	Press to place the cursor at marker 5, or hold Shift and press to place the cursor at marker 13.
MARKER 13	SHIFT		
BUS FX	PAN+SETTING S		When the Pan button is selected, press the Settings button and then hold MARKER 5 while pressing the V- Pot to change the bus or assignable effects output fader to Pre FX or Post FX.
BUS VOL	SENDS+SETTINGS		When the Sends button is selected, press the Settings button and hold F5 while pressing the V-Pot to change a track's bus or assignable effects send level to Pre Volume or Post Volume. Press the Sends button to scroll through the available bus and effects sends.
MARKER 6	-	Place to cursor to Marker 6 or 14	Press to place the cursor at marker 6, or hold Shift and press to place the cursor at marker 14
MARKER 14	SHIFT		
RETURN	SETTINGS		When the Settings button is selected, hold F6 while pressing the V-Pot on a channel to return the channel's settings to the track defaults.
MARKER 7	-	Place to cursor to Marker 5 or 15	Press to place the cursor at marker 7, or hold Shift and press to place the cursor at marker 15
MARKER 15	SHIFT		
MARKER 8	-	Place to cursor to Marker 8 or 16	Press to place the cursor at marker 8, or hold Shift and press to place the cursor at marker 16.
MARKER 16	SHIFT		

ZONE F - COMMANDS

Name	Modifiers	Function	Notes
ADD TRK	-	Press to add a new audio track	
ADD BUS	-	Press to add an audio bus to your project	
MIXER	-	Press to show the Mixing Console window	If the window is not docked, pressing the button shows/hides the window.
VIDEO PRV	-	Press to show the Video Preview window	If the window is not docked, pressing the button shows/hides the window.
PLUG-INS	-	Press to show the Plug-In Manager window	If the window is not docked, pressing the button shows/hides the window.
BUS TRKS	-	Press to show or hide bus tracks in the timeline	
DOCK	-	Press to show or hide the Window Docking Area at the bottom of the ACID window	
TRK LIST	-	Press to show or hide the track list in the timeline	

ZONE G - MODIFIERS

Name	Modifiers	Function	Notes
SHIFT	-	Hold the Shift button while pressing a button labeled with inverse text to perform the shift function.	For example, hold Shift while pressing the Undo/Redo button to reverse an undo action.
OPTION	-	Hold the Option/Track Order button while pressing a button in the Settings, Add New, or Windows group for alternative functions. Hold the Option/Track Order button while pressing a the Channel < or Channel > button to change track order. Hold the Option/Track Order button while pressing F1 to F16 to perform custom functions you can define. See the Configure or customize your control mappings heading in this help topic for more information.	
CTRL	-	Hold the Ctrl button while using a control for alternative functions.	
ALT	-	Hold the Alt button while using a control for alternative functions.	

ZONE H - AUTOMATION

Name	Modifiers	Function	Notes
AUTOMATION	-	Press to place the controls on the Mackie Control in automation mode	The controls in the channel section of the Mackie Control will affect the automation parameters on the track or bus if Automation Write (Touch) or Automation Write (Latch) mode is selected. When the button is not selected, the buttons control trim (static) values. Press to bypass/enable all audio effects.
BYPASS FX	-	Press to bypass/enable all audio effects.	
METRONOME	-	Press to turn the metronome on or off.	
COUNTOFF	SHIFT		Hold SHIFT and press to toggle metronome countoff.
SURROUND	-	Press to toggle the project properties between stereo and 5.1 surround mode.	
DOWNMIX	-	Press to toggle the state of the Downmix Output button in the Mixing Console window.	
DIM	-	Press to toggle the state of the Dim Output button in the Mixing Console window.	

ZONE I - UTILITIES

Name	Modifiers	Function	Notes
SAVE	-	Press to save your project.	
UNDO	-	Press to reverse edit operations.	
REDO			Hold SHIFT while pressing the button to reverse an undo operation.
CANCEL	-	Not used	
ENTER	-	Not used	

ZONE J -TRANSPORT

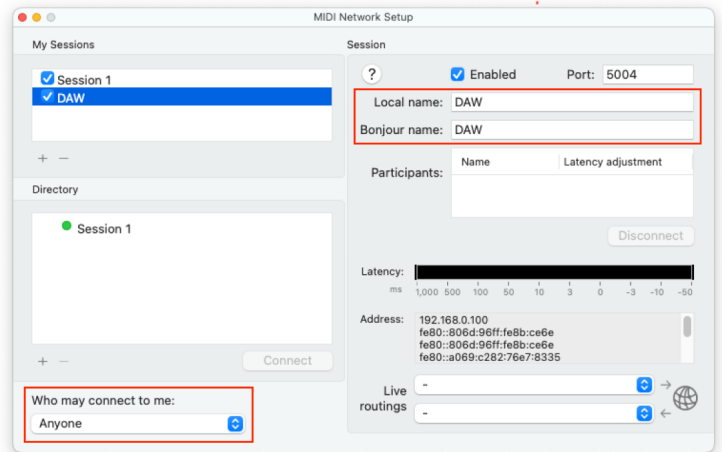
Name	Modifiers	Function	Notes
MARKER	-	Press to place a marker at the cursor position.	
REMOVE	CONTROL		Hold the CTRL button while pressing the MARKER button to remove a marker.
REGION	-	Press to convert the current selection to a region.	Hold the CTRL button while pressing the REGION button to remove a region.
REMOVE	CONTROL		
LOOP	-	Press to toggle looped playback mode.	
SELECT	SHIFT		Hold the SHIFT button while pressing the LOOP/SELECT button to create a time selection from the loop region.
MARK IN	-	Press to set the beginning of the loop region at the cursor position.	
GOTO IN	SHIFT		Hold the SHIFT button while pressing the MARK IN/GO TO IN button to move the cursor to the beginning of the loop region.
MARK OUT	-	Press to set the end of the loop region at the cursor position.	
GOTO OUT	SHIFT		Hold the SHIFT button while pressing the MARK OUT/GO TO OUT button to move the cursor to the end of the loop region.
EVENT TRIM	-		
CENTER	SHIFT		Hold the SHIFT button while pressing the EVENT TRIM/CENTER CURSOR button to center the cursor in the timeline view.
RTZ	-	Press to move the cursor to the beginning of the project.	
END	SHIFT		Hold the SHIFT button while pressing the RTZ/END button to move the cursor to the end of the project.
REWIND	-	Shuttle rewind	
F.FWD	-	Shuttle forward	
STOP	-	Press to stop playback and return the cursor to its position before playback started.	
PLAY	-	Press to start playback.	Press again to stop playback and leave the cursor at its current position.
RECORD	-	Press to start recording. Press again to stop recording and leave the cursor at its current position.	
NEW TRK	SHIFT		Hold the SHIFT button while pressing the RECORD button to render the current selection to a new track.

◀ BANK ▶	-	Press the left or right arrow button to scroll the channels 8 units at a time.	For example, if tracks 1-8 are currently displayed, pressing the right arrow will change to tracks 9-16.
◀ CHANNEL ▶	-	Press the left or right arrow button to scroll the channels 1 unit at a time.	For example, if tracks 1-8 are currently displayed, pressing the right arrow will change to tracks 2-9.
	OPTION	Change the track order	Hold the OPTION button while pressing either Channel button to change track order. For example, if track two is selected and you press OPTION + ◀ Channel, track two becomes track one. Conversely, if track one is selected and you press Option + Channel ▶, track one becomes track two.
CURSOR ← →	-	Mimic computer keyboard Left/Right Arrow keys	
CURSOR ↑ ↓	-	Mimic computer keyboard Up/Down Arrow keys	
ZOOM	-	Switch between default cursor button behavior and Zoom mode	
JOG WHEEL	-	Move the playhead forward or back	
SCRUB	-	Activate/deactivate Scrub mode	

Setup

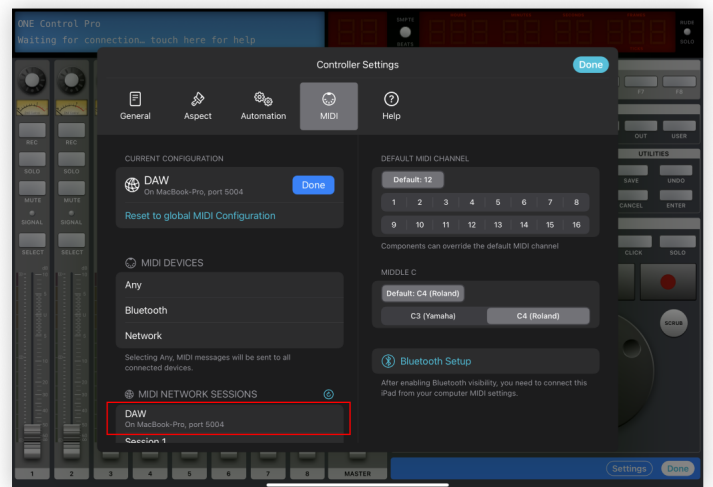
Create a dedicated MIDI Network Session

1. On your Mac open Audio MIDI Setup app
2. Open MIDI Network Setup window from MIDI Studio Menu
3. Create a new Session and call it "DAW"
(Fill in both the Local Name and Bonjour Name)
4. Double check that the newly created session is Enabled (Checkbox ticked)
5. Double check that "Who may connect to me" is set to Anyone



Configure your controller

1. On ONE Control add a new Sony Vegas controller
2. Inside the controller tap Edit
3. Tap Settings
4. Select the MIDI Setup panel
5. Tap Edit to configure your MIDI connection
6. In the MIDI Network Sessions list, select DAW
7. Close the controller's settings dialog
8. Tap Done to exit controller's editing Mode



Configure Sony Vegas

1. Go to Preferences, MIDI tab
2. Enable your MIDI input and output network ports by selecting the check boxes
3. Click Apply
4. Go to the External Control & Automation Tab
5. Choose your control surface from Available Devices: Mackie Control
6. Click the Add button
7. This will load its default profile
8. Choose Device Type
9. Select MIDI Input and Output sessions
10. Click OK and close Preferences