



# Nuendo

The screenshot displays the Nuendo software interface with a custom overlay. The overlay consists of a grid of colored rectangles, each containing a letter from A to J. The letters are placed as follows:

- A:** Top left, blue rectangle.
- B:** Middle left, orange rectangle.
- C:** Middle center, green rectangle.
- D:** Top right, red rectangle.
- E:** Middle right, cyan rectangle.
- F:** Below E, blue rectangle.
- G:** Below F, dark blue rectangle.
- H:** Below G, purple rectangle.
- I:** To the right of H, purple rectangle.
- J:** Bottom right, dark purple rectangle.

The background shows the Nuendo interface with various controls and meters. The top bar includes the text "ONE Control+ Version 1.5.0". The main area features eight channels, each with a fader, a solo button, a mute button, and a signal button. The bottom of the interface shows the Nuendo logo and a row of icons for various functions.

## ZONE A - MAIN LCD

Name	Modifiers	Function	Notes
<b>DISPLAY</b>	-	Main Liquid Crystal Display (LCD)	The main LCD is divided into eight columns, each with two lines of text. Each column displays information for the channel strip controls directly below it. In general, the upper row of each column displays the abbreviated track (or channel) name, and the lower row displays the abbreviated parameter name and its value.

## ZONE B - CHANNEL STRIP (1-8)

Name	Modifiers	Function	Notes
<b>V-Pot</b>	-	Modify parameter displayed in LCD	
<b>VU-Meter</b>	-	Shows the level of the channel output (in dB)	
<b>REC</b>	-	To enable/disable a track for recording	
<b>MUTE</b>	-	To mute a channel	
<b>SOLO</b>	-	To solo a channel	In Listen mode: • To activate/deactivate the Listen mode for a channel
<b>SIGNAL</b>	-	Shows the signal activity of the channel output	
<b>SELECT</b>	-	To select a single channel	
<b>FADER</b>	-	Adjust volume	

## ZONE C - MASTER

Name	Modifiers	Function	Notes
<b>DISPLAY</b>	-	Assignment display	The Assignment display (also referred to as the mode display), to the right of the main LCD, shows a two-digit abbreviation for the current assignment state.
<b>FIRST</b>	-	To access the routing settings	Once the parameter is shown in the display, you can adjust its value by moving the corresponding V-Pot. When you move the V-Pot, the display will switch to show the parameter values instead of the parameter names.
<b>DIRECT</b>	SHIFT	To access the direct routing settings	
<b>LAST</b>	-	To access the send settings for the selected channel	Once the parameter is shown in the display, you can change page with Channel buttons then adjust its value by moving the corresponding V-Pot.
<b>GL.SEND</b>	SHIFT	To access the global send settings for the current channel set	
<b>PAN</b>	-	To activate the standard panning mode	To activate/deactivate the monitoring of channels in the current channel set, press the corresponding V-Pot.
<b>SURROUND</b>	SHIFT	To access the additional surround panning parameters for the selected channel	
<b>PLUG-IN</b>	-	To access the channel insert effects	The device displays the insert effects of the selected channel as IFX 1, IFX 2, IFX 3, and so on.
<b>EQ</b>	-	To access the equalizer settings on one page	You can set the frequency, the gain, and the Q-factor of the equalizer bands and activate/deactivate a band for the selected channel on one page.
<b>MULTI</b>	SHIFT	To access the equalizer settings on two pages	You can set the frequency, the gain, and the Q-factor of the equalizer bands and activate/deactivate a band for the selected channel separated on two pages.
<b>DYN</b>	-	To access the channel strip module settings	
<b>NAME/VAL</b>	-	View read-only parameter values	This makes the display switch to showing parameter values. Click the Name/Value button again to go back to parameter names.
<b>EDIT</b>	-	To open or close the Channel Settings window for the current channel selection	
<b>CLOSE W.</b>	SHIFT	Close the currently active window	
<b>FLIP</b>	-	To switch the functions of faders and V-Pots	
<b>FADER</b>	-	Adjust Master volume	

## ZONE D - TIMECODE

Name	Modifiers	Function	Notes
<b>SMPTE/BEATS</b>	-	To switch between Timecode and BARS+BEATS mode	
	SHIFT	To activate/deactivate the level meters in the display	
<b>DISPLAY</b>	-	Time display	<p>The Time display, to the right of the Assignment display, shows the current playhead position, either in musical time divisions (BEATS) or in SMPTE timecode format (SMPTE). A small LED to the left of the display indicates the current display format.</p> <ul style="list-style-type: none"> <li>When the format is set to Beats, the four segments of the Time display show the current playhead position as bars, beats, beat subdivisions, and ticks.</li> <li>When the format is set to SMPTE, the four segments of the Time display show the current playhead position as hours, minutes, seconds, and frames.</li> </ul>
<b>RUDE SOLO</b>	-	Solo Led	The Solo LED (Rude Solo on the Mackie Control) is lit when a channel strip is set to solo or when Solo mode is turned on. It is a helpful reminder in situations where you have soloed a channel strip, then switched the fader bank, resulting in the Solo LED of the soloed channel strip being hidden on the control surface.

## ZONE E - FUNCTIONS

Name	Modifiers	Function	Notes
<b>F1</b>	-		<p>You can use the function keys F1 to F8 and function key combinations with the Shift button to access functions in Cubase. Refer to the Cubase operation manual for information about how to assign program functions to remote controller function keys.</p>
<b>F2</b>	-		
<b>F3</b>	-		
<b>F4</b>	-		
<b>F5</b>	-		
<b>F6</b>	-		
<b>F7</b>	-		
<b>F8</b>	-		

## ZONE F - FADER GROUPS

Name	Modifiers	Function	Notes
<b>1</b>	-	Bank 1 - Channels 1-8	
ALL CH.	SHIFT	All channels	
<b>2</b>	-	Bank 2 - Channels 9-16	
AUDIO CH.	SHIFT	Audio channels	
<b>3</b>	-	Bank 3 - Channels 17-24	
GROUPS	SHIFT	Groups	
<b>4</b>	-	Bank 4 - Channels 25-32	
FX CH.	SHIFT	FX channels	
<b>5</b>	-	Bank 5 - Channels 33-40	
INSTR. CH.	SHIFT	Instrument channels	
<b>6</b>	-	Bank 6 - Channels 41-48	
MIDI CH.	SHIFT	MIDI channels	
<b>7</b>	-	Bank 7 - Channels 49-56	
I/O BUSSES	SHIFT	I/O busses	
<b>8</b>	-	Bank 8 - Channels 57-64	
ALL CH.	SHIFT	All channels	

## ZONE G - ACTIONS

Name	Modifiers	Function	Notes
<b>UNDO</b>	-	To undo the last operation in your application	To undo further operations, press UNDO again.
HISTORY	SHIFT	To open the Edit History dialog in your application	Use the up/down arrow buttons to undo one or several of the listed operations.
<b>REDO</b>	-	To restore undone operations	To restore further undone operations, press REDO again.
<b>SAVE</b>	-	To save the current project	
SAVE AS	SHIFT	To save the current project to a new version	The new file gets the same name as the original project, but with an incremental number attached.
<b>REVERT</b>	-	To revert to the last saved version of the project	In your application, you are asked whether you want to revert to the last saved version of the project. If you click Revert, all changes that you have made since saving are discarded.

## ZONE H - AUTOMATION

Name	Modifiers	Function	Notes
<b>READ</b>	-	To enable or disable the reading of automation data for the selected channel	
ALL	SHIFT	To enable or disable the reading of automation data for all channels	
<b>WRITE</b>	-	To enable or disable the recording of automation data for the selected channel	
ALL	SHIFT	To enable or disable the recording of automation data for all channels	
<b>SENDS</b>	-	To access the FX channel insert effects	For FX Channels, Mackie MCU Pro also offers direct access to the settings of the plug-ins in the first Inserts slot. The device displays the FX channels as FX 1, FX 2, FX 3, and so on.
<b>CUE SEND</b>	SHIFT	To access the cue send settings for the current channel set	The device displays the cue sends as FX Studio 1, FX Studio 2, FX Studio 3, and so on.
<b>PROJECT</b>	-	To bring the current Project Window to the front	
LISTEN	SHIFT	To enable/disable the LISTEN mode for the SOLO buttons	
<b>MIXER</b>	-	Open or close the Mixer window	
ALL CH.	SHIFT		On Listen mode: • To deactivate the Listen states for all chan
<b>MOTORS</b>	-	Switch on or off the faders' motors	

## ZONE I - UTILITIES

Name	Modifiers	Function	Notes
<b>INSTR.</b>	-	To access the VST instrument settings for a selected channel	
PARAMS	SHIFT	To access the settings for the instruments in the VST Instruments rack	
<b>MASTER</b>	-	To access the master insert effects	The device displays the master insert slots as MFX 1, MFX 2, MFX 3, and so on.
QUICK CTRL	SHIFT	To access the quick controls	To remote-control the quick controls of an instrument in the VST Instruments rack with Mackie MCU Pro, activate Set Remote-Control Focus for VST Quick Controls in the lower right corner of the instrument section in the VST Instruments window. To set the parameters of the current instrument quick controls, use the corresponding V-Pots or press the FLIP button and use the faders. If Set Remote-Control Focus for VST Quick Controls is not activated for any VST Instrument, you can control the Track Quick Controls for the selected channel in the Inspector. To set the parameters in the Track Quick Controls, use the corresponding V-Pots or press the FLIP button and use the faders.
<b>SOLO DEFEAT</b>	-	To deactivate the solo states for all channels simultaneously,	
MUTE DEFEAT	SHIFT	To deactivate the mute states for all channels simultaneously	
<b>SHIFT</b>	-		



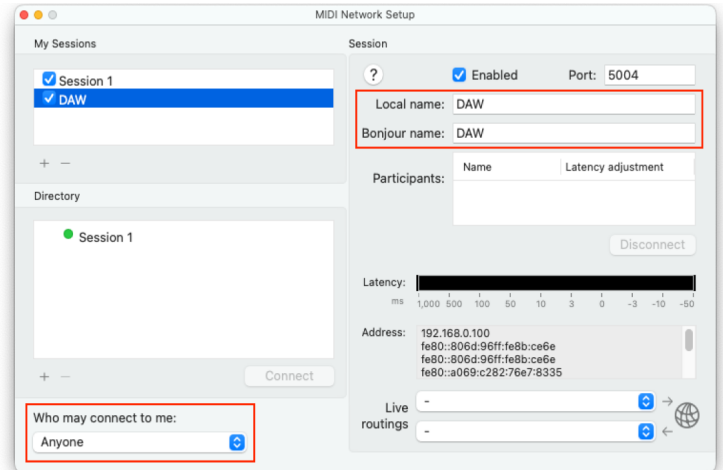
## ZONE J -TRANSPORT

Name	Modifiers	Function	Notes
<b>LEFT</b>	-	To move the project cursor to the left locator	
◀ CURR.	SHIFT	To set the left locator to the current project cursor position	
<b>RIGHT</b>	-	To move the project cursor to the right locator	
▶ CURR.	SHIFT	To set the right locator to the current project cursor position	
<b>CYCLE</b>	-	To activate/deactivate Transport Cycle mode	This setting is reflected on the Transport bar in Cubase
<b>PUNCH</b>	-	To activate/deactivate Auto Punch In	This setting is reflected on the Transport bar in Cubase
<b>PREVIOUS</b>	-	To move from the project cursor position to the previous marker position in your project	
<b>ADD</b>	-	To add a marker at the current project cursor position	
<b>NEXT</b>	-	To move from the project cursor position to the next marker position in your project	
<b>REWIND</b>	-	Shuttle rewind	
BEGIN	SHIFT	Move the project cursor to the beginning off the Project	
<b>F.FWD</b>	-	Shuttle forward	
END	SHIFT	Move the project cursor at the end of the Project	
<b>STOP</b>	-	Stop	
<b>PLAY</b>	-	Play	
<b>RECORD</b>	-	Record	
◀ BANK ▶	-	Switch from one set of eight channels to the next	
◀ CHANNEL ▶	-	To move to the next or previous Page within a parameter group	To edit a single parameter, turn the corresponding V-Pot.
	SHIFT	To directly move to the first or last available parameter page	
<b>CURSOR ← →</b>	-	Mimic computer keyboard Left/Right Arrow keys	
<b>CURSOR ↑ ↓</b>	-	Mimic computer keyboard Up/Down Arrow keys	
◀ BANK ▶	-	To switch from one set of channels to the next	
	SHIFT	To shift the channel set assignment in steps of 1 channel	
◀ CHANNEL ▶	-	Shift fader bank LEFT/RIGHT by one channel	
<b>ARROWS</b>	-	Cursor Keys navigate the arrangement (depending on current window focus).	
<b>ZOOM</b>	-	Enable/disable Zoom mode	
<b>JOG WHEEL</b>	-	Jumps to the nearest bar in the Arrangement (no scrub support).	The jog wheel will only move the project cursor position in Cubase. If you press the Scrub button above the jog wheel, the Cubase jog function will be used, i.e. you will hear playback.
<b>SCRUB</b>	-	Activate/deactivate Scrub mode	

# Setup

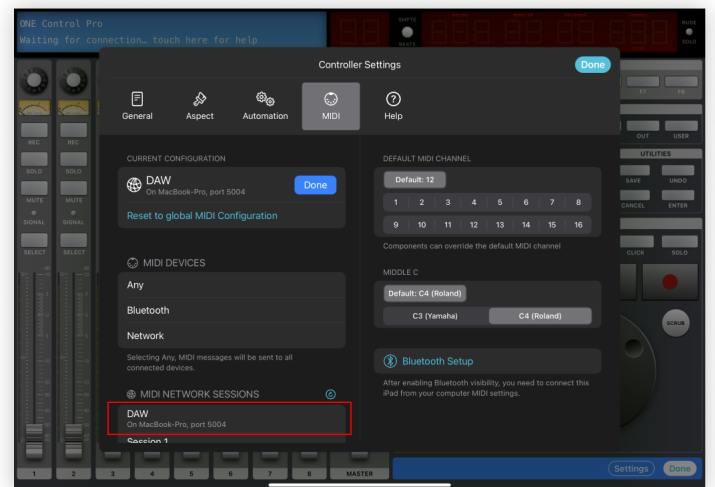
## Create a dedicated MIDI Network Session

1. On your Mac open Audio MIDI Setup app
2. Open MIDI Network Setup window from MIDI Studio Menu
3. Create a new Session and call it "DAW"  
(Fill in both the Local Name and Bonjour Name)
4. Double check that the newly created session is Enabled (Checkbox ticked)
5. Double check that "Who may connect to me" is set to Anyone



## Configure your controller

1. On ONE Control add a new Nuendo controller
2. Inside the controller tap Edit
3. Tap Settings
4. Select the MIDI Setup panel
5. Tap Edit to configure your MIDI connection
6. In the MIDI Network Sessions list, select DAW
7. Close the controller's settings dialog
8. Tap Done to exit controller's editing Mode



## Configure Nuendo

1. Open Nuendo
2. Select Devices > Device Setup > Add Device
3. In the Device Setup dialog, click + and select Mackie Control
4. Select the MIDI Input session for the Mackie Control device
5. Select the MIDI Output session for the Mackie Control device
6. Select MIDI Port Setup in the list on the left
7. On the table on the right, select DAW (Session name)
8. Deactivate the checkbox 'All MIDI Inputs' column for that input to avoid recording data from the control surface.
9. Apply changes and close Device Setup.

