



ONE Control

Waveform

# Cheat Sheet

ONE Control+  
Version 1.5.0

A

REC

SOLO

MUTE

SIGNAL

SELECT

REC

SOLO

MUTE

SIGNAL

SELECT

REC

SOLO

MUTE

SIGNAL

SELECT

REC

SOLO

MUTE

SIGNAL

SELECT

REC

SOLO

MUTE

SIGNAL

SELECT

REC

SOLO

MUTE

SIGNAL

SELECT

REC

SOLO

MUTE

SIGNAL

SELECT

REC

SOLO

MUTE

SIGNAL

SELECT

dB

10

5

0

-5

-10

-15

-20

-25

-30

-35

-40

-45

-50

-55

-60

-65

-70

-75

-80

-85

-90

-95

-100

dB

10

5

0

-5

-10

-15

-20

-25

-30

-35

-40

-45

-50

-55

-60

-65

-70

-75

-80

-85

-90

-95

-100

dB

10

5

0

-5

-10

-15

-20

-25

-30

-35

-40

-45

-50

-55

-60

-65

-70

-75

-80

-85

-90

-95

-100

dB

10

5

0

-5

-10

-15

-20

-25

-30

-35

-40

-45

-50

-55

-60

-65

-70

-75

-80

-85

-90

-95

-100

dB

10

5

0

-5

-10

-15

-20

-25

-30

-35

-40

-45

-50

-55

-60

-65

-70

-75

-80

-85

-90

-95

-100

dB

10

5

0

-5

-10

-15

-20

-25

-30

-35

-40

-45

-50

-55

-60

-65

-70

-75

-80

-85

-90

-95

-100

dB

10

5

0

-5

-10

-15

-20

-25

-30

-35

-40

-45

-50

-55

-60

-65

-70

-75

-80

-85

-90

-95

-100

dB

10

5

0

-5

-10

-15

-20

-25

-30

-35

-40

-45

-50

-55

-60

-65

-70

-75

-80

-85

-90

-95

-100

1

2

3

4

5

6

7

8

ASSIGN

PAN

AUX

PLUG-IN

MARKER

PAGE L.

PAGE R.

CPU %

EDIT

FLIP

C

SMPT

HOURS

MINUTES

SECONDS

FRAMES

BEATS

RUDE

SOLO

D

FUNCTIONS

FILTERS

MASTER FLT

MARK IN

MARK OUT

CUT

COPY

PASTE

DELETE

E

UTILITIES/VIEWS

FIT ALL

ZOOM OUT

← MARKER

MARKER →

INS. TEMPO

PROJECTS

SETTINGS

EDIT

F

SHIFT

NEW MARKER

← NUDGE

NUDGE →

G

METERS

PAGES

FILTERS

SAVE

UNDO

REDO

H

SAVE

UNDO

CLEAR

FREEZE

I

TRANSPORT

LOOP

PUNCH

CLICK

SNAP

END TO END

SCROLL

MTC

←

→

□

▶

●

BANK

CHANNEL

↑

↓

←

→

Q

SCRUB

J

Waveform

?

!

Edit

×

## ZONE A - MAIN LCD

Name	Modifiers	Function	Notes
DISPLAY	-	Main Liquid Crystal Display (LCD)	

## ZONE B - CHANNEL STRIP (1-8)

Name	Modifiers	Function	Notes
V-Pot	-	The v-pot controls track volume by default but can be flipped to control track panning.	
VU-Meter	-	Shows the level of the channel output (in dB)	
REC	-	By default, this arms the track for recording in exclusion of all other tracks.	
MUTE	-	Mutes/unmutes the track nonexclusively.	
SOLO	-	Listen the channel strip in isolation	
SIGNAL	-	Shows the signal activity of the channel output	
SELECT	-	Selects the track, both in the DAW and on the Mackie Control, for various functions.	
FADER	-	Adjusts the channel level	

## ZONE C - MASTER

Name	Modifiers	Function	Notes
DISPLAY	-	Assignment display	
TRACK	-	Modify track parameters of the selected channel	
SEND	-	Assigns V-Pot to Sends	
PAN	-	Shows the track names in the LCD strip and assigns V-Pots to Channel Pan	
PLUG-IN	-	Sets the V-Pots to Control Link mode	
EQ	-	Bypass for insert 1-8 of the selected channel	
INSTR.	-	Currently unassigned	
NAME/VAL	-		
GLOBAL	-	Shows all Studio One channels (inputs, mixer and outputs)	
FLIP	-	Flips the V-Pots with their corresponding faders	
FADER	-	Adjust Master volume	

## ZONE D - TIMECODE

Name	Modifiers	Function	Notes
SMPTE/BEATS	-	When you press the SMPTE/Beats button in the Display section, the time display of Mackie Control will switch between "bars and beats" and the timecode format as selected in the project setup of Cubase.	
DISPLAY	-	Time display	
RUDE SOLO	-	Solo Led	

## ZONE E - FUNCTIONS

Name	Modifiers	Function	Notes
F1		Currently unassigned	
F2		Currently unassigned	
F3		Currently unassigned	
F4		Currently unassigned	
F5		Currently unassigned	
F6		Currently unassigned	
F7		Currently unassigned	
F8		Currently unassigned	

## ZONE F - VIEW

Name	Modifiers	Function	Notes
MIDI		Currently unassigned	
INPUTS		Currently unassigned	
AUDIO		Currently unassigned	
INSTR		Currently unassigned	
AUX		Currently unassigned	
BUS		Currently unassigned	
OUT		Currently unassigned	
USER		Currently unassigned	

## ZONE G - MODIFIERS

Name	Modifiers	Function	Notes
SHIFT	-	Switch to second function	
OPTION	-	Optional behaviour of a function	
CONTROL	-		
CMD/ALT	-		

## ZONE H - VIEWS

Name	Modifiers	Function	Notes
READ/OFF	-	Toggle Automation on or off for the selected channel	
WRITE	-	Set selected track's automation to Write	
TRIM	-	Currently unassigned	
TOUCH	-	Set selected track's automation to Touch	
LATCH	-	Set selected track's automation to Latch	
GROUP	-	Currently unassigned	

## ZONE I - FUNCTIONS

Name	Modifiers	Function	Notes
SAVE	-	Press the Save button to save	
UNDO	-	Press to undo last edit	
CANCEL	-		
ENTER	-		

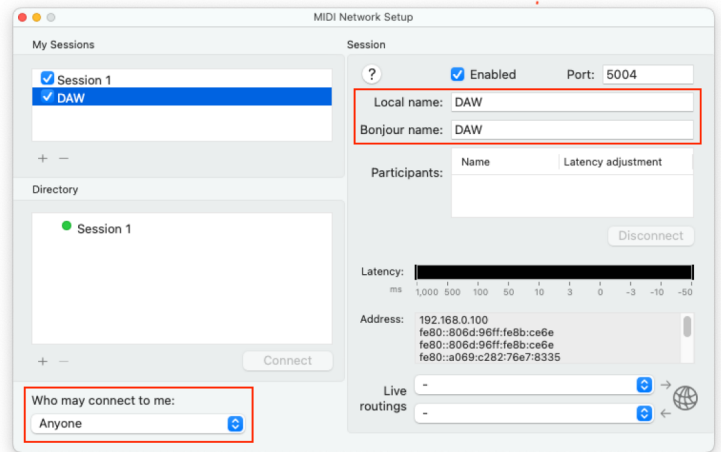
## ZONE J -TRANSPORT

Name	Modifiers	Function	Notes
MARKER	-	Enable Marker mode	
NUDGE	-		
CYCLE	-	Activate/deactivate Cycle mode	
DROP	-	Activate/deactivate Autopunch mode	
REPLACE	-	Activate/deactivate Replace mode	
CLICK	-	Activate/deactivate metronome click	
SOLO	-	Activate/deactivate Solo Lock function	
REWIND	-	Shuttle rewind	
F.FWD	-	Shuttle forward	
STOP	-	Stop	
PLAY	-	Play	
RECORD	-	Record	
◀ BANK ▶	-	Shift fader bank LEFT/RIGHT by number of channel strips	
◀ CHANNEL ▶	-	Shift fader bank LEFT/RIGHT by one channel	
ARROWS	-	Cursor Keys navigate the arrangement (depending on current window focus).	
ZOOM	-	Enable/disable Zoom mode	
JOG WHEEL	-	Jumps to the nearest bar in the Arrangement (no scrub support).	
SCRUB	-	Not supported	

# Setup

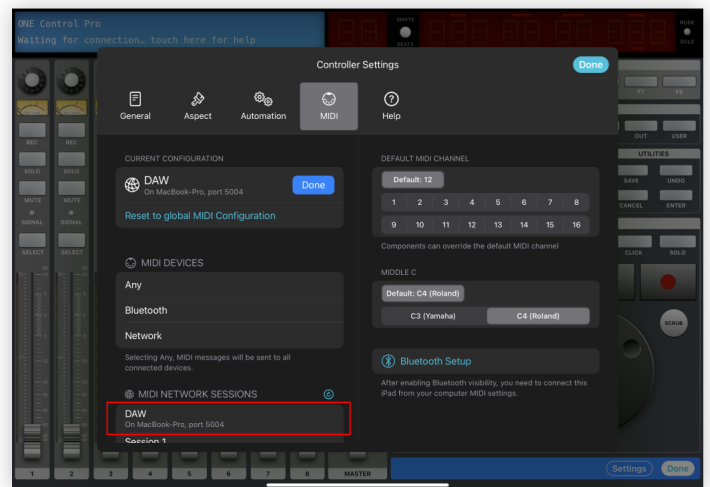
## Create a dedicated MIDI Network Session

1. On your Mac open Audio MIDI Setup app
2. Open MIDI Network Setup window from MIDI Studio Menu
3. Create a new Session and call it "DAW"  
(Fill in both the Local Name and Bonjour Name)
4. Double check that the newly created session is Enabled (Checkbox ticked)
5. Double check that "Who may connect to me" is set to Anyone



## Configure your controller

1. On ONE Control add a new Waveform controller
2. Inside the controller tap Edit
3. Tap Settings
4. Select the MIDI Setup panel
5. Tap Edit to configure your MIDI connection
6. In the MIDI Network Sessions list, select DAW
7. Close the controller's settings dialog
8. Tap Done to exit controller's editing Mode



## Configure Waveform

1. Open Waveform.
2. Go to the setting tab, MIDI devices page.
3. Enable MIDI inputs and Outputs for Session 1 / DAW.
4. Assign Input and Output Ports to Mackie
5. Close settings.

