



Cheat Sheet



ZONE A - MAIN LCD

Name	Modifiers	Function	Notes
DISPLAY	-	Main Liquid Crystal Display (LCD)	The main LCD is divided into eight columns, each with two lines of text. Each column displays information for the channel strip controls directly below it. In general, the upper row of each column displays the abbreviated track (or channel) name, and the lower row displays the abbreviated parameter name and its value.

ZONE B - CHANNEL STRIP (1-8)

Name	Modifiers	Function	Notes
V-Pot	-	Pans the track	On a stereo track, this works like simple stereo pan mode, and pans both left and right channels so the audio result matches the pan knob on the control surface
VU-Meter	-	Shows the level of the channel output (in dB)	
REC	-	Record arms an audio or instrument track. On a bus or on the main track, this spills the bus or main track	
MUTE	-	Mutes the track	
SOLO	-	Solos the track	
SIGNAL	-	Shows the signal activity of the channel output	
SELECT	-	Select	Selects the track on the control surface and in LUNA. If you have a focus module, the selected track appears on that module. If you select multiple tracks, the last-selected track appears on the focus module
FADER	-	Controls the volume level of the track	

ZONE C - MASTER Snapshot

Name	Modifiers	Function	Notes
DISPLAY	-	Assignment display	The Assignment display (also referred to as the mode display), to the right of the main LCD, shows a two-digit abbreviation for the current assignment state.
TRACK	-	View Channel Name and Pan Readout	Once the parameter is shown in the display, you can adjust its value by moving the corresponding V-Pot. When you move the V-Pot, the display will switch to show the parameter values instead of the parameter names.
PAN		Currently unassigned	
EQ		Currently unassigned	
SEND	-	Switches the V-Pot to control the levels of all available Send controls for the currently selected track.	If more than eight sends are available, you can navigate through them using the previous and next buttons.
CUE	-	Switches the V-Pot to control the levels of all available Cue controls for the currently selected track.	If more than eight sends are available, you can navigate through them using the previous and next buttons.
INSTR.		Currently unassigned	
NAME/VAL		Currently unassigned	
GLOBAL		Currently unassigned	
FLIP	-	Switch between Faders and V-Pots	When flip mode is enabled (as shown by the illuminated LED above the button), the functionality of the V-Pots and faders is switched. This is the case in all available assignment modes.
FADER		Adjust Master volume	

ZONE D - TIMECODE

Name	Modifiers	Function	Notes
SMPTE/BEATS	-	Switch between SMPTE and beat format in clock display	
DISPLAY	-	Time display	The Time display, to the right of the Assignment display, shows the current playhead position, either in musical time divisions (BEATS) or in SMPTE timecode format (SMPTE). A small LED to the left of the display indicates the current display format. <ul style="list-style-type: none"> When the format is set to Beats, the four segments of the Time display show the current playhead position as bars, beats, beat subdivisions, and ticks. When the format is set to SMPTE, the four segments of the Time display show the current playhead position as hours, minutes, seconds, and frames.
RUDE SOLO	-		

ZONE E - FUNCTIONS

Name	Modifiers	Function	Notes
T.LINE/MIXER	-	Toggles between timeline and mixer views	
SPILL	-	Spills the main bus	
F3		Currently unassigned	
F4		Currently unassigned	
F5		Currently unassigned	
F6		Currently unassigned	
F7		Currently unassigned	
F8		Currently unassigned	

ZONE F - GLOBAL VIEW

Name	Modifiers	Function	Notes
MIDI		Currently unassigned	
INPUTS		Currently unassigned	
AUDIO		Currently unassigned	
INSTR.		Currently unassigned	
AUX		Currently unassigned	
BUS		Currently unassigned	
OUT		Currently unassigned	
USER		Currently unassigned	

ZONE G - MODIFIERS

Name	Modifiers	Function	Notes
SHIFT	-	Switch to second function	
OPTION	-	Apply function to all channel strips or set parameter to minimum, default, or maximum value	
CONTROL	-	Disable Group functions while held down	
CMD/ALT	-	Enable Fine mode; shift parameter page by one parameter instead of page	

ZONE H - AUTOMATION

Name	Modifiers	Function	Notes
READ/OFF	-	Toggles between automation Read and automation Off mode	
WRITE		Currently unassigned	
TRIM	-	Toggles Trim automation mode while Read, Latch, or Touch are enabled	
TOUCH	-	Toggles automation Touch mode	
LATCH	-	Toggles automation Latch mode	
GROUP		Currently unassigned	

ZONE I - UTILITIES

Name	Modifiers	Function	Notes
SAVE		Currently unassigned	
UNDO	-	Undo last operation	
CANCEL		Currently unassigned	
ENTER		Currently unassigned	

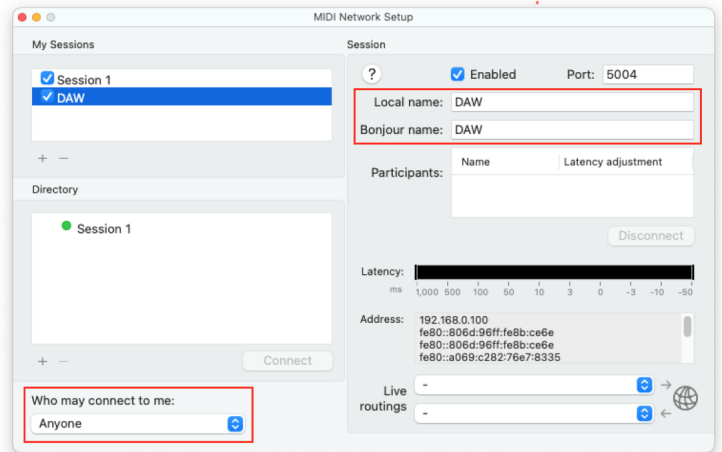
ZONE J -TRANSPORT

Name	Modifiers	Function	Notes
MARKER	-	Place a Marker	Press the Marker key on your control surface. This opens the marker browser, and you can optionally type a name for the marker and choose a color, then click Apply to add the marker
NUDGE		Currently unassigned	
CYCLE	-		
DROP		Currently unassigned	
REPLACE		Currently unassigned	
CLICK	-		
SOLO	-		
REWIND	-	Return to start	
F.FWD	-	Go to end	
STOP	-	Stop	
PLAY	-	Play/Pause	
RECORD	-	Record arm (Global)	
◀ BANK ▶	-	Shift one bank of faders left or right	
◀ CHANNEL ▶	-	Shift one channel left or right	
CURSOR ← →	-	Move to the next or previous marker	In Zoom mode: • Expand or reduce timeline horizontally
CURSOR ↑ ↓	-	Move the track selection one track to the left or right	In Zoom mode: • Increase or reduce track height
ZOOM	-	Enable/Disable Zoom mode	
JOG WHEEL	-		
SCRUB	-		

Setup

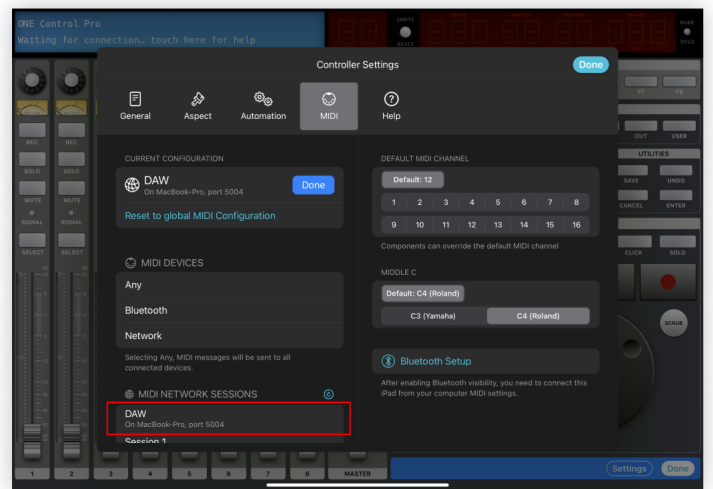
Create a dedicated MIDI Network Session

1. On your Mac open Audio MIDI Setup app
2. Open MIDI Network Setup window from MIDI Studio Menu
3. Create a new Session and call it "DAW"
(Fill in both the Local Name and Bonjour Name)
4. Double check that the newly created session is Enabled (Checkbox ticked)
5. Double check that "Who may connect to me" is set to Anyone



Configure your controller

1. On ONE Control add a new LUNA controller
2. Inside the controller tap Edit
3. Tap Settings
4. Select the MIDI Setup panel
5. Tap Edit to configure your MIDI connection
6. In the MIDI Network Sessions list, select DAW
7. Close the controller's settings dialog
8. Tap Done to exit controller's editing Mode



Configure LUNA

1. Open LUNA
2. Open the LUNA Sidebar and click, on Settings
3. Click Controllers
4. In one of the MIDI Control Surfaces rows, click under Input Device and select Network DAW
5. In the same MIDI Control Surface row, click under Output Device and select Network DAW
6. Select the box under the 'ON' column to enable the controller
7. Finally, Select 'Focus Module' or 'Extender' from the last two columns, depending on the type of controller you have created in the app

